



North Brookfield Hazard Mitigation Plan Update

[Last Revised – September 4, 2019]



Tucker Road Seasonal closure due to Beaver Dam Flooding, February 2019

Adopted by the Board of Selectmen September 3, 2019

Prepared by the **Central Massachusetts Regional Planning Commission**

1 Mercantile Street, Suite 520

Worcester, MA 01608

www.cmrpc.org

&

Local Hazard Mitigation Team

Town of North Brookfield, Massachusetts

Acknowledgements

The North Brookfield Board of Selectmen extends its thanks to participants in the Local Hazard Mitigation Team:

Anne Adams, Emergency Management
Mark Smith, Chief of Police
John Tripp, Board of Selectmen
Joseph Holway, Chief of Fire
Jason Benoit, Highway Department Superintendent
Sheila Orsi, Finance Committee/Downtown Development Committee

The Board likewise offers thanks to the Massachusetts Emergency Management Agency (MEMA) for guidance and feedback regarding this plan.

In addition, thanks are extended to the staff of the Central Massachusetts Regional Planning Commission for process facilitation and preparation of this document.

Central Massachusetts Regional Planning Commission

Peter Peloquin, Assistant Planner
Andrew Loew, Principal Planner
Trish Settles, Regional Collaboration & Community Planning Manager
Matthew Franz, GIS Analyst



TOWN OF NORTH BROOKFIELD
MASSACHUSETTS 01535

OFFICE OF THE BOARD OF SELECTMEN

Town Offices
215 North Main Street
Telephone 508.867.0200
Fax 508.867.0249
selectmen@northbrookfield.net

CERTIFICATE OF ADOPTION

Town of North Brookfield, MASSACHUSETTS

BOARD OF SELECTMEN

A RESOLUTION ADOPTING THE NATURAL HAZARD MITIGATION PLAN

WHEREAS, the Town of North Brookfield established a Committee to prepare the Hazard Mitigation plan; and

WHEREAS, the Town of North Brookfield participated in the development of the NATURAL HAZARD MITIGATION PLAN;

and WHEREAS, the NATURAL HAZARD MITIGATION PLAN contains several potential future projects to mitigate potential impacts from natural hazards in the Town of North Brookfield and

WHEREAS, a duly-noticed public meeting was held by the BOARD OF SELECTMEN on May 14, 2019 for the public and municipality to review prior to consideration of this resolution; and

WHEREAS, the Town of North Brookfield authorizes responsible departments and/or agencies to execute their responsibilities demonstrated in the plan, and

NOW, THEREFORE BE IT RESOLVED that the Town of North Brookfield BOARD OF SELECTMEN, formally approves and adopts the NATURAL HAZARD MITIGATION PLAN, in accordance with M.G.L. c. 40.

ADOPTED AND SIGNED this 3rd day of September, 2019


Dale Kiley

Jason Petraitis


John Tripp

Contents

1.0 INTRODUCTION	3
1.1 Disaster Mitigation Plan.....	3
1.2 Plan Purpose.....	3
2.0 PLANNING PROCESS.....	3
3.0 REGIONAL AND COMMUNITY PROFILE	6
4.0 NATURAL HAZARD IDENTIFICATION AND ANALYSIS	7
4.1 Overview of Hazards and Impacts	8
4.2 Dam Failure.....	11
4.3 Drought.....	15
4.4 Earthquakes	19
4.5 Extreme Temperatures	23
4.6 Flooding	26
4.7 Hurricanes	29
4.8 Severe Snowstorms / Ice Storms / Nor'easters	34
4.9 Severe Thunderstorms / Wind / Tornado	38
4.10 Wildfires / Brush Fires	43
4.11 Other Hazards.....	48
4.12 Impacts of Climate Change on Hazards	51
5.0 CRITICAL FACILITIES & VULNERABLE POPULATIONS.....	54
5.1 Critical Facilities within North Brookfield	54
Category 1 – Emergency Response Facilities	55
Category 2 – Non-Emergency Response Facilities.....	55
Category 3 – Dams	56
Category 4 – Facilities/Populations to Protect	56
6.0 EXISTING PROTECTION	58
6.1 Existing Protection Matrix	60
7.0 MITIGATION STRATEGY.....	64
7.1 Impact.....	64
7.2 Priority.....	64
7.3 Estimated Cost.....	65

8. PLAN ADOPTION, IMPLEMENTATION, AND MAINTENANCE	76
8.1 Plan Adoption.....	76
8.2 Plan Implementation	76
8.3 Plan Monitoring and Evaluation	77
8.4 Potential Federal and State Funding Sources	79
APPENDICES	88
A. Maps.....	88
B. Public Survey Results	88
C. Planning Team & Public Meetings	88
D. Glossary	88
E. 2012/2018 Priorities Comparison	88

1.0 INTRODUCTION

1.1 Disaster Mitigation Plan

Congress enacted the Disaster Mitigation Act of 2000 (DMA 2000) on October 10, 2000. Also known as the Stafford Act Amendments, the bill was signed into law by President Clinton on October 30, 2000, creating Public Law 106-390. The law established a national program for pre-disaster mitigation and streamlined the federal administration of disaster relief. Specific rules on the implementation of DMA 2000 were published in the Federal Register in February 2002 and required that all communities must have a Hazard Mitigation Plan in place in order to qualify for future federal disaster mitigation grants following a Presidential disaster declaration each plan must be updated every five years to remain valid. The Hazard Mitigation Plan emphasizes measures that can be taken to reduce or prevent future disaster damages caused by natural hazards. In the context of natural hazard planning, hazard mitigation refers to any action that permanently reduces or eliminates long-term risks to human life and property.

1.2 Plan Purpose

New England weather is renowned for its mercurial and dramatic nature. Late summer hurricanes, major winter blizzards, and summer droughts are all part of climactic atmosphere in Central Massachusetts. These occur frequently enough to be familiar scenes to residents of North Brookfield. The intersection of these natural hazards with the built environment can transition these routine events into classified natural disasters. Since many cities and towns historically developed along waterways as a corridor for transportation and power, much development is present in riverine floodplains. The historical development pattern of Central Massachusetts makes the likelihood of a devastating impact of a natural disaster more likely.

This plan identifies the natural hazards facing the Town of North Brookfield, assesses the vulnerabilities of the area's critical facilities, infrastructure, residents, and businesses, and presents recommendations on how to mitigate the negative effects of typical natural hazards.

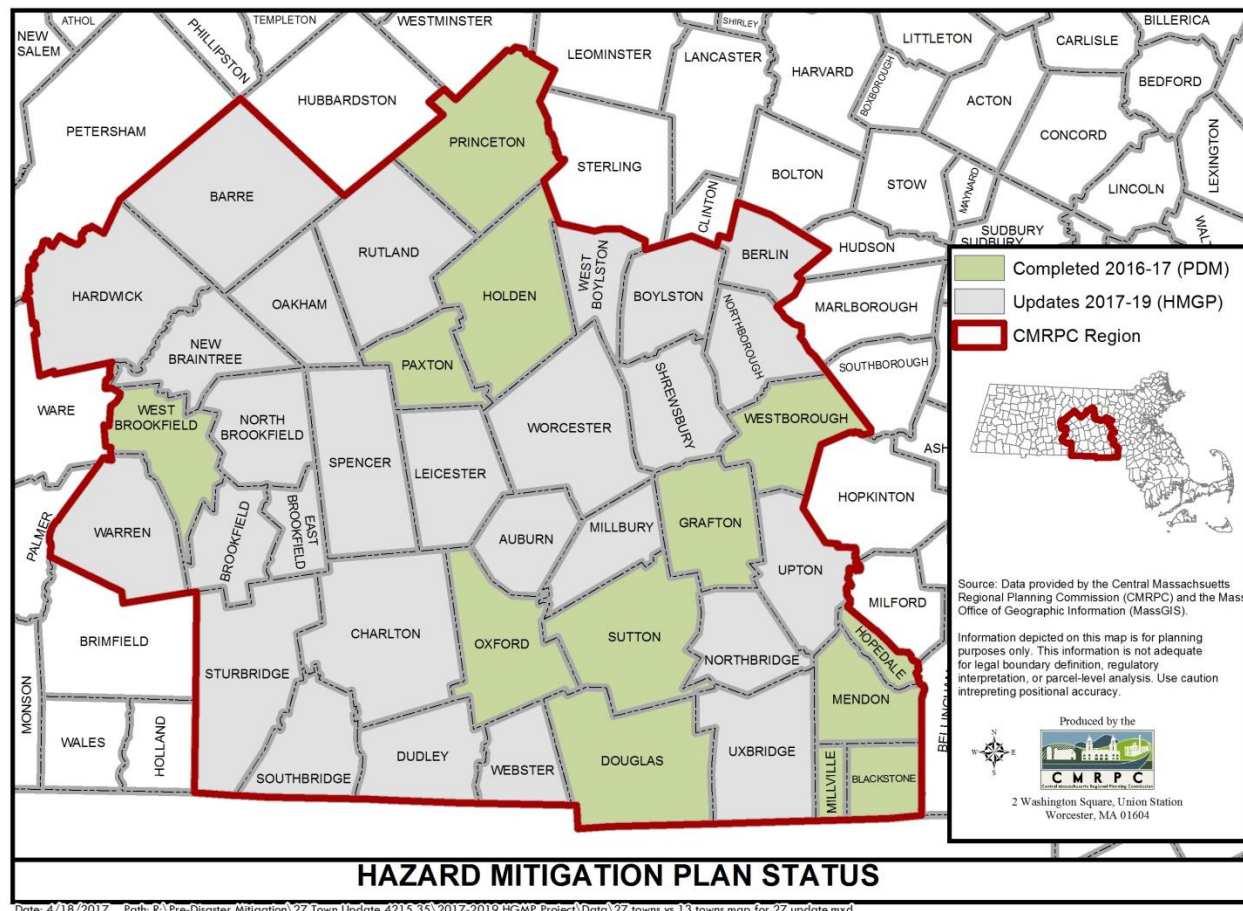
This effort has drawn from the knowledge of local municipal officials and residents, and the recommendations presented are intended to be realistic and effective steps for mitigating natural hazards. Implementation of these actions will translate into savings for the community, fewer lives lost, less property destroyed, and less disruption to essential services.

2.0 PLANNING PROCESS

This Plan is funded by the Hazard Mitigation Grant Program (HMGP) grant to CMRPC from the Federal Emergency Management Agency (FEMA) through the Massachusetts Emergency Management Agency (MEMA). Twenty-seven Central Massachusetts communities are

participating in this effort, which involves community-specific updates to a regional plan adopted in March of 2013. Aside from North Brookfield, the twenty-six other communities are Auburn, Barre, Berlin, Boylston, Brookfield, Charlton, Dudley, East Brookfield, Hardwick, Leicester, Millbury, New Braintree, North Brookfield, Northborough, Northbridge, Oakham, Rutland, Shrewsbury, Southbridge, Spencer, Sturbridge, Upton, Uxbridge, Warren, Webster, West Boylston and Worcester.

Figure 1



The planning process in each community was composed of two distinct but related phases – data collection and technical review, and public input and planning. Identification of natural hazards impacting participating communities was accomplished through review of available information from various sources. These included federal and state reports and datasets, existing plans, and in some cases engineering documents. An assessment of risks and vulnerabilities was performed primarily using geographic information systems (GIS) to identify the infrastructure (critical facilities, public buildings, roads, homes, businesses, etc.) at the highest risk for being damaged by hazards, particularly flooding. Local knowledge as imparted by town officials, staff, emergency management volunteers and others was a critical element of this phase.

The second phase of the process was focused on outreach, public participation and input, and planning. This phase was critical to ensuring awareness of the planning process among a wide range of local officials, coordinating plan elements with other sectors of the community, and providing opportunities for public comment and input from a representative base of residents and other stakeholders in each community. Through this engagement, CMRPC was better able to gauge community priorities for mitigation and to understand local resources and existing policies and procedures. With this information in hand, the planning team was able to develop an informed and community-specific list of mitigation strategies for each participating town.

In North Brookfield, a planning team of local staff and volunteers led by Anne Adams, North Brookfield Emergency Management met Three times on the following dates to discuss hazard areas, critical infrastructure and other assets, and plan priorities and strategies: December 17, 2018, January 14, 2019 and January 28, 2018. Participants included Anne Adams, EMA, Mark Smith, Chief of Police, John Tripp, Board of Selectmen, Joseph Holway, Chief of Fire, Jason Benoit, Highway Department Superintendent, Sheila Orsi, Finance Committee/Downtown Development Committee and others, (see sign-in sheets in appendix C for all participants). Between meetings and during development of the draft and final plans, information and comments were shared among the local team and CMRPC. Additionally, in early 2019, a public survey to gauge residents' concerns about (and experiences with) hazards was distributed on the town's website. More than 50 residents participated, offering opinions on hazards and vulnerabilities, preferred means of emergency communication, and priorities and suggestions for future mitigation action. Survey responses were discussed by the planning team at its May 14, 2019 meeting and informed development and prioritization of mitigation strategies.

As planning activities progressed, a public presentation was made by CMRPC at the May 14, 2019 meeting of the Board of Selectmen to provide a summary of key aspects of the draft Plan report then being finalized. The opportunity for public comment was emphasized. Materials and notes from the presentation and subsequent public discussion are included in the appendix. A full draft Plan was provided to the town for distribution and made available online at CMRPC's website for public comment for two weeks starting on May 16, 2019 through May 31, 2019. In addition, the final draft Plan was distributed to officials in all neighboring communities for review and input regarding shared hazards.

The final draft Plan was submitted to MEMA for review on June 7, 2019 and was then relayed to FEMA for federal review. After receipt of FEMA's revisions on August 16, 2019, a presentation of the final plan was made by CMRPC at the September 3, 2019 meeting of the Board of Selectmen. At the meeting, the plan was formally adopted by vote of the Selectmen.

The North Brookfield Planning Board is the primary town agency responsible for regulating development in the town. Feedback to the Planning Board was ensured through the participation

of the local hazard planning team. In addition, CMRPC, the State-designated regional planning authority for North Brookfield, works with all agencies that regulate development in its region, including the municipal entities listed above and state agencies, such as Department of Conservation and Recreation and MassDOT. This regular involvement ensured that during the development of the North Brookfield Hazard Mitigation Plan, the operational policies and any mitigation strategies or identified hazards from these entities were incorporated.

See Appendix C for additional documentation of local stakeholder and public participation in the planning process.

3.0 REGIONAL AND COMMUNITY PROFILE

The Central Massachusetts Regional Planning Commission (CMRPC) region occupies roughly 1,000 square miles in the southern two-thirds of Worcester County, Massachusetts. The area surrounds the City of Worcester, which is the second-largest town in Massachusetts and New England, with a population of 183,382 as of the 2015 American Community Survey (five-year estimate). Nearly 563,000 people live in the CMRPC Region.

The CMRPC area is framed on the west by the Central Massachusetts uplands, on the south by Rhode Island and Connecticut, on the east by the Boston metropolitan area, and on the north by the Montachusett region in northern Worcester County. The forty-community region has been divided for planning purposes into six sub-regions, determined by shared characteristics and roadway corridors. North Brookfield is located in the West sub-region consisting of nine towns lying within the Chicopee and French (Shetucket) River valleys, including: Brookfield, East Brookfield, Hardwick, Leicester, New Braintree, North Brookfield, Spencer, Warren and West Brookfield.

Massachusetts has a humid continental climate, with maritime influences increasing from northwest to southeast. The North Brookfield area, as represented by National Weather Service data collected from 2000 through 2016 in nearby Worcester, sees monthly mean temperatures ranging from 24.4 degrees in January to 71 in July. Precipitation is relatively high at 49.15 inches annually, including 78 inches of snowfall. With a temperate climate and a location some 40 miles from the Atlantic coast, North Brookfield and its neighboring communities are subject to a variety of severe weather, including hurricanes, nor'easters, thunderstorms, and blizzards. All of these are discussed more fully in Chapter 4.

The Town of North Brookfield, Massachusetts was incorporated in 1812. North Brookfield is located on Route 67, 19 miles west of the City of Worcester and is largely a bedroom community. All of North Brookfield lies within the Chicopee River Basin. North Brookfield is bordered by West Brookfield on the west, Spencer on the east, Brookfield and East Brookfield on the south,

and New Braintree on the north.

North Brookfield has a total area of 21.47 square miles and a population of 4,734 (2015 American Community Survey). North Brookfield is a demographically stable community, with population growth slowing. According to the Central Massachusetts Regional Planning Commission's (CMRPC) Long Range Transportation Plan, Mobility 2040, the Town of North Brookfield is expected to experience minimal population growth, compared to the region, over the next 25 years. http://cmrpc.org/sites/default/files/Documents/Trans/Study_and_Plan/2016%20RTP/Final%20PDF/5.%20RTP%20Chapter%20I%20-%20Introduction%20and%20Background.pdf

The number of residents has grown from 4,708 in the 1990 US Census to 4,683 in 2000 to the currently (2015) estimated 4,734. North Brookfield is a largely white community, with some 97.6% of residents identifying within that group. Black/African American are the largest minority group, at 1%. The age breakdown is broadly similar to Massachusetts state splits, with children under 19 (24.9%) and seniors 65 or over (14.2%) close to the state rates of 24% and 14.7% respectively. Median age is 43.4, somewhat above the state median of 39.3. At \$68,232, median household annual income is about the state (\$68,563) and Worcester County (\$65,313) medians. Poverty is low at 5.8%, or about half the state rate (11.6%) and county rates (11.8%). Housing costs are relatively low, with a median owner-occupied home valued at \$231,600, compared to \$333,100 for Massachusetts and \$252,600 for the county. More than 66% of occupied homes are detached or semi-detached single family houses; the remainder is multi-unit structures. At 17.4%, vacancies are well above the state (9.8%) and county (8.4%) numbers. Most homes are relatively older, with only 46.9% built before 1940, compared to 34% for Massachusetts and 32.5% for Worcester County.

4.0 NATURAL HAZARD IDENTIFICATION AND ANALYSIS

The following section includes a summary of disasters that have affected or could affect North Brookfield. Historical research, discussions with local officials and emergency management personnel, available hazard mapping and other weather-related databases were used to develop this list. The most significant identified hazards are the following:

- Dam Failure
- Drought
- Earthquakes
- Extreme Temperatures
- Flooding
- Hurricanes
- Severe Snowstorms/Ice Storms/Nor'easter
- Severe Thunderstorms/Tornadoes/Wind

- Wildfire/Brushfire
- Other hazards

4.1 Overview of Hazards and Impacts

This section examines the hazards listed in the 2018 Massachusetts State Hazard Mitigation Plan with the exception of coastal zone hazards that do not apply to landlocked North Brookfield. The analysis is organized into the following sections: Hazard Description, Location, Extent, Previous Occurrences, Probability of Future Events, Impact, and Vulnerability. A description of each of these analysis categories is provided below.

Hazard Description

The natural hazards identified for North Brookfield are: Dam Failure, Drought, Earthquakes, Extreme Temperatures, Flooding, Hurricanes, Severe Snowstorms / Ice Storms / Nor'easters, Severe Thunderstorms / Tornadoes / Wind, Wildfire/Brushfire. Many of these hazards result in similar impacts to a community. For example, hurricanes, tornadoes, and severe snowstorms may cause wind-related damage.

Location

Location refers to the geographic areas within the planning area that are affected by the hazard. Some hazards affect the entire planning area universally, while others apply to a specific portion, such as a floodplain or area that is susceptible to wild fires. Classifications are based on the area that would potentially be affected by the hazard, on the following scale:

Table 1

Percentage of Town Impacted by Natural Hazard	
Land Area Affected by Occurrence	Percentage of Town Impacted
Large	More than 50% of the town affected
Medium	10 to 50% of the town affected
Small	Less than 10% of the town affected

Extent

Extent describes the strength or magnitude of a hazard. Where appropriate, extent is described using an established scientific scale or measurement system. Other descriptions of extent include water depth, wind speed, and duration.

Previous Occurrences

Previous hazard events that have occurred are described. Depending on the nature of the hazard, events listed may have occurred on a local, state-wide, or regional level.

Probability of Future Events

The likelihood of a future event for each natural hazard was classified according to the following scale:

Table 2

Frequency of Occurrence and Annual Probability of Given Natural Hazard	
Frequency of Occurrence	Probability of Future Events
Very High	70-100% probability in the next year
High	40-70% probability in the next year
Moderate	10-40% probability in the next year
Low	1-10% probability in the next year
Very Low	Less than 1% probability in the next year

Impact

Impact refers to the effect that a hazard may have on the people and property in the community, based on the assessment of extent described above. Impacts are classified according to the following scale:

Table 3

Impacts, Magnitude of Multiple Impacts of Given Natural Hazard	
Impacts	Magnitude of Multiple Impacts
Catastrophic	Multiple deaths and injuries possible. More than 50% of property in affected area damaged or destroyed. Complete shutdown of facilities for 30 days or more.
Critical	Multiple injuries possible. More than 25% of property in affected area damaged or destroyed. Complete shutdown of facilities for more than 1 week.
Limited	Minor injuries only. More than 10% of property in affected area damaged or destroyed. Complete shutdown of facilities for more than 1 day.
Minor	Very few injuries, if any. Only minor property damage and minimal disruption on quality of life. Temporary shutdown of facilities.

Vulnerability

Based on the above metrics, a hazard index rating was determined for each hazard. The hazard index ratings are based on a scale of 1 through 5 as follows:

- 1 – Highest risk
- 2 – High risk
- 3 – Medium risk
- 4 – Low risk
- 5 – Lowest risk

The ranking is qualitative and is based, in part, on local knowledge of past experiences with each type of hazard. The size and impacts of a natural hazard can be unpredictable. However; many of the mitigation strategies currently in place and many of those proposed for implementation can be applied to the expected natural hazards, regardless of their unpredictability.

Table 4

Hazard Identification and Analysis for the Town of North Brookfield				
Type of Hazard	Location of Occurrence	Probability of Future Events	Impact	Hazard Risk Index Rating
Dam Failure	Small	Very Low	Limited	4
Drought	Large	Very Low	Minor	4
Earthquakes	Large	Very Low	Minor	5
Extreme Temperatures	Large	Moderate	Limited	4
Flooding	Medium	Low	Minor	3
Hurricanes	Large	Low	Limited	3
Severe Snowstorms / Ice Storms/ Nor'easter	Large	Very High	Limited	2
Severe Thunderstorms / Tornadoes / Wind	Small	Moderate	Minor	2
Wildfire / Brushfire	Medium	Moderate	Minor	4

Source: based on Massachusetts State Hazard Mitigation Plan, 2013; modified to reflect conditions in North Brookfield

4.2 Dam Failure

Hazard Description

Dams and their associated impoundments provide many benefits to a community, such as water supply, recreation, hydroelectric power generation, and flood control. However, they also pose a potential risk to lives and property. Dam failure is not a common occurrence, but dams do represent a potentially disastrous hazard. When a dam fails, the potential energy of the stored water behind the dam is released rapidly. Most dam failures occur when extreme floodwaters overtop dams, causing rapid deterioration through erosion of upper dam surfaces. Often dam breeches lead to catastrophic consequences as the water rushes in a torrent downstream flooding an area engineers refer to as an “inundation area.” The number of casualties and the amount of property damage will depend upon the timing of the warning provided to downstream residents,

the number of people living or working in the inundation area, and the number of structures in the inundation area.

Many dams in Massachusetts were built during the 19th century without the benefit of modern engineering design and construction oversight. Dams of this age can fail because of structural problems due to age and/or lack of proper maintenance, as well as from structural damage caused by an earthquake or flooding.

The Massachusetts Department of Conservation and Recreation Office of Dam Safety is the agency responsible for regulating dams in the state (M.G.L. Chapter 253, Section 44 and the implementing regulations 302 CMR 10.00). To be regulated, these dams must be in excess of 6 feet in height (regardless of storage capacity) and have more than 15 acre-feet of storage capacity (regardless of height). Dam safety regulations enacted in 2005 transferred significant responsibilities for dams from the Commonwealth of Massachusetts to dam owners, including the responsibility to conduct dam inspections.

Location

According to the Massachusetts Office of Dam Safety, there are 7 dams in North Brookfield, of which 5 are Significant Hazard. The names and hazard levels of dam structures within North Brookfield are:

Table 5

National ID	Dam Name	Owner Type	Hazard Potential	Notes
MA01931	Bliss Pond Dam	Private	N/A	
MA00948	Doane Pond Dam	Town of North Brookfield	Significant Hazard	
MA00950	Horse Pond Dam	DCR - Dept. of Conservation & Recreation	Significant Hazard	
MA00947	Horse Pond Dam	Town of North Brookfield	Significant Hazard	In poor condition. On State list of 100 critical dams
MA00951	Kittredge Dam	DCR - Dept. of Conservation & Recreation	Significant Hazard	
MA01932	Man-O-Name #20 Dam	Private Association or other non-profit	Significant Hazard	
MA03245	Old Ice Pond Dam	Private	N/A	

Note: this list does NOT include Town-owned dams outside North Brookfield

North Brookfield Dam Locations

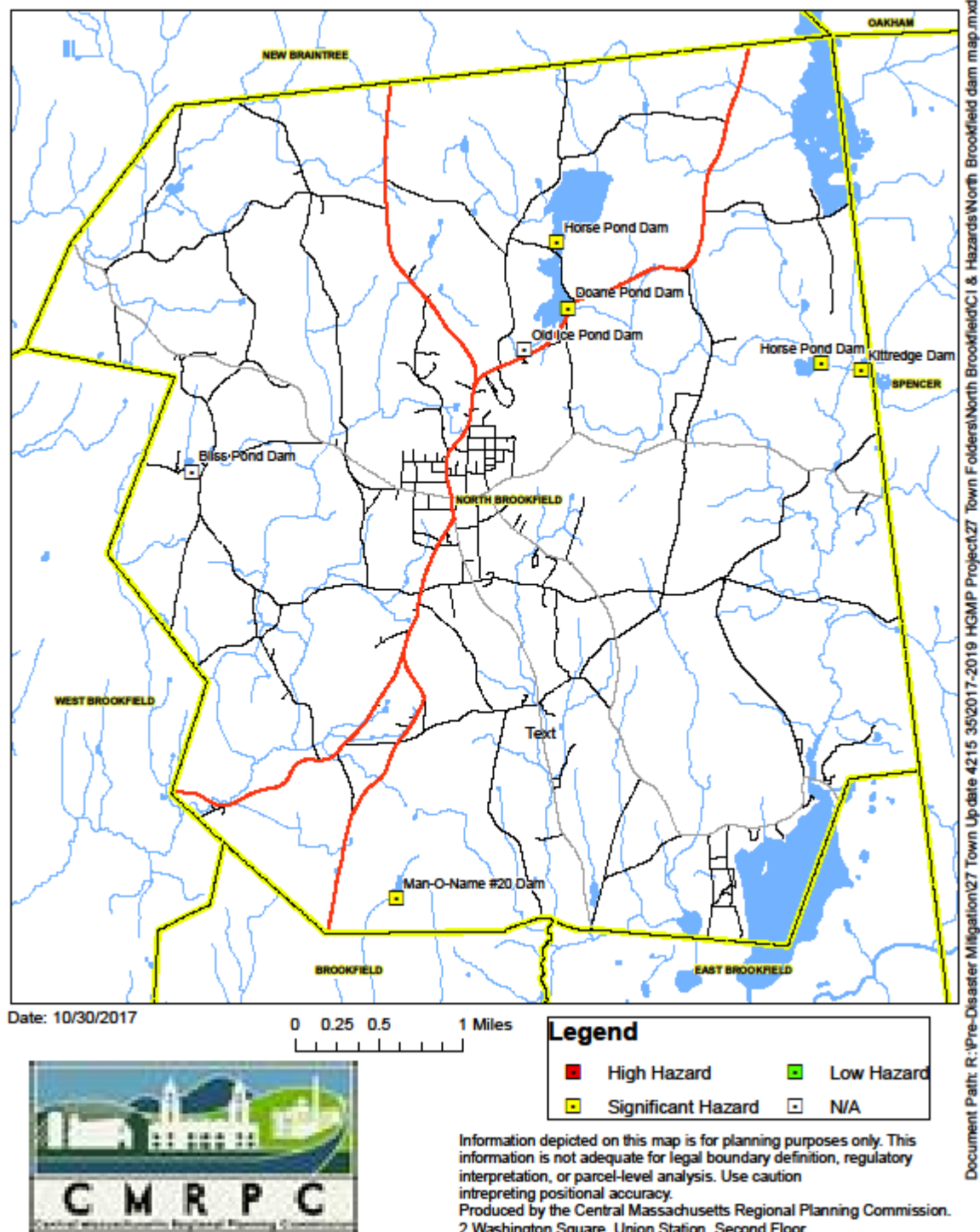


Figure 2 – North Brookfield Dam Locations

Inundation areas for these dams cover less than 10% of the town, or a “small” portion of its area.

Extent

Often dam or levee breaches lead to catastrophic consequences as the water ultimately rushes in a torrent downstream flooding an area engineers refer to as an “inundation area.” The number of casualties and the amount of property damage will depend upon the timing of the warning provided to downstream residents, the number of people living or working in the inundation area, and the number of structures in the inundation area.

Dams in Massachusetts are assessed according to their risk to life and property. The state has three hazard classifications for dams:

- *High Hazard:* Dams located where failure or improper operation will likely cause loss of life and serious damage to homes, industrial or commercial facilities, important public utilities, main highways, or railroads.
- *Significant Hazard:* Dams located where failure or improper operation may cause loss of life and damage to homes, industrial or commercial facilities, secondary highways or railroads or cause interruption of use or service of relatively important facilities.
- *Low Hazard:* Dams located where failure or improper operation may cause minimal property damage to others. Loss of life is not expected.

Previous Occurrences

In September 1938, the Great Hurricane of 1938 produced high winds and heavy rains throughout Worcester County and the Eastern seaboard. The hurricane was said to be the most powerful hurricane recorded at that time. Heavy amounts of rain fall and extremely high winds caused the Doane Pond Dam to breach. The dam breach resulted in the loss of one life

Probability of Future Events

While North Brookfield has a fairly high number of High and Significant Hazard dams, there are no reported previous dam failure events in the 150-plus years that dams have been present. Probability for future failure events is therefore “very low” with less than 1 percent chance of a dam bursting in any given year. However, dams labeled “unsafe” by the state should be repaired to prevent future events.

Impact

The town faces a “limited” impact from failure of dams with, with 10 to 25 percent of the affected area likely to see damage.

It is not possible to estimate the property loss impacts of dam failure quantitatively given the large number of variables involved in failure events. Qualitatively, losses from failure of an individual dam could be significant but would be geographically limited to portions of the dam's inundation zone.

Vulnerability

In accordance with the Massachusetts Hazard Mitigation Plan, a quantitative vulnerability analysis could not be completed to estimate potential losses from a dam failure event. Based on a mostly qualitative assessment, North Brookfield has a hazard index rating of “4 – limited” from dam failure.

4.3 Drought

Hazard Description

Drought is a normal, recurrent feature of climate. It occurs almost everywhere, although its features vary from region to region. In the most general sense, drought originates from a deficiency of precipitation over an extended period of time, resulting in a water shortage for some activity, group, or environmental sector. Reduced crop, rangeland, and forest productivity; increased fire hazard; reduced water levels; increased livestock and wildlife mortality rates; and damage to wildlife and fish habitat are a few examples of the direct impacts of drought. These impacts can have far-reaching effects throughout the region and even the country.

Location

Because of this hazard's regional nature, a drought would likely impact the entire community, meaning the location of occurrence is “large” or over 50 percent of the town.

Extent

The severity of a drought determines the scale of the event. Less than half of North Brookfield is served by the North Brookfield Water Department. The residents out-side of the service area rely on private wells. The U.S. Drought Monitor also records information on historical drought occurrence based on its categorization of drought on a D0-D4 scale as shown below.

Table 6

U.S. Drought Monitor		
Classification	Category	Description
D0	Abnormally Dry	Going into drought: short-term dryness slowing planting, growth of crops or pastures. Coming out of drought: some lingering water deficits; pastures or crops not fully recovered
D1	Moderate Drought	Some damage to crops, pastures; streams, reservoirs, or wells low, some water shortages developing or imminent; voluntary water-use restrictions requested
D2	Severe Drought	Crop or pasture losses likely; water shortages common; water restrictions imposed
D3	Extreme Drought	Major crop/pasture losses; widespread water shortages or restrictions
D4	Exceptional Drought	Exceptional and widespread crop/pasture losses; shortages of water in reservoirs, streams, and wells creating water emergencies

Source: US Drought Monitor, <http://droughtmonitor.unl.edu/>.

Previous Occurrences

In Massachusetts, seven major droughts have occurred statewide between 1930 and the recently-notable 2016 event, though the North Brookfield area has been spared the most severe impacts in each case according to USGS Water Supply Paper for Massachusetts #2375. These historic major droughts range in severity and in length, lasting from three to eight years. In many of these droughts, water-supply systems around the state were found to be inadequate. Water was piped into urban areas, and water-supply systems were modified to permit withdrawals at lower water levels. The following table displays peak drought severity since 2000, from the US Drought Monitor:

Table 7

Annual Drought Status in Worcester County, Mass.	
Year	Maximum Severity
2000	No drought
2001	D2 conditions in 7% of the county
2002	D2 conditions in 100% of the county
2003	No drought
2004	D0 conditions in 96% of the county
2005	D0 conditions in 100% of the county
2006	D0 conditions in 100% of the county

Annual Drought Status in Worcester County, Mass.	
Year	Maximum Severity
2007	D1 conditions in 87% of the county
2008	D0 conditions in 98% of the county
2009	D0 conditions in 76% of the county
2010	D1 conditions in 43% of the county
2011	No drought
2012	D2 conditions in 70% of the county
2013	D1 conditions in 91% of the county
2014	D1 conditions in 79% of the county
2015	D1 conditions in 100% of the county
2016	D3 conditions in 57% of the county
2017 (to Sept. 19)	D2 conditions in 77% of the county

Source: US Drought Monitor, 2017.

In North Brookfield, the last known drought event with substantial impacts occurred in 2016.

Probability of Future Events

In North Brookfield, as in the rest of the state, extreme and exceptional droughts occur at a “very low” probability (1 to 10 percent in the next year). Based on past events and current criteria outlined in the Massachusetts Drought Management Plan, it appears that central Massachusetts may be slightly more vulnerable than parts of eastern Massachusetts to severe drought conditions. However, many factors, such as water supply sources, population, economic factors (i.e., agriculture based economy), and infrastructure, may affect the severity and length of a drought event. When evaluating the region’s risk for drought on a national level, utilizing a measure called the Palmer Drought Severity Index from the National Drought Mitigation Center at the University of Nebraska, Massachusetts is historically in the lowest percentile for severity and risk of drought.

As with all communities in normally precipitation-rich Massachusetts, North Brookfield is unlikely to be adversely affected by anything other than a major, extended drought. While such a drought would require water saving measures to be implemented, foreseeable damage to structures or loss of life resulting from the hazard would likely be very limited, with modest increased risk of damaging forest or brush fires.

Palmer Drought Severity Index

1895–1995

Percent of time in severe and extreme drought

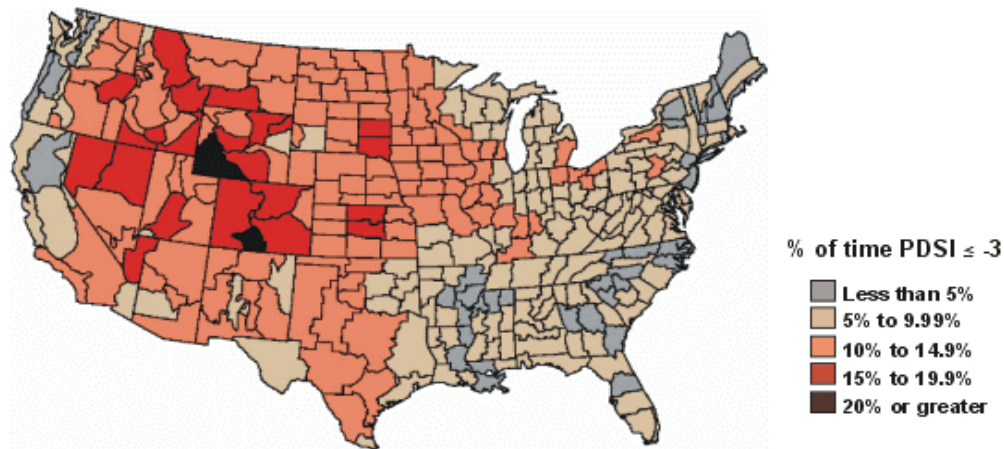


Figure 3

Impact

The impact of droughts is categorized by the U.S. Drought Monitor include:

- Slowing or loss of crops and pastures
- Water shortages or restrictions
- Minor to significant damage to crops, pastures;
- Low water levels in streams, reservoirs, or wells

Impacts in North Brookfield may vary among customers of the water system and private well users. So, while the impact of a drought can be assessed as “minor” overall, with very little damage to people or property likely to occur, impacts may be higher in parts of the town that are not located within the town’s water service area.

Agricultural impacts due to drought are generally not substantial in the area, and agriculture is a relatively insignificant industry in North Brookfield. On a county-wide scale, the extreme drought of 2016 caused crop failures on roughly 0.4% of all harvested cropland based on USDA loss claims and the Massachusetts Agricultural Census.

Vulnerability

Based on the above assessment, North Brookfield has a hazard index rating of “4 – low risk” from drought. Minimal or no loss of property, or damage to people or property is expected due to this hazard. Vulnerability is higher in areas outside the municipal water service area.

4.4 Earthquakes

Hazard Description

An earthquake is a sudden, rapid shaking of the ground that is caused by the breaking and shifting of rock beneath the Earth's surface. Earthquakes can occur suddenly, without warning, at any time of the year. Ground shaking from earthquakes can rupture gas mains and disrupt other utility service, damage buildings, bridges and roads, and trigger other hazardous events such as avalanches, flash floods (dam failure) and fires. Un-reinforced masonry buildings, buildings with foundations that rest on filled land or unconsolidated, unstable soil, and mobile homes not tied to their foundations are at risk during an earthquake.

Location

Because of the regional nature of the hazard, the entire Town of North Brookfield is susceptible to earthquakes. This makes the location of occurrence "large," or over 50 percent of the total area.

Extent

The magnitude of an earthquake is measured using the Richter Scale, which measures the energy of an earthquake by determining the size of the greatest vibrations recorded on the seismogram. On this scale, one step up in magnitude (from 5.0 to 6.0, for example) increases the energy more than 30 times.

Table 8

Richter Scale Magnitudes and Effects	
Magnitude	Effects
< 3.5	Generally, not felt, but recorded.
3.5 - 5.4	Often felt, but rarely causes damage.
5.4 - 6.0	At most slight damage to well-designed buildings. Can cause major damage to poorly constructed buildings over small regions.
6.1 - 6.9	Can be destructive in areas up to about 100 kilometers across where people live.
7.0 - 7.9	Major earthquake. Can cause serious damage over larger areas.
8 or >	Great earthquake. Can cause serious damage in areas several hundred kilometers across.

The intensity of an earthquake is measured using the Modified Mercalli Scale. This scale quantifies the effects of an earthquake on the Earth's surface, humans, objects of nature, and man-

made structures on a scale of I through XII, with I denoting a weak earthquake and XII denoting an earthquake that causes almost complete destruction.

Table 9

Modified Mercalli Intensity Scale for and Effects			
Scale	Intensity	Description of Effects	Corresponding Richter Scale Magnitude
I	Instrumental	Detected only on seismographs.	
II	Feeble	Some people feel it.	< 4.2
III	Slight	Felt by people resting; like a truck rumbling by.	
IV	Moderate	Felt by people walking.	
V	Slightly Strong	Sleepers awake; church bells ring.	< 4.8
VI	Strong	Trees sway; suspended objects swing, objects fall off shelves.	< 5.4
VII	Very Strong	Mild alarm; walls crack; plaster falls.	< 6.1
VIII	Destructive	Moving cars uncontrollable; masonry fractures, poorly constructed buildings damaged.	
IX	Ruinous	Some houses collapse; ground cracks; pipes break open.	< 6.9
X	Disastrous	Ground cracks profusely; many buildings destroyed; liquefaction and landslides widespread.	< 7.3
XI	Very Disastrous	Most buildings and bridges collapse; roads, railways, pipes and cables destroyed; general triggering of other hazards.	< 8.1
XII	Catastrophic	Total destruction; trees fall; ground rises and falls in waves.	> 8.1

Source: U.S. Federal Emergency Management Agency

Previous Occurrences

Although New England has not experienced a damaging earthquake since 1755, seismologists state that a serious earthquake occurrence is possible. There are five seismological faults in Massachusetts, but there is no discernible pattern of previous earthquakes along these fault lines. Earthquakes occur without warning and may be followed by aftershocks. Most older buildings and infrastructure were constructed without specific earthquake resistant design features.

The most recent notable (Magnitude or Intensity 4 or greater) earthquakes to affect Massachusetts since 1900 are shown in the table below:

Table 10

Notable Earthquakes in Massachusetts 1900 – 2016			
Location	Date	Magnitude	MMI
Nantucket, MA	October 25, 1965	4.7	5.0
Cape Ann, MA	January 7, 1925	4.0	5.0
Wareham, MA	April 25, 1924	4.0	5.0
Newbury, MA	June 10, 1951	4.0	5.0

Source: Northeast States Emergency Consortium website, <http://nsec.org/massachusetts-earthquakes/>

Additionally, a table showing historic incidences of earthquakes for the six New England states are shown in the table below:

Table 11

New England States Record of Historic Earthquakes		
State	Years of Record	Number of Earthquakes
Connecticut	1668 – 2016	115
Maine	1766 – 2016	454
Massachusetts	1668 – 2016	408
New Hampshire	1638 – 2016	320
Rhode Island	1776 – 2016	34
Vermont	1843 – 2016	50
<i>Total Number of Earthquakes within the New England states between 1638 and 2016 is 1,381.</i>		

Source: Northeast States Emergency Consortium website, <http://nsec.org/massachusetts-earthquakes/>

Probability of Future Events

One measure of earthquake activity is the Earthquake Index Value. It is calculated based on historical earthquake events data using USA.com algorithms. It is an indicator of the earthquake activity level in a region. A higher earthquake index value means a higher chance of earthquake events. Data was used for Worcester County to determine the Earthquake Index Value as shown in the table below:

Table 12

Earthquake Index for Worcester County	
Worcester County	0.34
Massachusetts	0.70
United States	1.81

Source: *USA.com*

The local Hazard Mitigation Team reports that no earthquakes have been felt in North Brookfield. Based upon existing records, there is a “very low” frequency (less than 1 percent probability in any given year) of an earthquake in North Brookfield.

Impact

Massachusetts introduced earthquake design requirements into their building code in 1975 and improved building code for seismic reasons in the 1980s. However, these specifications apply only to new buildings or to extensively-modified existing buildings. Buildings, bridges, water supply lines, electrical power lines and facilities built before the 1980s may not have been designed to withstand the forces of an earthquake. The first edition of the Massachusetts State Building Code went into effect on January 1, 1975, and 75.4% percent of the Town’s occupied housing units was constructed in 1979 or earlier (American Communities Survey, 2015 5-year estimate). The seismic standards were upgraded with the 1997 revision of the State Building Code. Despite its older housing stock, North Brookfield faces a “minor” impact from earthquakes, with little damage likely to occur due to the extreme rarity of damaging events.

Vulnerability

Based on the above analysis, North Brookfield has a hazard index rating of “5- lowest risk” from earthquakes. HAZUS- MH (multiple-hazards) is a computer program developed by FEMA to estimate losses due to a variety of natural hazards. The HAZUS earthquake module allows users to define an earthquake magnitude and model the potential damages caused by that earthquake as if its epicenter had been at the geographic center of the study area. For the purposes of this plan, a magnitude 5.0 earthquake was selected for analysis. Historically, major earthquakes are rare in New England, although a magnitude 5 event occurred in 1963.

Table 13 - Estimated Damages from an Earthquake

Magnitude 5.0	
Building Characteristics	
Estimated total number of buildings	1,746
Estimated total building replacement value (2010 \$)	\$ 745,000,000
Building Damages	
# of buildings sustaining slight damage	508
# of buildings sustaining moderate damage	288
# of buildings sustaining extensive damage	87
# of buildings completely damaged	24
Population Needs	
# of households displaced	94
# of people seeking public shelter	49
Debris	
Building debris generated (tons)	30,000
# of truckloads to clear debris (@ 25 tons/truck)	1,080
Value of Damages (dollars)	
Total property damage	\$101,400,000
Total losses due to business interruption	\$19,200,000

For more information on the HAZUS-MH software, visit www.fema.gov/hazus-software.

4.5 Extreme Temperatures

Hazard Description

As per the Massachusetts Hazard Mitigation Plan, extreme cold is a dangerous situation that can result in health emergencies for susceptible people, such as those without shelter or who are stranded or who live in homes that are poorly insulated or without heat. There is no universal definition for extreme temperatures, with the term relative to local weather conditions. For Massachusetts, extreme temperatures can be defined as those that are far outside the normal ranges. The average temperatures for Massachusetts are:

- Winter (Dec-Feb) Average = 27.51°F
- Summer (Jun-Aug) Average = 68.15°F

Criteria for issuing alerts for Massachusetts are provided on National Weather Service web pages at www.weather.gov/box/criteria.

Location

Extreme temperatures can be expected to be fairly uniform across North Brookfield during a given weather event, due to the town's lack of extreme elevations and coastal areas. Therefore, this hazard is of "large" geographic coverage.

Extent

As per the Massachusetts Hazard Mitigation Plan, the extent (severity or magnitude) of extreme cold temperatures are generally measured through the Wind Chill Temperature Index. Wind Chill Temperature is the temperature that people and animals feel when outside and it is based on the rate of heat loss from exposed skin by the effects of wind and cold. The chart shows three shaded areas of frostbite danger. Each shaded area shows how long a person can be exposed before frostbite develops. In Massachusetts, a wind chill warning is issued by the NWS Taunton Forecast Office when the Wind Chill Temperature Index, based on sustained wind, is -25°F or lower for at least three hours.

Extreme temperatures would affect the whole community.

Wind Chills

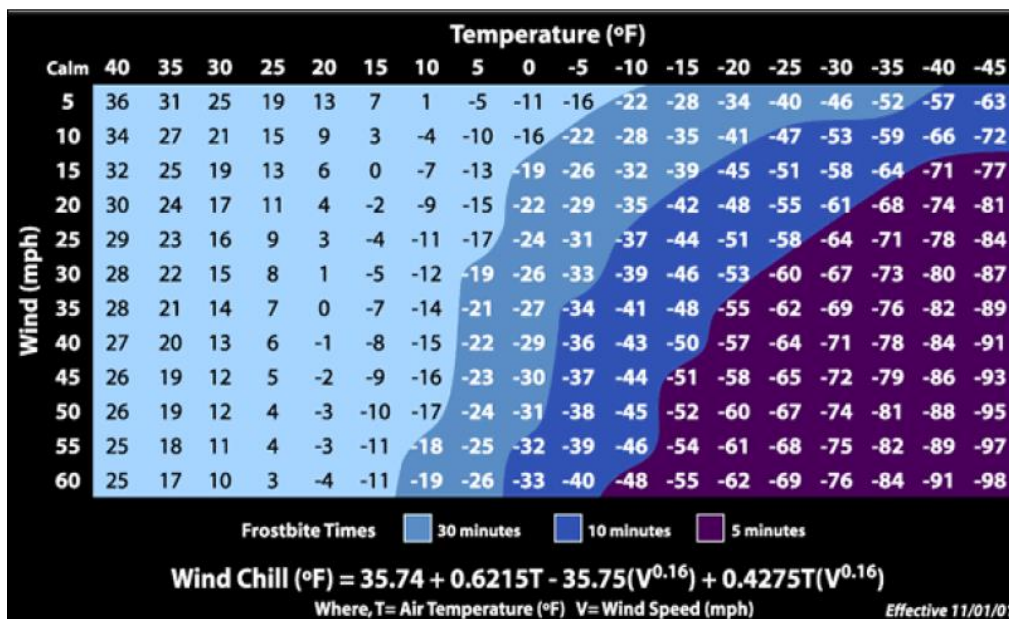


Figure 5

For extremely hot temperatures, the heat index scale is used, which combines relative humidity with actual air temperature to determine the risk to humans. The NWS issues a Heat Advisory when the Heat Index is forecast to reach 100-104 degrees F for 2 or more hours. The NWS issues

an Excessive Heat Warning if the Heat Index is forecast to reach 105+ degrees F for 2 or more hours. The following chart indicates the relationship between heat index and relative humidity:

Heat Index

Table 14

Relative Humidity (%)		80	82	84	86	88	90	92	94	96	98	100	102	104	106	108	110
	40	80	81	83	85	88	91	94	97	101	105	109	114	119	124	130	136
	45	80	82	84	87	89	93	96	100	104	109	114	119	124	130	137	
	50	81	83	85	88	91	95	99	103	108	113	118	124	131	137		
	55	81	84	86	89	93	97	101	106	112	117	124	130	137			
	60	82	84	88	91	95	100	105	110	116	123	129	137				
	65	82	85	89	93	98	103	108	114	121	128	136					
	70	83	86	90	95	100	105	112	119	126	134						
	75	84	88	92	97	103	109	116	124	132							
	80	84	89	94	100	106	113	121	129								
	85	85	90	96	102	110	117	126	135								
	90	86	91	98	105	113	122	131									
	95	86	93	100	108	117	127										
	100	87	95	103	112	121	132										
Category		Heat Index					Health Hazards										
Extreme Danger		130 °F – Higher					Heat Stroke or Sunstroke is likely with continued exposure.										
Danger		105 °F – 129 °F					Sunstroke, muscle cramps, and/or heat exhaustion possible with prolonged exposure and/or physical activity.										
Extreme Caution		90 °F – 105 °F					Sunstroke, muscle cramps, and/or heat exhaustions possible with prolonged exposure and/or physical activity.										
Caution		80 °F – 90 °F					Fatigue possible with prolonged exposure and/or physical activity.										

Previous Occurrences

The following are some of the lowest temperatures recorded in parts of Massachusetts for the period from 1895 to present (Source: NOAA, www.ncdc.noaa.gov). North Brookfield's annual average temperature range is 56° for the high and 39.6° for the low. North Brookfield's temperature range is essentially the same as in Worcester, located some 15 miles away and at a similar elevation

- Blue Hills, MA: –21°F
- Boston, MA: –12°F
- Worcester, MA: –24°F

The following are some of the highest temperatures recorded for the period from 1895 to present (NOAA):

- Blue Hills, MA: 101°F
- Boston, MA: 102°F
- Worcester, MA: 102°F

Probability of Future Events

The probability of future extreme heat and extreme cold is considered to be "moderate," or between 10 and 40 percent in the next year.

Impact

The impact of extreme heat or cold in North Brookfield is considered to be "limited," with no property damage and very limited effect on humans. Extreme temperatures are of some concern for the local Hazard Mitigation Team due to health threats to the very young and very old.

Vulnerability

North Brookfield's vulnerability to extreme heat and cold is considered to be, "4 - Low Risk."

4.6 Flooding

Hazard Description

Flooding was the most prevalent natural hazard identified by local officials in North Brookfield. Flooding is generally caused by hurricanes, nor'easters, severe rainstorms, and thunderstorms. Global climate change has the potential to exacerbate these issues over time with the potential for more severe and frequent storm and rainfall events. In the Northeast, we are seeing 71% more rainfall in large storms than in the past. There are several different types of flood hazards – from stormwater inundation and poor drainage infrastructure to riverine flooding and storm surges to dam failures. The most extensive damage would result from dam failure. However, the most frequent flood threat is due to riverine and stormwater flooding.

Location

Flooding and flood-prone areas in North Brookfield are closely associated with the course of the Five Mile River and its tributaries. According to a GIS analysis performed by CMRPC, there are 253 parcels in North Brookfield that are susceptible flooding during a 100-year or base flood events, with 48 of these parcels containing structures. Due to the hilly nature of the town, much of

North Brookfield is upland, away from rivers and ponds and as a result, the location of this hazard is relatively “small”. Map 2 in Appendix A illustrates the FEMA FIRM 100-year flood zones in the town, as well as other locally-identified flooding areas. Despite much of the town being rural and upland, the urban environment downtown, and extensive network of imperviousness combined with inadequate drainage systems often leads to localized flooding due to excessive surface water runoff.

Extent

The average annual precipitation for North Brookfield and surrounding areas in central Massachusetts has been 45 to 50 inches during the past several years.

Water levels in North Brookfield’s rivers, streams, and wetlands rise and fall seasonally and during high rainfall events. High water levels are typical in spring, due to snowmelt and ground thaw combined with rainfall. This is a period when flood hazards are normally expected. Low water levels occur in summer due to high evaporation and plant uptake (transpiration). At any time, heavy rainfall may create conditions that raise water levels in rivers and streams above bank full stage, which then overflow to adjacent land.

Based on past records and the knowledge and experience of members of the North Brookfield Hazard Mitigation team and residents, the extent of the impact of localized flooding would be considered "minor".

Previous Occurrences

In addition to the floodplains mapped by FEMA for the 100-year and 500-year flood, North Brookfield often experiences minor flooding at isolated locations due to drainage problems, or problem culverts. The following specific flooding locations were identified by the North Brookfield Hazard Mitigation Team based on knowledge of past flood events:

- Reoccurring flooding on Slab City Rd. during rain storms due to undersized box culvert and beaver dams
- Flooding along the area of 68 Gilbert Street during rainfall events due to an undersized and ageing culvert
- Flooding along St. Clair Ave. due to a failing underground culvert. There are no known maps of the location of this culvert and is believed to be in disrepair and cannot be located.
- Flooding behind houses along Grove Street due to a failing culvert
- Areas along Town Farm Road experience flooding due to drainage and tree issues.
- Tucker Street is closed seasonally due to flooding caused by beaver dams along Coys

Brook

- In the area of 10 Spring Street flooding occurs during rain storms due to an undersized and ageing culvert

Additionally, undersized culverts and the surface sewer system are a problem town wide.

In addition to the locations listed here (and mapped in Appendix A, Map 2), there are many areas with no record of previous flood incidents that could be affected in the future by heavy rain and runoff.

There have been recent flooding situations that has led to FEMA Disaster Declarations in Massachusetts. Most recently the June 1, 2011, March 12- April 26, 2010 and April 15-25, 2007 storms and subsequent flooding. North Brookfield was minimally affected by these storms. According to the Local Hazard Mitigation Team there have been negligible impacts to the town. The situations that lead to FEMA Disaster Declaration are fairly rare.

In recent years, there have been 0 loss claims in North Brookfield made to FEMA by National Flood Insurance Program (NFIP) participants. As of January, North Brookfield has no repetitive loss properties. As defined by the NFIP, a repetitive loss property is any property which the NFIP has paid for two or more flood claims of \$1,000 or more in any given 10-year period since 1978.

Probability of Future Events

Based upon previous data, there is "low" probability of localized flooding occurring in North Brookfield.

Impact

With less than 10% of total town area likely to be affected by a flooding event, the town faces a potential "minor" impact.

Utilizing the GIS analysis noted above, the total value of the structures, as of February 2017, on the 253 parcels that are susceptible to a 100-year flood is approximately \$4,874,660.

HAZUS- MH (multiple-hazards) is a computer program developed by FEMA to estimate losses due to a variety of natural hazards. The HAZUS software was used to model potential damage to the community from a 100-year flood event, assuming a 1 square mile data resolution.

Table 15

Estimated Damages from Flood	
	100 Year flood event
Building Characteristics	
Estimated total number of buildings	1,746
Estimated total building replacement value (2010 \$)	\$ 745,000,000
Building Damages	
# of buildings sustaining minor damage (1-10%)	1
# of buildings sustaining moderate damage (11-40%)	0
# of buildings sustaining severe damage (41-50%)	0
# of buildings destroyed	0
Population Needs	
# of households displaced	17
# of people seeking public shelter	0
Value of Damages	
Total property damage (buildings and content)	\$1,450,000
Total losses due to business interruption	\$0

Historically there are a number of recorded instances of flood events of this size. This model was included in order to help planners and emergency personnel quantify the impact scale of a plausible and increasingly likely flood event as we observe increasing frequency of severe weather events due to climate change.¹

Vulnerability

Based on this HAZUS-MH analysis, North Brookfield faces a hazard index rating of “3 - medium risk” from flooding.

4.7 Hurricanes

Hazard Description

Hurricanes are classified as cyclones and defined as any closed circulation developing around a low-pressure center in which the winds rotate counter-clockwise in the Northern Hemisphere (or clockwise in the Southern Hemisphere) and whose diameter averages 10 to 30 miles across. The

¹ For more information on the HAZUS-MH software, go to <http://www.fema.gov/hazus-software>.

primary damaging forces associated with these storms are high-level sustained winds and heavy precipitation. Hurricanes are powerful rainstorms with strong winds that can reach speeds of up to 200 miles per hour and generate large amounts of precipitation. Hurricanes generally occur between June and November and can result in flooding and wind damage to structures and above-ground utilities.

Location

Because of the hazard's regional nature, the entire Town of North Brookfield is at risk from hurricanes, meaning the location of occurrence is "large." Ridgetops are more susceptible to wind damage while areas susceptible to flooding are likely to be affected by heavy rainfall.

Extent

As an incipient hurricane develops, barometric pressure (measured in millibars or inches) at its center falls and winds increase. If the atmospheric and oceanic conditions are favorable, it can intensify into a tropical depression. When maximum sustained winds reach, or exceed 39 miles per hour, the system is designated a tropical storm, given a name, and is closely monitored by the National Hurricane Center in Miami, Florida. When sustained winds reach or exceed 74 miles per hour the storm is deemed a hurricane. Hurricane intensity is further classified by the Saffir-Simpson Hurricane Wind Scale, which rates hurricane wind intensity by category on a scale of 1 to 5, with 5 being the most intense.

Table 16

Saffir-Simpson Scale	
Hurricane Category	Maximum Sustained Wind Speed (MPH)
1	74–95
2	96–110
3	111–129
4	130–156
5	157 +

Source: National Hurricane Center, 2012

Previous Occurrences

Hurricanes that have affected the region in which North Brookfield is located through 2017 are shown in the following table:

Table 17

Major Hurricanes and Tropical Storms Affecting the region		
Hurricane/Storm Name	Year	Saffir/Simpson Category (when reached MA)
Great Hurricane of 1938	1938	3
Great Atlantic Hurricane	1944	1
Hurricane Dog	1950	Unclear
Carol	1954	3
Edna	1954	1
Diane & Connie	1955	Tropical Storms, 5 days apart
Donna	1960	Unclear, 1 or 2
Belle	1976	Minor Storm
Gloria	1985	1
Bob	1991	2
Floyd	1999	Tropical Storm
Irene	2011	Tropical Storm
Sandy	2012	Tropical Storm

Source: National Oceanic and Atmospheric Administration

Probability of Future Events

North Brookfield's location, approximately 60 miles inland, in central Massachusetts reduces the risk of extremely high winds that are associated with hurricanes, although it can still experience some high wind events. Based upon past occurrences, it is reasonable to say that there is a "low" probability (1 percent to 10 percent in any given year) of hurricanes in North Brookfield. Climate change is projected to result in more severe weather, including increased occurrence and intensity of hurricanes and tropical storms. Because of this, the occurrence of hurricanes in North Brookfield will increase in the future.

Impact

A description of the damages that could occur due to a hurricane is described by the Saffir-Simpson scale, as shown below:

Table 18

Hurricane Damage Classifications			
Storm Category	Damage Level	Description of Damages	Wind Speed (MPH)
1	MINIMAL	No real damage to building structures. Damage primarily to unanchored mobile homes, shrubbery, and trees. Also, some coastal flooding and minor pier damage. An example of a Category 1 hurricane is Hurricane Dolly (2008).	74-95
	Very dangerous winds will produce some damage		
2	MODERATE	Some roofing material, door, and window damage. Considerable damage to vegetation, mobile homes, etc. Flooding damages piers and small craft in unprotected moorings may break their moorings. An example of a Category 2 hurricane is Hurricane Francis in 2004.	96-110
	Extremely dangerous winds will cause extensive damage		
3	EXTENSIVE	Some structural damage to small residences and utility buildings, with a minor amount of curtain wall failures. Mobile homes are destroyed. Flooding near the coast destroys smaller structures, with larger structures damaged by floating debris. Terrain may be flooded well inland. An example of a Category 3 hurricane is Hurricane Ivan (2004).	111-129
	Devastating damage will occur		
4	EXTREME	More extensive curtain wall failures with some complete roof structure failure on small residences. Major erosion of beach areas. Terrain may be flooded well inland. An example of a Category 4 hurricane is Hurricane Charley (2004).	130-156
	Catastrophic damage will occur		
5	CATASTROPHIC	Complete roof failure on many residences and industrial buildings. Some complete building failures with small utility buildings blown over or away. Flooding causes major damage to lower floors of all structures near the shoreline. Massive evacuation of residential areas may be required. An example of a Category 5 hurricane is Hurricane Andrew (1992).	157+
	Catastrophic damage will occur		

The town faces a “limited” impact from hurricanes, with 10 percent or less of North Brookfield affected.

Vulnerability

Based on the above analysis, North Brookfield has a hazard index rating of “3 – medium risk” from hurricanes.

HAZUS- MH (multiple-hazards) is a computer program developed by FEMA to estimate losses due to a variety of natural hazards. The HAZUS software was used to model potential damages to the community from a 100-year and 500-year hurricane event; storms that are 1% and .02% likely to happen in a given year, and roughly equivalent to a Category 2 and Category 4 hurricane. The damages caused by these hypothetical storms were modeled as if the storm track passed directly through the town, bringing the strongest winds and greatest damage potential.

Table 19

Estimated Damages from Hurricanes		
	100 Year	500 Year
Building Characteristics		
Estimated total number of buildings	1,746	
Estimated total building replacement value (2014 \$)	\$ 745,000,000	
Building Damages		
# of buildings sustaining minor damage	20	185
# of buildings sustaining moderate damage	1	22
# of buildings sustaining severe damage	0	1
# of buildings destroyed	0	0
Population Needs		
# of households displaced	0	7
# of people seeking public shelter	0	1
Debris		
Building debris generated (tons)	865	1,708
Tree debris generated (tons)	75	6,267
# of truckloads to clear building debris	7	38
Value of Damages (thousands of dollars)		
Total property damage (buildings and content)	\$900,000	\$6,080,000
Total losses due to business interruption	\$ 80,000	\$1,520,000

Though there are no recorded instances of a hurricane equivalent to a 500-year storm passing through Massachusetts, this model was included in order to present a reasonable “worst case scenario” that would help planners and emergency personnel evaluate the impacts of storms that

may be more likely in the future, as we enter into the climate change era. For more information on the HAZUS-MH software visit: <http://www.fema.gov/hazus-software>.

4.8 Severe Snowstorms / Ice Storms / Nor'easters

Hazard Description

Severe winter storms can pose a significant risk to property and human life. Severe snowstorms and ice storms can involve rain, freezing rain, ice, snow, cold temperatures and wind. Heavy snowfall and extreme cold can immobilize an entire region. Even areas that normally experience mild winters can be hit with a major snowstorm or extreme cold. Winter storms can result in flooding, storm surge, closed highways, blocked roads, downed power lines and hypothermia. A northeast coastal storm, known as a nor'easter, is typically a large counter-clockwise wind circulation around a low-pressure center often resulting in heavy snow, high winds, and rain.

Location

The entire Town of North Brookfield is susceptible to severe snowstorms, which means the location of occurrence is “large.” Because these storms occur regionally, they would impact the entire town.

Extent

The Northeast Snowfall Impact Scale (NESIS) developed by Paul Kocin of The Weather Channel and Louis Uccellini of the National Weather Service (Kocin and Uccellini, 2004) characterizes and ranks high-impact Northeast snowstorms. These storms have large areas of 10-inch snowfall accumulations and greater. NESIS has five categories: Extreme, Crippling, Major, Significant, and Notable. The index differs from other meteorological indices in that it uses population information in addition to meteorological measurements. Thus, NESIS gives an indication of a storm's societal impacts.

NESIS scores are a function of the area affected by the snowstorm, the amount of snow, and the number of people living in the path of the storm. The aerial distribution of snowfall and population information are combined in an equation that calculates a NESIS score which varies from around one for smaller storms to over ten for extreme storms. The raw score is then converted into one of the five NESIS categories. The largest NESIS values result from storms producing heavy snowfall over large areas that include major metropolitan centers.

Table 20

Northeast Snowfall Impact Scale Categories		
Category	NESIS Value	Description
1	1—2.499	Notable
2	2.5—3.99	Significant
3	4—5.99	Major
4	6—9.99	Crippling
5	10.0+	Extreme

Source : <http://www.ncdc.noaa.gov/snow-and-ice/rsi/nesis>

Previous Occurrences

The 2011 Halloween Nor'easter produced unusually early snowfall on trees that were often still in leaf, adding extra weight, with the ground in some areas still soft from a preceding warm, rainy period that increased the possibility trees could be uprooted. Based on data available from the National Oceanic and Atmospheric Administration (NOAA), there are 62 high-impact snowstorms, according to the NESIS scale, since 1958 which affected the Northeast Corridor. Of these, 36 storms resulted in snowfalls in North Brookfield of at least 10 inches. These storms are listed in the table below:

Table 21

Winter Storms Producing Over 10 Inches of Snow in North Brookfield, 1958-2018			
Date	NESIS Value	NESIS Category	NESIS Classification
3/11/2018	3.16	2	Significant
3/05/2018	3.45	2	Significant
1/03/2018	1.71	1	Notable
3/12/2017	5.03	3	Major
2/8/2015	1.32	1	Notable
1/29/2015	5.42	3	Major
1/25/2015	2.62	2	Significant
2/11/2014	5.28	3	Major
3/4/2013	3.05	2	Significant
2/7/2013	4.35	3	Major

Winter Storms Producing Over 10 Inches of Snow in North Brookfield, 1958-2018			
10/29/2011	1.75	1	Notable
1/26/2011	2.17	1	Notable
1/9/2011	5.31	3	Major
2/23/2010	5.46	3	Major
2/12/2006	4.1	3	Major
1/21/2005	6.8	4	Crippling
2/15/2003	7.5	4	Crippling
3/31/1997	2.29	1	Notable
1/6/1996	11.78	5	Extreme
2/2/1995	1.43	1	Notable
2/8/1994	5.39	3	Major
3/12/1993	13.2	5	Extreme
2/10/1983	6.25	4	Crippling
4/6/1982	3.35	2	Significant
2/5/1978	5.78	3	Major
1/19/1978	6.53	4	Crippling
2/18/1972	4.77	3	Major
12/25/1969	6.29	4	Crippling
2/22/1969	4.29	3	Major
2/8/1969	3.51	2	Significant
2/5/1967	3.5	2	Significant
2/2/1961	4.04	3	Major
1/18/1961	4.04	3	Major
12/11/1960	4.53	3	Major
3/2/1960	8.77	4	Crippling
2/14/1958	6.25	4	Crippling

Source : <http://www.ncdc.noaa.gov/snow-and-ice/rsi/nesis>

Probability of Future Events

Based upon the availability of records for Worcester County, the likelihood that a severe snow storm will affect North Brookfield is “very high” (greater than 70 percent in any given year).

Research on climate change indicates that there is great potential for stronger, more frequent storms as the global temperature increases. The Massachusetts State Climate Change Adaptation Report says that predicted changes in the amount, frequency, and timing of precipitation, and the

shift toward more rainy and icy winters would have significant implications. By the end of the century, under the high-emissions scenario, annual precipitation is expected to increase by 14%, with a slight decrease in the summer, and a 30% increase in the winter. Additionally, it is predicted that most of the winter precipitation will be in the form of rain rather than snow ²

Impact

The town faces a “limited” impact or less than 10 percent of total property damaged, from snowstorms.

The weight from multiple snowfall events can test the load ratings of building roofs and potentially cause significant damage. Multiple freeze-thaw cycles can also create large amounts of ice and make for even heavier roof loads and lead to ice dams and both interior and exterior structural damage.

Other impacts from snowstorms and ice storms include:

- Disrupted power, internet, and phone service
- Damage to telecommunications structures and utility infrastructure
- Infrastructure and other property are also at risk from severe winter storms and the associated flooding that can occur following heavy snow melt.
- Tree damage and fallen branches that cause utility line damage and roadway blockages – particularly during ice, sleet, or heavy snow storms
- Unsafe driving conditions and increased traffic accidents
- Reduced ability of emergency officials to respond promptly to medical emergencies or fires

Vulnerability

Based on the above assessment, North Brookfield has a hazard index rating of “2 — high risk” from snowstorms and ice storms.

Utilizing the town’s total value of all property, \$379,845,736 (Massachusetts Department of Revenue, 2016), and an estimated 5 percent of damage to 10 percent of residential structures, approximately \$1,899,229 worth of damage could occur from a severe snowstorm. This is a rough estimate and likely reflects a worst-case scenario. The cost of repairing or replacing the roads, bridges, utilities, and contents of structures is not included in this estimate.

² <https://www.mass.gov/service-details/climate-change-in-massachusetts-and-its-impacts>

4.9 Severe Thunderstorms / Wind / Tornado

Hazard Description

A thunderstorm is a storm with lightning and thunder produced by a cumulonimbus cloud, usually producing gusty winds, heavy rain, and sometimes generating hail. Effective January 5, 2010, the NWS modified the hail size criterion to classify a thunderstorm as ‘severe’ when it produces damaging wind gusts in excess of 58 mph (50 knots), hail that is 1 inch in diameter or larger (quarter size), or a tornado (NWS, 2013).

Wind is air in motion relative to surface of the earth. For non-tropical events over land, the NWS issues a Wind Advisory (sustained winds of 31 to 39 mph for at least 1 hour or any gusts 46 to 57 mph) or a High Wind Warning (sustained winds 40+ mph or any gusts 58+ mph). For non-tropical events over water, the NWS issues a small craft advisory (sustained winds 25-33 knots), a gale warning (sustained winds 34-47 knots), a storm warning (sustained winds 48 to 63 knots), or a hurricane force wind warning (sustained winds 64+ knots). For tropical systems, the NWS issues a tropical storm warning for any areas (inland or coastal) that are expecting sustained winds from 39 to 73 mph. A hurricane warning is issued for any areas (inland or coastal) that are expecting sustained winds of 74 mph. Effects from high winds can include downed trees and/or power lines and damage to roofs, windows, etc. High winds can cause scattered power outages. High winds are also a hazard for the boating, shipping, and aviation industry sectors.

Tornadoes are swirling columns of air that typically form in the spring and summer during severe thunderstorm events. In a relatively short period of time and with little or no advance warning, a tornado can attain rotational wind speeds in excess of 250 miles per hour and can cause severe devastation along a path that ranges from a few dozen yards to over a mile in width. The path of a tornado may be hard to predict because they can stall or change direction abruptly. Within Massachusetts, tornadoes have occurred most frequently in the Connecticut River Valley and in western Worcester County, with North Brookfield some 20 miles east of the zone of most frequent past occurrence. High wind speeds, hail, and debris generated by tornadoes can result in loss of life, downed trees and power lines, and damage to structures and other personal property.

Location

As per the Massachusetts Hazard Mitigation Plan, the entire town is at risk of high winds, severe thunderstorms, and tornadoes. The plan identifies North Brookfield and its surrounding communities as having a moderate frequency of tornado occurrence within the Massachusetts context. However, the actual area affected by thunderstorms, wind, or tornadoes is “small,” with less than 10 percent of the town generally affected.

Extent

An average thunderstorm is 15 miles across and lasts 30 minutes; severe thunderstorms can be much larger and longer. Southern New England typically experiences 10 to 15 days per year with severe thunderstorms. Thunderstorms can cause hail, wind, and flooding.

Tornadoes are measured using the enhanced F-Scale, shown with the following categories and corresponding descriptions of damage:

Table 22

Enhanced Fujita Scale Levels and Descriptions of Damage			
EF-Scale Number	Intensity Phrase	3-Second Gust (MPH)	Type of Damage Done
EF0	Gale	65–85	Some damage to chimneys; breaks branches off trees; pushes over shallow-rooted trees; damages to sign boards.
EF1	Moderate	86–110	The lower limit is the beginning of hurricane wind speed; peels surface off roofs; mobile homes pushed off foundations or overturned; moving autos pushed off the roads; attached garages may be destroyed.
EF2	Significant	111–135	Considerable damage. Roofs torn off frame houses; mobile homes demolished; boxcars pushed over; large trees snapped or uprooted; light object missiles generated.
EF3	Severe	136–165	Roof and some walls torn off well-constructed houses; trains overturned; most trees in forest uprooted.
EF4	Devastating	166–200	Well-constructed houses leveled; structures with weak foundations blown off some distance; cars thrown and large missiles generated.

Table 23 - Extent Scale for Hail

CONVERTING TRADITIONAL HAIL SIZE DESCRIPTIONS	
Traditional object-to-size conversion for assessment and translation of severe hail reports. We encourage <i>measurement</i> , not estimation, of hail size.	
HAIL SIZE (in.)	OBJECT ANALOG REPORTED
.50	Marble, moth ball
.75	Penny
.88	Nickel
1.00	Quarter
1.25	Half dollar
1.50	Walnut, ping pong
1.75	Golf ball
2.00	Hen egg
2.50	Tennis ball
2.75	Baseball
3.00	Tea cup
4.00	Grapefruit
4.50	Softball

Previous Occurrences

Because thunderstorms and wind affect the town regularly on an annual basis, there are not significant records available for these events. As per the Massachusetts Hazard Mitigation Plan, there are approximately 10 to 30 days of thunderstorm activity in the state each year.

In Worcester County, there have been a number of F1 tornadoes occurring sporadically over the years. However, a data search for tornadoes rating 3 or above, or resulting in death/injury, or significant property damage, identifies the following events:

- In 1953, a F4 tornado struck Worcester. The event resulted in at least 90 fatalities, and more than 1,200 injured. There was extensive property damage. On the same date, a F3 tornado began in the Town of Sutton, South of Worcester.
- In 1981 a F3 tornado struck, resulting in just 3 injuries and very little reported property damage.



Figure 6- Photo: MEMA 2011

- In June 2011, a F3 tornado struck Massachusetts. Few deaths were reported, all in Hampden County. No deaths were reported in Worcester County.

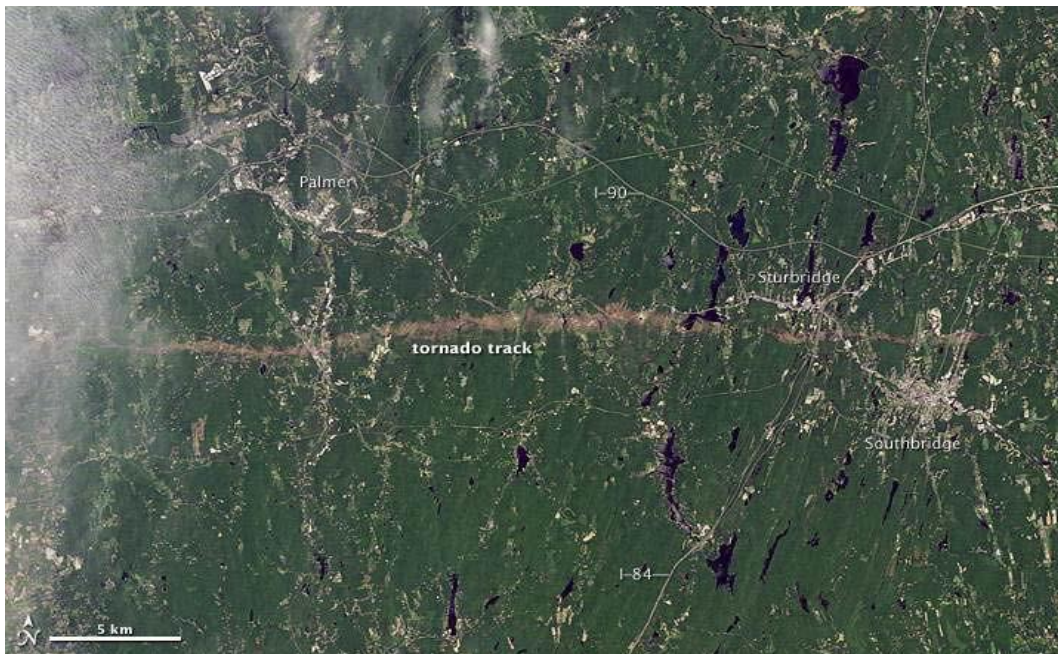


Figure 7 - Above: NASA released this image of part of the 39-mile-long tornado track through south-central Mass. The image was captured June 5, 2011 by Landsat 5 satellite.

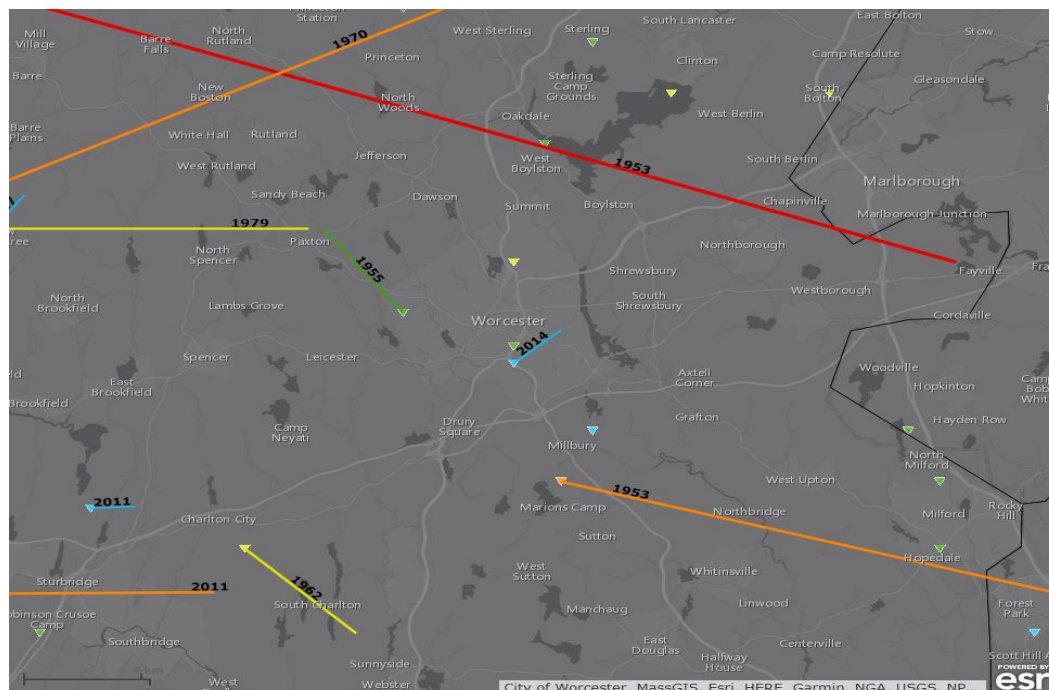


Figure 8 - Tornado Tracks, 1950-2016 in the Worcester area. <https://mrcc.illinois.edu/resources/gisMaps.jsp>

Probability of Future Events

One measure of tornado activity is the tornado index value. Activity is calculated based on historical tornado events data using USA.com algorithms. The index is an indicator of the relative tornado activity level in a region. A higher tornado index value means a higher chance of tornado events. Index values for Worcester and its surroundings are shown below.

Table 24

Tornado Index Value	
Town of North Brookfield	129.18
Worcester County	120.35
Massachusetts	87.60
United States	136.45

Source : <http://www.usa.com/massachusetts-state-natural-disasters-extremes.htm>

Based upon the available historical record, as well as North Brookfield's location in a moderate-density cluster of tornado activity for Massachusetts, there is a "very low" probability (less than 1 percent chance in any given year) of a tornado affecting the town, and a moderate (10 percent to 40 percent chance in any given year) probability of a severe thunderstorm and/or high winds.

Impact

Overall, North Brookfield faces a "minor" impact from severe thunderstorms, and a "limited" impact from severe winds, or tornados, with 10 percent or less of the town likely to be affected.

As indicated as part of the Enhanced Fujita Scale Levels for tornados, the following impacts can result from a tornado:

- EF0 - Some damage to chimneys; break branches off trees; pushes over shallow-rooted trees; damages to sign boards.
- EF1 - The lower limit is the beginning of hurricane wind speed; peels surface off roofs; mobile homes pushed off foundations or overturned; moving autos pushed off the roads; attached garages may be destroyed.
- EF2 - Considerable damage. Roofs torn off frame houses; mobile homes demolished; boxcars pushed over; large trees snapped or uprooted; light object missiles generated.

- EF3 - Roof and some walls torn off well-constructed houses; trains overturned; most trees in forest uprooted.
- EF4 - Well-constructed houses leveled; structures with weak foundations blown off some distance; cars thrown and large projectiles generated.

Vulnerability

Based on the above assessment, North Brookfield has a hazard index rating of “2- high risk” from severe thunderstorms and winds, and a “4 – low risk” from tornadoes.

The potential for locally catastrophic damage is a factor in any tornado, severe thunderstorm, or wind event. In North Brookfield, a tornado that hit residential areas would leave much more damage than a tornado with a travel path that ran along the town’s uplands, where less settlement has occurred. Most buildings in the town have not been built to Zone 1, Design Wind Speed Codes. The first edition of the Massachusetts State Building Code went into effect on January 1, 1975, and 75.4% percent of the town’s 2,204 occupied housing units were constructed in 1979 or earlier (American Communities Survey, 2015 5-year estimate. Private homes and town facilities are vulnerable to strong winds and tornados. Utility lines throughout the town are also vulnerable, particularly where trees have not been trimmed recently.

Utilizing the town’s total value of all property, \$379,845,736 (Massachusetts Dept. of Revenue, 2016), and an estimated 10 percent of damage to 5 percent of all structures, the estimated amount of damage from a tornado is \$1,899,229. The cost of repairing or replacing the roads, bridges, utilities, and contents of structures is not included in this estimate.

4.10 Wildfires / Brush Fires

Hazard Description

Wildfires are typically fires triggered by lightning or accidents, involving full-sized trees as well as meadows and scrublands. Brushfires are uncontrolled fires that occur in meadows and scrublands, but do not involve full-sized trees. Typical causes of brushfires and wildfires are lightning strikes, human carelessness, and arson.

FEMA has classifications for 3 different classes of wildfires:

- Surface fires are the most common type of wildfire, with the surface burning slowly along the floor of a forest, killing or damaging trees.
- Ground fires burn on or below the forest floor and are usually started by lightening
- Crown fires move quickly by jumping along the tops of trees. A crown fire may spread rapidly, especially under windy conditions.

Potential vulnerabilities to wildfires include damage to structures and other improvements, and impacts on natural resources. Smoke and air pollution from wildfires can be a health hazard, especially for sensitive populations including children, the elderly, and those with respiratory and cardiovascular diseases.

Location

Worcester County has approximately 645,000 acres of forested land, which accounts for 64% of total land area (Massachusetts Office of GIS, 2007). In North Brookfield, an estimated 59% of the land is forested. While North Brookfield is developed in a mostly low-density suburban pattern, the presence of a large forest does present some risk for wildfires and brush fires. The total amount of town that could be affected by a wildfire is categorized as “large,” or more than 50 percent of the total area.

Extent

Wildfires can cause widespread damage. They can spread very rapidly, depending on local wind speeds and can be very difficult to get under control. Fires can last for several hours up to several days.

In North Brookfield, approximately 59% percent of the town’s total land area is forested, and is therefore at risk of fire. In drought conditions, a brushfire or wildfire would be a matter of concern. As noted in the next section describing previous occurrences of wildfire, there have not been any major wildfires recorded in Rutland in recent decades. Based on historic data for 2006-2017, it is estimated that brush fires destroyed 45.5 acres of forested area (Massachusetts Fire Incident Reporting System).

Rating of wildfires is shown in the table below:

Table 25 - Extent of Wildfires

Rating	Basic Description	Detailed Description
<p>CLASS 1: Low Danger (L)</p> <p>Color Code: Green</p>	Fires not easily started	Fuels do not ignite readily from small firebrands. Fires in open or cured grassland may burn freely a few hours after rain, but wood fires spread slowly by creeping or smoldering and burn in irregular fingers. There is little danger of spotting.
<p>CLASS 2: Moderate Danger (M)</p> <p>Color Code: Blue</p>	Fires start easily and spread at a moderate rate	Fires can start from most accidental causes. Fires in open cured grassland will burn briskly and spread rapidly on windy days. Woods fires spread slowly to moderately fast. The average fire is of moderate intensity, although heavy concentrations of fuel – especially draped fuel -- may burn hot. Short-distance spotting may occur, but is not persistent. Fires are not likely to become serious and control is relatively easy.
<p>CLASS 3: High Danger (H)</p> <p>Color Code: Yellow</p>	Fires start easily and spread at a rapid rate	All fine dead fuels ignite readily and fires start easily from most causes. Unattended brush and campfires are likely to escape. Fires spread rapidly and short-distance spotting is common. High intensity burning may develop on slopes or in concentrations of fine fuel. Fires may become serious and their control difficult, unless they are hit hard and fast while small.
<p>CLASS 4: Very High Danger (VH)</p> <p>Color Code: Orange</p>	Fires start very easily and spread at a very fast rate	Fires start easily from all causes and immediately after ignition, spread rapidly and increase quickly in intensity. Spot fires are a constant danger. Fires burning in light fuels may quickly develop high-intensity characteristics - such as long-distance spotting - and fire whirlwinds, when they burn into heavier fuels. Direct attack at the head of such fires is rarely possible after they have been burning more than a few minutes.
<p>CLASS 5: Extreme (E)</p> <p>Color Code: Red</p>	Fire situation is explosive and can result in extensive property damage	Fires under extreme conditions start quickly, spread furiously and burn intensely. All fires are potentially serious. Development into high-intensity burning will usually be faster and occur from smaller fires than in the Very High Danger class (4). Direct attack is rarely possible and may be dangerous, except immediately after ignition. Fires that develop headway in heavy slash or in conifer stands may be unmanageable while the extreme burning condition lasts. Under these conditions, the only effective and safe control action is on the flanks, until the weather changes or the fuel supply lessens.

Previous Occurrences

North Brookfield has 45 paid on call professional firefighters. There have not been any major wildfires in North Brookfield in recent decades. During the period 2006-2017, there were 80 total forest and brush fire incidents, with 45.5 total acres burned (Massachusetts Fire Incident Reporting System).

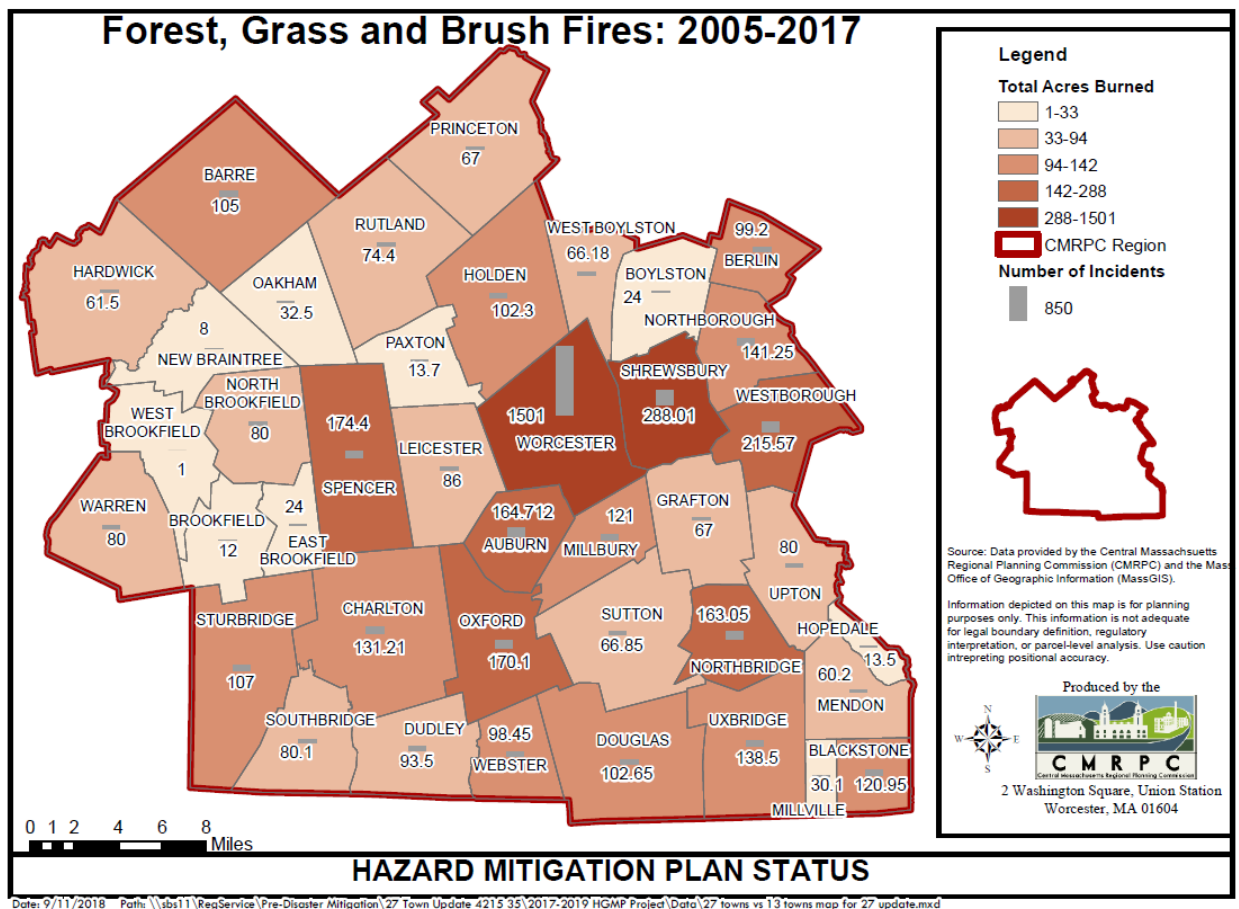


Figure 9 - Forest, Grass and Brush Fires, 2006-2017

Probability of Future Events

In accordance with the Massachusetts Hazard Mitigation Plan, the North Brookfield Hazard Mitigation Team found it is difficult to predict the likelihood of wildfires in a probabilistic manner because the number of variables involved. However, based on regular previous occurrences of minor brush fires, the planning team determined the probability of future damaging wildfire events to be “moderate” (10 percent to 40 percent probability in the next year).

Climate scenarios project summer temperature increases between 2° C and 5° C and precipitation decreases of up to 15 percent. Such conditions would exacerbate summer drought and further promote high-elevation wildfires, releasing stores of carbon and further contributing to the buildup of greenhouse gases. Forest response to increased atmospheric carbon dioxide—the so-called “fertilization effect”—could also contribute to more tree growth and thus more fuel for fires, but the effects of carbon dioxide on mature forests are still largely unknown.

Climate change is also predicted to bring increased wind damage from major storms, as well as new types of pests to the region. Both increased wind and the introduction of new pests could potentially create more debris in wooded areas and result in a larger risk of fires.

Impact

While a large wildfire could in theory damage much of the landmass of North Brookfield, most forested areas are sparsely developed, meaning that wildfire affected areas are not likely to cause damage to personal property. For this reason, the town faces a “minor” impact from wildfires, with little damage likely to occur.

Both wildfires and brush fires can consume homes, other buildings and/or agricultural resources. The impact of wildfires and brush fires are as follows:

- Impact to benefits that people receive from the environment, such as food/water and the regulation of floods and drought
- Impact on local heritage, through the destruction of natural features
- Impact to the economy, due to damage to property and income from land following a wildfire
- Impact through the destruction of people and property

Vulnerability

Based on the above assessment, North Brookfield has a hazard risk index of “4 – low risk” from wildfires.

Utilizing the town’s total value of all property, \$379,845,736 (Massachusetts Dept. of Revenue, 2016), and an estimated 5 percent of damage to 1 percent of all structures, the estimated amount of damage from a wildfire is \$1,899,229. The cost of repairing or replacing the roads, bridges, utilities, and contents of structures is not included in this estimate.\

4.11 Other Hazards

In addition to the hazards identified in previous sections, the Hazard Mitigation Team reviewed the other hazards listed in the Massachusetts Hazard Mitigation Plan: coastal hazards, atmospheric hazards, ice jams, coastal erosion, sea level rise, nor'easters, and tsunamis. It was determined that these hazards are either irrelevant to North Brookfield due to the town's location, or in the case of nor'easters, that the hazard is already included within another hazard described above (severe winter storms). The Hazard Mitigation Team noted the major impact of invasive species to North Brookfield, notably the Gypsy Moths and Beavers which severely damaged forested areas and led to the flooding and seasonal closing of Tucker Road.

Invasive Species

Gypsy Moth

The gypsy moth, *Lymantria dispar*, is one of North America's most devastating forest pests. The species originally evolved in Europe and Asia and has existed there for thousands of years. In either 1868 or 1869, the gypsy moth was accidentally introduced near Boston, MA by E. Leopold Trouvelot. About 10 years after this introduction, the first outbreaks began in Trouvelot's neighborhood and in 1890 the State and Federal Government began their attempts to eradicate the gypsy moth. These attempts ultimately failed and since that time, the range of gypsy moth has continued to spread. Every year, isolated populations are discovered beyond the contiguous range of the gypsy moth but these populations are eradicated or they disappear without intervention. It is inevitable that gypsy moth will continue to expand its range in the future.

The gypsy moth is known to feed on the foliage of hundreds of species of plants in North America but its most common hosts are oaks and aspen. Gypsy moth hosts are located through most of the coterminous US but the highest concentrations of host trees are in the southern Appalachian Mountains, the Ozark Mountains, and in the northern Lake States.

Gypsy moth populations are typically eruptive in North America; in any forest stand densities may fluctuate from near 1 egg mass per hectare to over 1,000 per hectare. When densities reach very high levels, trees may become completely defoliated. Several successive years of defoliation, along with contributions by other biotic and abiotic stress factors, may ultimately result in tree mortality. In most northeastern forests, less than 20% of the trees in a forest will die but occasionally tree mortality may be very heavy.³

³ <https://www.fs.fed.us/ne/morgantown/4557/gmoth/>

Beaver Dams

Beavers are common and abundant throughout most of Massachusetts and they are becoming increasingly more common and plentiful. Beavers play an important role in controlling downstream flooding by storing and slowly releasing floodwater. They also improve water quality by removing or transforming excess nutrients, trapping silt, binding and removing toxic chemicals, and filtering out sediment. However, many towns, including North Brookfield, have concerns with the growing number of beavers and the potential hazard of the beaver dams. Beavers may pose threats to public water supply, the animals carry a couple pathogens which can contaminate drinking water. Also, the beavers dam flowing water, potentially creating water quality and quantity issues. MassDEP can determine if the presence of beavers is a threat to the health and safety of residents. Another risk is abandonment of the dam for various reasons and subsequent failure of the dam.

Failures result in rapid entrenchment downstream of the dam, some evacuation of pond sediments, and rapid colonization of exposed sediments by vegetation. Furthermore, abandoned beaver dams were often found to transform from a pond to a meadow in less than a decade as they filled up with sediment and these sediments were colonized by plants. This abandonment could dramatically reshape parts of North Brookfield in a relatively short amount of time, the shift in wetlands would likely have impacts beyond the localized beaver pond. A major storm or rapid snow melt in the region could significantly impact the stability of beaver dams, though the dams are generally solidly built, the risk of multiple breaches at once should be taken into account. Cascade failure of the dams is also a concern, if one dam collapses others downstream might not be able to handle the sudden increase in the surge of water. Catastrophic flooding would occur and sediment of likely unknown quality would be washed downstream. Municipal officials should be aware of the risk and monitor the beaver population when possible. Cooperation with the Board of Health and MassDEP to trap beavers should occur when appropriate. Also, educating the community at large would ensure they are aware of the risk and encourage the monitoring of various beavers in the town.

Asian Longhorned Beetle

The Asian Longhorned Beetle (ALB, *Anoplophora glabripennis*) is a destructive wood-boring pest of maple and other hardwoods. ALB is believed to have been introduced into the United States from wood pallets and other wood packing material accompanying cargo shipments from Asia. The tree species preferred as hosts by the Asian Longhorned Beetle are hardwoods including several maple species (Norway, sugar, silver, and red maple), box elder, horse chestnut, buckeye, elm, London plane, birch, and willow. All of Worcester and several neighboring towns have been impacted by the infestation. A quarantine remains in place and public education efforts should be

continued. Trees weakened by the infestation could be further damaged and impacted by natural hazards such as snowstorms and severe rain/wind events. Weakened limbs could in turn damage power lines and other infrastructure. Continued monitoring of trees should occur, especially in August, as adult beetles are most active during the summer and early fall and is the time of year when beetles are most active and mobile. The larvae that spent the previous year maturing and eating through their host trees emerge as adults and look for a new place to colonize and start the next generation.

Landslides

An additional hazard that can affect North Brookfield is landslides. Landslides occur in all U.S. states and territories. In a landslide, masses of rock, earth, or debris move down a slope. Landslides may be small or large, slow or rapid. They are generally activated by:

- storms
- earthquakes
- volcanic eruptions
- fires
- alternate freezing or thawing
- steepening of slopes by natural erosion or by human modification

Debris and mud flows are rivers of rock, earth, and other debris saturated with water. They develop when water rapidly accumulates in the ground, during heavy rainfall or rapid snowmelt, changing the earth into a flowing river of mud or “slurry.” They can flow rapidly, striking with little or no warning at avalanche speeds. They also can travel several miles from their source, growing in size as they pick up trees, boulders, cars, and other materials.

There are no documented previous occurrences of significant landslides in North Brookfield. The town is relatively hilly so risk of landslides is minimal. Most of the Town’s rivers are slow moving and frequently dammed, which can minimize landslide risk. Roadways are not generally built close to river channels, reducing undercutting risk from stormwater-induced bank erosion. High slope terrain (defined as 15 to 25% grade) cover 1332.8 acres, or 9.5% of the Town; very high slopes (higher than 25% grade) cover 69 acres, or slightly more than .5% of the Town’s area. Minimal development is present in these areas and, should a landslide occur in the future in North Brookfield, the type and degree of impacts would be highly localized. Vulnerabilities could include damage to structures, damage to transportation and other infrastructure, and localized road closures, though our data review and the local planning team noted no specific concerns. Injuries and casualties, while possible, would be unlikely given the low extent and impact of landslides in North Brookfield.

North Brookfield, like nearly all communities in the CMRPC region, is categorized in the Massachusetts Natural Hazard Mitigation Plan as a low incidence/low susceptibility area for landslide hazards based on review of past occurrences. Landslides are therefore considered low frequency events that may occur once in 50 to 100 years (a 1% to 2% chance of occurring per year).

4.12 Impacts of Climate Change on Hazards

Over the next several decades, climate change can be expected to exacerbate many of the hazards described previously in this chapter. This section identifies the impacts that a changing climate may have on North Brookfield's hazard risk profile going forward. Sources for this section include:

- Northeast Climate Impacts Assessment (NECIA) (2007)
- Massachusetts Climate Change Adaptation Report (2011)
- Massachusetts Multi-Hazard Mitigation Plan (2013)

Expected Changes

The NECIA and state Climate Change Adaptation Report offer Massachusetts state-level predictions for temperature and precipitation for upcoming decades, which show dramatic increases in both measures:

Table 5

Category	Current (1961-1990 avg.)	Predicted Change 2040-2069	Predicted Change 2070-2099
Average Annual Temperature (°F)	46°	50° to 51°	51° to 56°
Average Winter Temperature (°F)	23°	25.5° to 27°	31° to 35°
Average Summer Temperature (°F)	68°	69.5° to 71.5°	74° to 82°
Days over 90 °F	5 to 20 days	-	30 to 60 days
Days over 100 °F	0 to 2 days	-	3 to 28 days
Annual Precipitation	41 inches	43 to 44 inches	44 to 47 inches
Winter Precipitation	8 inches	8.5 to 9 inches	9 to 10.4 inches
Summer Precipitation	11 inches	10.9 to 10.7 inches	10.9 to 11 inches

Flooding

A warming climate is expected to lead to higher precipitation throughout the region. The Massachusetts Multi-Hazard Mitigation Plan estimates that precipitation will increase 6 to 14% by

mid-century, with an increased frequency of floods meeting current 10-year flood levels. Much of the winter precipitation increase is projected to be in the form of rain rather than snow, which may actually reduce peak spring flooding but could lead to more frequent winter runoff events. Overall, the frequency of flooding events and their impacts on people and property can be expected to increase over time, largely in locations that are already of flood concern. Public health may be impacted through increased mosquito populations, which depend on the availability of standing water.

Severe Snowstorms/Ice Storms/Nor'easters

The Massachusetts Multi-Hazard Mitigation Plan estimates that as the climate warms, winter snowfall will be reduced and will generally fall later in the winter season. The Climate Change Adaptation Report predicts that snowfall events will decline over time from around 5 per month during winter to 1 – 3, but that the frequency of the strongest winter storms may actually increase until winter average temperatures warm above the freezing point late in the century. Overall, the risk of winter storms to people and property can be expected to decline.

Hurricanes

The Massachusetts Multi-Hazard Mitigation Plan notes that there is still a great deal of uncertainty about the impacts of climate change on hurricanes and tropical storms, but that the limited evidence available indicates that stronger storms (Category 4 and 5) are becoming more frequent. Overall, the risk from hurricanes and their associated flooding can be expected to increase.

Severe Thunderstorms/Wind/Tornado

Evidence shows that severe weather including thunderstorms, damaging wind and tornados is already increasing as temperatures rise. The Massachusetts Multi-Hazard Mitigation Plan notes that smaller storm events are becoming less frequent, while more severe storms are becoming more common. Overall, the risk from severe storms can be expected to increase.

Wildfire/Brush Fire

The Massachusetts Multi-Hazard Mitigation Plan projects summer rainfall to decrease as much as 15% in the next decades. In combination with higher temperatures and winds, this drop in precipitation would contribute to additional fire risk. Forest response to increased atmospheric carbon dioxide – the so-called “fertilization effect” – could also contribute to more tree growth and thus provide more fuel for wildfires. Climate change may increase winds that spread fires. Faster fires are harder to contain, and thus are more likely to expand into residential neighborhoods. Reduced

stream flows and pond depths may also impact the number and quality of access points for rural firefighting. Overall, the risk of wildfires to people and property can be expected to increase.

Earthquake

Climate change is not expected to significantly impact the risk of earthquakes. The state Multi-Hazard Mitigation Plan notes that there may be additional earthquake risk in conjunction with other hazards such as higher rainfall (which can contribute to soil liquefaction during earthquakes), but that research is not yet mature. At this time, overall risk from earthquake to people and property can be expected to stay around the same as the current risk level.

Dam Failure

The Massachusetts Multi-Hazard Mitigation Plan does not note major concerns about catastrophic dam failure due to climate change. It does, however, mention that increased heavy rainfall events may lead to more frequent dam design failures, in which spillways overflow due to flow rates exceeding design capacity. This type of failure may have a secondary result of increased riverine flooding below dams. Overall, the risk of dam failure to people and property can be expected to stay around the same as the current risk level.

Drought

While the projections noted above show overall increases in precipitation going forward, summer rainfall is actually expected to decline slightly as the climate warms, raising the risk of seasonal droughts. According to the Massachusetts Multi-Hazard Mitigation Plan, droughts are expected to increase in frequency, severity and length. The Massachusetts Climate Change Adaptation Report finds that by the end of the century, under a high carbon emissions scenario, the occurrence of droughts lasting one to three months could go up by as much as 75% over existing conditions. Secondary to drought, wildfire risk can be expected to rise. Overall, the risk of drought to people and property can be expected to increase.

Extreme Temperatures

According to records of the US Historical Climatology Network, average temperatures in the region have increased about 0.2 degrees C (0.5°F) per decade since 1970. These higher average temperatures have primarily been the result of warmer winters (December through March), during which there has been an increase of 1.3°F per decade since 1970. In addition to average temperature increases, the number of extremely hot and record heat days has also increased: the number of days with temperatures of 90°F and higher throughout the Northeast has doubled during the past 45 years. As noted in the table elsewhere in this section, the number of days exceeding 90

degrees is expected to surge several times over, presenting a health risk to young children, the elderly, and to persons with various health conditions. Overall, the risk of extreme temperatures to people and property can be expected to increase.

5.0 CRITICAL FACILITIES & VULNERABLE POPULATIONS

Critical Infrastructure provides the essential services to the Town of North Brookfield and serve as the backbone to the town's security and health. The systems and networks that make up the infrastructure would be disrupted by a natural disaster and would impact response to the disaster and safety of the town.

A Critical Facility is defined as a building, structure, or location which:

- Is vital to the hazard response effort.
- Maintains an existing level of protection from hazards for the community.
- Would create a secondary disaster if a hazard were to impact it.

5.1 Critical Facilities within North Brookfield

The Critical Facilities List for the Town of North Brookfield has been identified utilizing several sources, and the knowledge and expertise of the team:

- North Brookfield's Comprehensive Emergency Management Plan
- MassGIS data
- Critical infrastructure mapping undertaken by CMRPC under contract with the Central Region Homeland Security Advisory Council, which is charged by the Executive Office of Public Safety and Security to administer and coordinate the State Homeland Security Grant for central Massachusetts.

North Brookfield's Hazard Mitigation Team has broken up this list of facilities into four categories:

- Emergency Response Facilities needed in the event of a disaster
- Non-Emergency Response Facilities that have been identified by the Team as non-essential. These are not required in an emergency response event, but are considered essential for the everyday operation of North Brookfield
- Dams
- Facilities/Populations that the Team wishes to protect in the event of a disaster

Critical infrastructure and facilities are mapped in Appendix A.

Category 1 – Emergency Response Facilities

The Town of North Brookfield has identified the Emergency Response Facilities and Services as the highest priority in regards to protection from natural and man-made hazards.

1. Emergency Operations Center

Police Department	55 School Street, North Brookfield, MA
North Brookfield Elementary School	10 New School Drive, North Brookfield, MA
Fire Headquarters	56 School Street, North Brookfield, MA

2. Police Station

Police Department	55 School Street, North Brookfield, MA
-------------------	--

3. Fire Station

Fire Headquarters	56 School Street, North Brookfield, MA
-------------------	--

4. Communications Facilities

Police Department	55 School Street, North Brookfield, MA
North Brookfield Elementary School	10 New School Drive, North Brookfield, MA

5. Highway Department

DPW Headquarters	58 School Street, North Brookfield, MA
------------------	--

6. Primary Evacuation Routes

Route 67
Route 148

Category 2 – Non-Emergency Response Facilities

The town has identified these facilities as non-emergency facilities; however, they are considered essential for the everyday operation of North Brookfield.

1. Water/Sewer

Water Department	14 Bell Road, North Brookfield, MA
North Brookfield WWTP	59 East Brookfield Road, North Brookfield

2. Town Facilities

Town Hall	215 N. Main Street, North Brookfield, MA
North Brookfield Senior Center	29 Forest Street, North Brookfield, MA
North Brookfield Elementary School	10 New School Drive, North Brookfield, MA
North Brookfield High School	10 New School Drive, North Brookfield, MA

3. Utilities

National Grid

Category 3 – Dams

A list of dams in North Brookfield is included in Chapter 4 under Dam Failure.

Category 4 – Facilities/Populations to Protect

1. Special Needs Population/Elderly Housing/Assisted Living

Hillside Meadows	66 Ward Street, North Brookfield, MA
------------------	--------------------------------------

2. Public Buildings/Areas

North Brookfield Senior Center	29 Forest Street, North Brookfield, MA
Town Hall	215 Main Street, North Brookfield, MA
First Congressional Church	144 North Main Street, North Brookfield
St. Joesph's Church	269 North Main Street, North Brookfield
Pilgrim Baptist Church	23 West Brookfield Road, North Brookfield

3. Schools/Daycare

(Please note: The EMD has a list of current daycare facilities but these can change locations and addresses frequently, so this list should be revisited periodically.)

North Brookfield Elementary School	10 New School Drive, North Brookfield, MA
North Brookfield High School	10 New School Drive, North Brookfield, MA

4. Historic Buildings/Sites

According to the Massachusetts Cultural Resources Information System (MACRIS) online database accessed in March 2018, within North Brookfield there are, 2 Areas, approximately 63 Buildings, 6 Objects, and 15 Structures listed on the National Register of Historic Places. It should be noted that MACRIS records are not up to date, and therefore do not reflect the total number of resources that are no longer extant. Significant

municipal and commercial buildings concentrated around Main Street, have been identified as areas of priority to protect from natural hazards

5. Employment Centers

Based on data obtained from the Massachusetts Executive Office of Labor and Workforce Development (EOLWD), the following table shows the largest employers in North Brookfield:

Table 6

Largest Employers in North Brookfield - April 2017		
Company	Location	No. of Employees
Quaboag Corp.	School Street	250-499
Hannaford Supermarket	Gilbert Street	100-249
Madix Inc.	Prospect Street	100-249
North Brookfield School Supt.	High School Drive	100-249
North Brookfield Elementary	High School Drive #2	50-99
North Brookfield Guidance	High School Drive	50-99
North Brookfield High School	High School Drive	50-99
Brookfield Rescue Squad	Summer Street	20-49
Camp Atwater	Shore Road	20-49
North Brookfield Emergency Squad	School Street	20-49

Source: EOLWD

6. Environmental Justice and Vulnerable Populations

The US Environmental Protection Agency defines Environmental Justice (EJ) as the fair treatment and meaningful involvement of all people regardless of race, color, national origin, or income, with respect to the development, implementation, and enforcement of environmental laws, regulations, and policies. Within the context of natural hazards and their mitigation, potential EJ concerns may arise from income-related factors, discrimination (overt or institutional), cultural isolation and barriers, language isolation, lack of transportation access, and disability (especially among the elderly).

In 2015, as part of its Mobility 2040 long range transportation plan, CMRPC identified disproportionate concentrations of EJ and other vulnerable populations at the US Census block group level throughout Central Massachusetts. Thresholds used in this identification process included various metrics from the 2010 Census and 2013 American Community Survey:

- Lower income households (median income below \$50,259/year); or
- Minority residents (20.3% or more of population); or
- Hispanic or Latino residents (14.0% or more of population); or
- Language isolated households (9.45% or more of population); or
- Zero vehicle households (12.75% or more of population); or
- Households with persons 75+ years of age (18.8% or more of population); or

North Brookfield does not have any location fitting the criteria listed above.

Effective communication regarding hazard mitigation to these populations should occur through active outreach efforts with the public, the academic community, other agencies, and non-federal governmental entities, to anticipate, understand, and resolve specific issues of concern. The town should provide resources and assistance to threatened neighborhoods and vulnerable populations to enhance their resilience during and after a disaster.

More information regarding the identification of Environmental Justice and Vulnerable populations in the Central Massachusetts region can be found online.

7. Development

The Town of North Brookfield has had little new development in recent years and no new development or redevelopment is expected in the near future. Generally, development is limited to isolated single new dwellings. The North Brookfield Planning Board, Conservation Commission, Zoning Board of Appeals and the Board of Selectmen all tasked with monitoring development in different capacities and mitigating hazards are considered when appropriate. Future developments are limited in hazard prone areas through North Brookfield's Zoning Bylaws, the Wetlands Policy and the Subdivision Control Bylaws.

6.0 EXISTING PROTECTION

The Town of North Brookfield currently makes use of most available locally-controlled tools to mitigate the consequences of natural hazards: zoning regulations, planning, and physical improvements. The Town does not participate in federal programs such as StormReady certification and Community Rating System, and it does plan to research the utility of more public awareness and education programs as a result of this planning process.

North Brookfield has most of the no-cost or low-cost hazard mitigation capabilities in place. Land use zoning, subdivision regulations and an array of specific policies and regulations that include

hazard mitigation best practices, such as limitations on development in floodplains, stormwater management, tree maintenance, etc. North Brookfield also has a limited staff dedicated to hazard mitigation-related work for a community of its size, including an Emergency Management Director, a professionally run Department of Public Works, a Facilities Director, and an unofficial Tree Warden. North Brookfield has several relevant plans in place, including a Comprehensive Emergency Management Plan, and it is working now to update its Master Plan. Not only does North Brookfield have these capabilities in place, but they are also deployed for hazard mitigation, as appropriate. The town also has very committed and dedicated volunteers who serve on Boards, Commissions and Committees and in other volunteer positions. The town collaborates closely with surrounding communities through its Local Emergency Planning Committee and has opted in to fire protection mutual aid agreements through MEMA.

North Brookfield is also an active member community of the Central Massachusetts Regional Planning Commission (CMRPC) and can take advantage of no cost local technical assistance as needed provided by the professional planning staff at CMRPC.

The table below describes existing mitigation protections in North Brookfield. It includes a brief description of each activity as well as a subjective evaluation of its effectiveness and of any need for modifications.

6.1 Existing Protection Matrix

Table 7

Existing Measure	Description	Action	Effectiveness & Recommendations
Participation in National Flood Insurance Program (NFIP)	Provides flood insurance for structures located in flood-prone areas. Also, communities participating in the NFIP have adopted and enforce ordinances, bylaws and regulations that meet or exceed FEMA requirements to reduce the risk of flooding.	North Brookfield stays compliant by enforcing all floodplain regulations (Section 4) in the Town By-Laws. The Town has and will continue to maintain the Town's floodplain maps and review the new FIRM Maps and provided comments on changes as needed, provide residences with all correspondence and maps to all residents impacted by the mapping changes and builders with appropriate building requirements.	Effective North Brookfield should seek to further limit development in the 100-year flood zones. It should continue to score in the Community Rating System (CRS) under NFIP to enable its residents to obtain lower flood insurance rates. North Brookfield should educate its residents about NFIP.
Stormwater Management policy and regulations in place	Planning Boards or Conservation Commissions review projects for consistency with MA DEP standards. This helps ensure adequate on site retention and recharge.	North Brookfield does not have a Stormwater Management Bylaw however, Zoning, Subdivision and Wetlands Regulations have different requirements for Stormwater Management.	Effective No changes recommended

Existing Measure	Description	Action	Effectiveness & Recommendations
Local Open Space and Recreation Plan	<p>Local plan identifying significant natural resources and identifying mechanisms to ensure their protection. Following Mass. Department of Conservation and Recreation guidance for development of OSRPs, this document does not focus on specific hazards.</p> <p>Open Space Plans can provide many tools. Towns must commit to making the land acquisitions and regulatory changes, giving increased attention to preserving undeveloped flood-prone areas and associated lands</p>	North Brookfield's Open Space and Recreation Plan Update was issued in 2007.	<p>Somewhat Effective</p> <p>Plan is expired. North Brookfield should prepare plan update as per Mass. DCR guidance. Where allowable, North Brookfield should use the update to integrate hazard mitigation activities and recommendations.</p>

Existing Measure	Description	Action	Effectiveness & Recommendations
Local wetlands protection bylaw and regulations in place (Mass. Assoc. of Conservation Commissions, 2006 data)	Local bylaws building upon the State's Wetlands Protection Act and Regulations. These add regulatory oversight provisions for development within the jurisdictional buffer zone, adding increased attention to alteration of wetlands and the opportunity to preserve capacity and quality.	North Brookfield does not have a Wetlands Protection Ordinance and Wetlands Protection Regulations	Somewhat effective North Brookfield should examine enhanced development controls at wetlands to sustain natural barriers to flooding
Drainage system maintenance and repair program	Plan to keep municipal drainage facilities (storm drains, culverts, etc.) in good order	North Brookfield performs catch basin cleaning annually, problem locations more frequently	Effective North Brookfield should examine a public education program for residents on storm drain clearance and other best practices
Tree Trimming	Plan to ensure routine maintenance of trees to reduce likelihood of vegetative debris in response to storm events	North Brookfield conducts roadside mowing from April-November to remove juvenile trees. Tree trimming (take-downs and clearing dead branches) takes place as needed.	Effective North Brookfield should work with its electrical utility to coordinate a more systematic tree trimming program
Street Sweeping	Sweep streets to increase stormwater management capacity; capture and dispose of debris appropriately.	All Residential roads swept at least once a year and on an as needed basis.	Very Effective No changes recommended

Existing Measure	Description	Action	Effectiveness & Recommendations
Culvert Maintenance and Replacement	Maintain existing culverts through regular maintenance and (in some cases) beaver controls; replace/expand culverts where needed to allow for adequate stormwater flow.	Culverts are repaired or upgraded on an as needed basis. An inventory of problem culverts is maintained.	Somewhat effective Current efforts are piecemeal and are limited by lack of resources and systematic approach. North Brookfield should develop a policy to prepare for expected climate change related precipitation increase by upsizing culverts, especially in known problematic areas. Seek external financial support. Planning must comply with 2014 Mass. Wetlands Protection Act update; culverts may not be replaced in-kind.
CodeRED System	Emergency warning system that sends voicemail/text/email alerts to residents (text/email alerts are optional).	North Brookfield has recently purchase CodeRED	Effective Continue to actively gain membership in CodeRED while educating the public about the CodeRed system

7.0 MITIGATION STRATEGY

The North Brookfield hazard mitigation planning team developed a list of mitigation strategies (both new and previously identified by local officials) and prioritized them using the criteria described below. This list of factors is broadly derived from FEMA's STAPLE+E feasibility criteria.

7.1 Impact

The team's consideration of each strategy included an analysis of the mitigation impact each can provide, regardless of cost, political support, funding availability, and other constraints. The intent of this step is to separately evaluate the theoretical potential benefit of each strategy to answer the question: If cost were no object, what strategies have the most benefit? Factors considered in this analysis include the number of hazards each strategy helps mitigate (more hazards equal higher impact), the estimated benefit of the strategy in reducing loss of life and property (more benefit equals higher impact) based on the relevant hazard(s) as assessed in Chapter 4, and the geographic extent of each strategy's benefits (other factors being equal, a larger area equals higher impact).

- **High Impact** – Actions that help mitigate several hazards, substantially reduce loss of life and property (including critical facilities and infrastructure), and/or aid a relatively large portion of the community
- **Medium Impact** – Actions that help mitigate multiple hazards, somewhat reduce loss of life and property (including critical facilities and infrastructure), and/or aid a sizeable portion of the community
- **Low Impact** – Actions that help mitigate a single hazard, lead to little or no reduction in loss of life and property (including critical facilities and infrastructure), and/or aid a highly-localized area

7.2 Priority

Following the ranking of each strategy for its mitigation impact, real world considerations were brought back into the analysis to inform the priority ranking process. Factors considered in this step include costs and cost effectiveness (including eligibility and suitability for outside funding), timing, political and public support, and local administrative burden.

Costs and cost effectiveness – In order to maximize the effect of mitigation efforts using limited funds, priority is given to low-cost strategies. For example, regular tree maintenance is a relatively low-cost operational strategy that can significantly reduce the length of time of power outages

during a winter storm. Strategies that have clear and viable potential funding streams, such as FEMA's Hazard Mitigation Grant Program (HMGP), are also given higher priority.

Time required for completion - Projects that are faster to implement, either due to short work duration, current or near-term availability of funds, and/or ease of permitting or other regulatory procedures, are given higher priority.

Political and public support - Strategies that have demonstrated political and/or public support through positive involvement by the public or prioritization in previous regional and local plans and initiatives that were locally initiated or adopted are given higher priority.

Administrative burden – Strategies that are realistically within the administrative capacity of the town and its available support network (CMRPC, North Brookfield local emergency planning committee, etc.) are prioritized. Considerations include grant application requirements, grant administrative requirements (including audit requirements), procurement, and staff time to oversee projects.

- **High Priority** – Strategies that have obvious mitigation impacts that clearly justify their costs and to a large degree can be funded, can be completed in a timely fashion, can be administered effectively, and are locally supported
- **Medium Priority** – Strategies that have some clear mitigation impacts that generally justify their costs and generally can be funded, can be completed in a timely fashion, can be administered effectively, and are locally supported
- **Low Priority** – Strategies that have relatively low mitigation impacts that do not necessarily justify their costs and that may have difficulty being funded, completed in a timely fashion, administered effectively, and locally supported

7.3 Estimated Cost

Each implementation strategy is provided with a rough cost estimate based on available third-party or internal estimates and past experience with similar projects. Each includes hard costs (construction and materials), soft costs (engineering design, permitting, etc.), and where appropriate town staff time (valued at appx. \$25/hour for grant applications, administration, etc.). Projects that already have secured funding are noted. Detailed and current estimates were not generally available, so costs are summarized within the following ranges:

- **Low** – less than \$50,000
- **Medium** – between \$50,000 – \$100,000
- **High** – over \$100,000

Timeline

Each strategy is provided with an estimated length of time it will take for implementation. Where funding has been secured for a project, a specific future date is provided for when completion is expected. However, most projects do not currently have funding and thus it is difficult to know exactly when they will be completed. For these projects, an estimate is provided for the amount of time it will take to complete the project once funding becomes available. Strategies are grouped by 1-2-year timeframe, 3-5-year timeframe, 5+ year timeframe, and ongoing items.

Strategy Types

Mitigation strategies were broken into four broad categories to facilitate local implementation discussions, especially regarding budget considerations and roles/responsibilities:

Structure and Infrastructure Projects - Construct “bricks & mortar” infrastructure and building improvements in order to eliminate or reduce hazard threats, or to mitigate the impacts of hazards. Examples include drainage system improvement, dam repair, and generator installation. Structure and infrastructure improvements tend to have the greatest level of support at the local level, but are highly constrained by funding limits.

Preparedness, Coordination and Response Actions - Ensure that a framework exists to facilitate and coordinate the administration, enforcement and collaboration activities described in this plan. Integrate disaster prevention/mitigation and preparedness into every relevant aspect of town operations, including Police, Fire, EMD, EMS, DPW, Planning Board, Conservation Commission and Board of Selectmen; coordinate with neighboring communities where appropriate. Recommendations in this category tend toward standardizing and memorializing generally-practiced activities.

Education and Awareness Programs - Integrate education and outreach into the community to raise awareness of overall or hazard-specific risk and generate support for individual or community-wide efforts to reduce risk.

Awareness and education seek to affect broad patterns of behavior, essentially altering a culture. Awareness-building activity tends to have a fairly slow effect, although in the end it can provide extraordinary benefits with relatively little cash outlay.

Local Plans and Regulations - Review and propose updates to local bylaws, ordinances and regulations to protect vulnerable resources and prevent further risk to those resources. Formally adopt these updates into the local regulatory framework. Review the effectiveness of past

mitigation projects, programs procedures and policies. Incorporate mitigation planning into master plans, open space plans, capital improvement plans, facility plans, and other planning.

Planning and regulatory activity tends to provide extraordinary benefits with relatively little cash outlay. However, in smaller communities where planning activities are largely the purview of volunteers, outside assistance from the state or regional levels may be required to maximize its benefits. Political support may be difficult to achieve for some planning and regulatory measures, especially those that place new constraints on land use.

In addition to describing action items in each of these categories, for each strategy we also identify what hazard(s) it is intended to address, as described in Chapter 4 of this plan. Each strategy also identifies the lead organization who serves as the primary point of contact for coordinating efforts associated with that item, and identifies potential funding sources for implementation. See Chapter 8 for more information on potential funding.

Town of North Brookfield Mitigation Strategies

OVERALL GOAL: Facilitate activity within the Town of North Brookfield that reduces the loss, and risk of loss, to persons and property

Mitigation Strategy	Hazard(s) Addressed	Who?	Potential Funding Sources	Priority	Impact	Estimated Cost	Timeline
Description		Agencies involved		Political & economic viability: High/Med/Low	Mitigation impact: High/Med/Low	High (\$100k+)/ Med (\$50k- 100k)/ Low (<\$50k)	Time needed to complete
A. Structure & Infrastructure Strategies							
Pursue funding to replace failing box culvert bridge on Route 67 (West Brookfield Road) near intersection of Wine Road	FL, ST, HU	State, Local, DPW	Federal, State, Local	High	High	High	2-3 years
Continually Identify and prioritize capital/structural mitigation projects that are cost-effective and technically feasible (stormwater drainage, dam repairs, vegetative debris management, etc.).	All	Local Departments	Federal, State, Local	High	High	Low	Ongoing
Pursue funding for comprehensive engineering study to locate, asses and replace culvert running through town center, "North South Common Drain". Culvert is believed to run from Reed Ave. along Grove Street. Currently the culvert is known to cause flooding issue in multiple residences and streets. The culvert is undersized and made of mixed materials and sizes.	FL, ST, HU	State, Local, DPW	Federal, State, Local	High	High	High	3-5 years

Continue to seek funds to implement a vegetative debris program (e.g. by acquiring additional equipment), and thereby mitigate risks of stormwater flooding, riverine flooding, winter storm damage, etc., such as through the Central Massachusetts Mosquito Control Project. Possible funding through Capital Improvement Plan.	All	DPW	Federal. State, Local	Medium	High	Medium	1-2 Years
Pursue funding for Town Tree Warden	FL, ST, WF, HU, SS	DPW	State, Local	High	Medium	Medium	1-2 years
Pursue funding to purchase a wood chipper	All	DPW	State Local	High	High	Medium	1 Year
Pursue funding for excavator to support town wide tree trimming and road side drainage issue. Implement roadside drainage priority improvement program	ALL	DPW	Federal, State, local	Medium	High	High	1 Year
Pursue funding to implement town wide tree trimming and removal program	All	DPW	Local	High	High	Low	1 Year
Continue to repair and replace storm water pipes as funds become available. Continue to actively seek stormwater funding.	FL, ST, HU	DPW, MassDOT	State, Local	Medium	High	Medium/High	Ongoing as funds become available
Pursue funding assistance for town wide beaver remedy. Past beaver dam breaches have caused road flooding and closures	DF, FL, ST, OT	All	Local State	High	High	Low	1 Year
Pursue funding to improve drainage issue in the area of Summer Street due to culvert issue	FL, HU, ST	DPW	State Local	Medium	High	Medium	1 Year
Implement town wide roadside edging program	FL, ST, HU	DPW	State, Local	Medium	Medium	Medium	1-2 years
Pursue funding for comprehensive engineering study to improve drainage at the intersection of Chestnut St. and Summer St.	FL, ST	DPW	Federal, State Local	Medium	Medium	High	1 Year

Continue to pursue funds to complete projects that will mitigate flooding on Bradshaw Street, Conroy Ave. and Willow Ave.	FL, ST, HU	DPW, MassDOT	State, Local	Medium	Medium	Medium/High	2-3 Years
Continually maintain and remove debris from culverts as needed town wide	FL, HU, ST	DPW	Local	Low	Low	High	Ongoing
Investigate feasibility of reopening underground stream that flows through town center to create river walk	FL, ST	All	Federal, State, Local	Low	Medium	High	2-3 Years
Pursue funding to repair or remove Muschopauge Pond Dam, the dam is in failure per the MA Office of Dam Safety	DF, ST, FL	State	Federal, State	Medium	Medium	High	2-3 Years
Pursue funding to integrate heating system at High School to make use as a shelter	All	All	Federal, State, Local	High	High	Medium	1-2 years
Pursue funding to upgrade generator at High School to support facility as shelter	All	All	Federal, State, Local	Medium	High	High	3-5 years
Pursue funding to install generator in town senior center	All	All	Federal, State, Local	Low	High	High	3-5 years
Pursue funding for road improvement/upgrades to "The Path" to the High School for use as a secondary egress to school during periods of shelter	All	DPW	State, Local	Low	Low	High	1 Year
B. Preparedness, Coordination & Response Action Strategies							
Develop local contact/contractor list for assistance with fuel supply, debris removal etc.	All	Fire, Police, DPW	Local	Medium	Medium	Low	Ongoing
Pursue funding for increased fuel storage tanks at DPW supporting all departments in town	All	All	State, Local	Low	Low	High	1-2 Years

Continue to sweep streets at least once per year to increase stormwater management capacity; capture and dispose of properly (currently budgeted).	ST, SS, FL, HU	Highway, DOT	Local, State	High	High	Low	Annually
Continue to properly clean, at least annually, or more often as required, all stormwater structures and basins (currently budgeted).	ST, SS, FL, HU	Highway	Local	High	High	Low	Annually
Investigate feasibility of replacing batteries on warning siren to utilize existing system. Develop a coding system for siren	All	All	State, Local	Medium	High	Low	1 Year
Continue to gain membership in CodeRed system. Investigate potential to bring Warning Siren back online. Ongoing use of social media, town webpages and other communication methods. Post generator safety and use info on social media. Maintain internal instant messaging system, allowing for rapid response of emergency personnel	All	All local departments	Local	High	High	low	Ongoing
Evaluate and repair dams as identified by the Office of Dam Safety.	DF, ST, FL	State	State	High	High	Low	Ongoing
Continue building a strong relationship with utilities, i.e. National Grid. Currently very responsive, including sending appropriate resources to downed poles and wires through picture messages.	All	Local, State, Utilities	State, Local	Medium	High	Low	Ongoing
Continue to utilize hazard warning systems and notifications: social media, town webpages, Code Red, Warning Siren, and other communication methods. Maintain internal instant messaging system, allowing for rapid response of emergency personnel	All	Local	Local	High	High	Low	Ongoing
Actively enforce and comply with the state building codes, promote successful working relationship between Fire Marshall and Building Inspector	All	Building Dept., Fire, PB, CC, ZBA	Local	High	High	Low	Ongoing

Actively enforce and comply with the Massachusetts Wetlands Protection Act. Seek to implement a local wetlands bylaw.	FL, ST	CC	Local	High	High	Low	Ongoing
Continue to support the regional functions that the Rutland Fire Department provides to other communities. This requires increased cooperative efforts for Unified Command and adequate infrastructure resources.	All	Fire, Police, DPW	State, Local	High	High	Medium	Ongoing
C. Education & Awareness Strategies							
Continually educate all segments of the community about hazard mitigation and the impacts that disasters can have on the community through social media, brochures, School Fall Festival, sign boards and mailings. Also, educate on water conservation methods	All	Fire, Police, DPW, Local Government	Local, State, Federal	Medium	Medium	Low	Continued efforts
Continue to engage with the Local Emergency Planning Committee (LEPC) and Central Mass Regional Homeland Security Council (CMRHSC) Fire District 7 and other stakeholders for increased communication and coordination between local, regional, state, and federal agencies regarding disasters and emergencies.	All	Fire, Police, DPW, Local Government	Local	High	High	Low	Continued efforts
Promote available educational material (state/federal) especially to students, regarding disasters at measures they can take to limit risks.	All	Fire, Police, School	Local, State, Federal	Medium	High	Low	Yearly
Pursue educational opportunities in regards to grant writing. Hold regional workshop about Hazard Mitigation Grant Writing	All	Fire, Police, DPW	Local	Low	High	Low	Ongoing
Utilize website, fund mailings, and promote the annual Open House as means of communication about Fire Safety.	WF, DR	Fire	Local	Low	Low	Low	Ongoing
Develop educational materials for residents about protecting wetlands	DR, WF, ST, HU	Con Comm	Local	Low	Low	Low	1 year

D. Local Planning & Regulatory Strategies							
Continually share information on a regional basis about successful hazard mitigation planning and programs. Create a feedback loop to improve pre-disaster planning by establishing a formal post-disaster assessment process.	All	EMD, REPC, State	Local, State, Federal	Medium	Low	Low	1-2 Years
Monitor implementation of the Hazard Mitigation Plan and update five years after approval of plan	All	EMD	Local, Federal	High	High	Low	1 Year
Incorporate hazard mitigation into local and regional plans such as, Master Plan, land use, transportation, Open Space and Recreation Plan and Capital Improvement Plans	All	All Town Departments, REPC, PDA	Local, State	High	High	Low	Ongoing
Investigate feasibility of membership into Central Massachusetts Mosquito Control Project	All	All	Local	Low	High	Low	Ongoing
Expand the use of the Capital Improvement Program. Encourage the Committee to look at hazard mitigation in their long-term planning for improvements.	All	Capital Improvement Committee	Local, State, Federal	High	High	Medium	Ongoing
Consider acquiring and preserving properties which will result in mitigating hazards.	FL, ST	CC	Local, State, Federal, Nonprofit Agencies	Low	Medium	High	Ongoing
Encourage the adoption of underground utility requirements in local subdivision regulations and retrofitting of existing infrastructure.	All	Planning Department	Local, State	Medium	Medium	Low	1 Year
Continually Integrate hazard mitigation into subdivision, site plan review, 40B review, and other zoning reviews. In particular require the consideration of downstream flooding impacts caused by new projects. Work on model bylaw language to reduce the amount of impervious coverage and increase opportunities for recharge and retention of stormwater.	FL, ST, HU	Planning Department	Local, State	Medium	Medium	Low	1 Year

Maintain Unified Incident Command program, continue training local officials in ICS	All	All Town Departments	Local, State, Federal	Medium	Medium	Low	Ongoing
Continue to Inventory shelter supplies and emergency resources, identify resources that are available at any shelters and if the shelters would be impacted by an emergency. This would help ensure suitable shelters are available for different types of natural hazards.	All	EMD	Local, State, Federal	Low	Low	Low	Yearly
Study the possibility of creating a regional shelter with a neighboring town. This would help limit the expense of maintaining separate shelters when towns have a limited budget.	All	EMD, neighboring towns	Local, State	Medium	Medium	Low	1--2 Years
Create a Road Bylaw, ensuring new development will have roads able to handle emergency vehicles and proper drainage infrastructure is built	SS, ST, FL	Planning Department	Local	High	High	Low	1 Year
Continue to actively enforce and comply with State Building Code Requirements, ensure proper certification for inspectors	All	Planning Department	Local	High	Medium	Low	Ongoing
Develop a Local Wetlands Bylaw	DR, FL, HU	Con Comm	Local	Low	Medium	Low	1-2 years
Continue to find funds to update the Hazard Mitigation Plan update every five years	All	Fire, Police, DPW, Planning, Con Comm	Local	High	Medium	Low	ongoing
Continue to develop earth removal and reclamation bylaws to ensure prevention of landslides and redirection of natural flood plains and water ways	All	Planning Board	Local	Medium	Low	Low	Ongoing
Update Open Space and Recreation Plan (2017) and be sure to include findings and goals from the Hazard Mitigation Plan Update	All	Planning, Con Comm, BOH, DPW	Federal, State, Local	Medium	Medium	Low	3-5 years

‘Hazards Addressed’ abbreviations:

DF	Dam Failure	DR	Drought
EQ	Earthquake	FL	Flooding
HU	Hurricane	OT	Other
SS	Severe Snowstorm/Ice storm/Nor’easter	ST	Severe Thunderstorm/Wind/Tornado
WF	Wildfire/Brushfire	XT	Extreme Temperatures

8. PLAN ADOPTION, IMPLEMENTATION, AND MAINTENANCE

8.1 Plan Adoption

A public meeting was held on May 14, 2019 in order detail the planning process to date and to solicit comments and feedback from the public on the draft North Brookfield Hazard Mitigation Plan then being finalized. The draft plan was provided to the town for distribution and posted on CMRPC's website from May 16, 2019 to May 31, 2019 for public review and input. The Plan was then submitted to the Massachusetts Emergency Management Agency (MEMA) and the Federal Emergency Management Agency (FEMA) for their review. Upon receiving conditional approval of the plan by FEMA, the final plan was presented to the Town of North Brookfield Board of Selectmen and adopted on September 3, 2019.

8.2 Plan Implementation

The implementation of this plan began upon its formal adoption by the Board of Selectmen and approval by MEMA and FEMA. Those town departments and boards responsible for ensuring the development of policies, ordinance revisions, and programs as described in Sections 5 and 6 of this plan will be notified of their responsibilities immediately following approval. The Hazard Mitigation Team will oversee the implementation of the plan.

Incorporation with Other Planning Documents

The Town of North Brookfield has taken steps to implement findings from the 2012 Hazard Mitigation Plan into the following policy, programmatic areas and plans: the FFY18 Community Development Strategy, the 2015 East side Neighborhood Infrastructure Planning Project, Downtown Development Committee, Town Center Park Improvement Project, Complete Streets Tier 2, and the initial stages of updating the Master Plan.

Existing plans, studies, reports and municipal documents were incorporated throughout the planning process. This included a review and incorporation of significant information from the following key documents:

- ***North Brookfield Open Space and Recreation Plan Update 2007*** – This Plan was used to identify the natural context within which mitigation planning would take place. This proved useful insofar as it identified water bodies, rivers, streams, infrastructure components (i.e. water and sewer, or the lack thereof), as well as population trends. This was incorporated to ensure that the Town's mitigation efforts would be sensitive to the surrounding environment. It should be noted that this plan expired in 2013 and will need to be updated.

- ***North Brookfield Zoning Bylaw*** –Zoning was used to gather and identify those actions that the town is already taking that are reducing the potential impacts of a natural hazard (i.e. floodplain regulations) to avoid duplicating existing successful efforts.
- ***North Brookfield Master Plan*** – The Town last completed a Master Plan in 2007. We encourage the Master Plan committee to include the recommendations provided by the North Brookfield Local Hazard Mitigation Team from this Plan be incorporated into the next North Brookfield Master Plan.
- ***Massachusetts State Hazard Mitigation Plan (2013+2018)*** - These plans were used to ensure that the town's HMP was consistent with the State's Plan.

After the North Brookfield Hazard Mitigation Plan has been approved by both FEMA and the local government, links to the plan will be emailed to all town staff, boards, and committees, with a reminder to review the plan periodically and work to incorporate its contents, especially the action plan, into other planning processes and documents. In addition, during annual monitoring meetings for the Hazard Mitigation Plan implementation process, the Hazard Mitigation Team will review whether any of these plans are in the process of being updated. If so, the Hazard Mitigation Team will remind people working on these plans, policies, etc., of the Hazard Mitigation plan, and urge them to incorporate the Hazard Mitigation plan into their efforts. The Hazard Mitigation Team will also review current town programs and policies to ensure that they are consistent with the mitigation strategies described in this plan. The Hazard Mitigation Plan will also be incorporated into updates of the town's Comprehensive Emergency Management Plan.

8.3 Plan Monitoring and Evaluation

The town's Emergency Management Director will call meetings of all responsible parties to review plan progress as needed, based on occurrence of hazard events. The public will be notified of these meetings in advance through a posting of the agenda at Town Hall. Responsible parties identified for specific mitigation actions will be asked to submit their reports in advance of the meeting.

Meetings will involve evaluation and assessment of the plan, regarding its effectiveness at achieving the plan's goals and stated purpose. The following questions will serve as the criteria that is used to evaluate the plan:

Plan Mission and Goal

- Is the Plan's stated goal and mission still accurate and up to date, reflecting any changes to local hazard mitigation activities?
- Are there any changes or improvements that can be made to the goal and mission?

Hazard Identification and Risk Assessment

- Have there been any new occurrences of hazard events since the plan was last reviewed? If so, these hazards should be incorporated into the Hazard Identification and Risk Assessment.
- Have any new occurrences of hazards varied from previous occurrences in terms of their extent or impact? If so, the stated impact, extent, probability of future occurrence, or overall assessment of risk and vulnerability should be edited to reflect these changes.
- Is there any new data available from local, state, or Federal sources about the impact of previous hazard events, or any new data for the probability of future occurrences? If so, this information should be incorporated into the plan.

Existing Mitigation Strategies

- Are the current strategies effectively mitigating the effect of any recent hazard events?
- Has there been any damage to property since the plan was last reviewed?
- How could the existing mitigation strategies be improved upon to reduce the impact from recent occurrences of hazards? If there are improvements, these should be incorporated into the plan.

Proposed Mitigation Strategies

- What progress has been accomplished for each of the previously identified proposed mitigation strategies?
- How have any recently completed mitigation strategies affected the town's vulnerability and impact from hazards that have occurred since the strategy was completed?
- Should the criteria for prioritizing the proposed mitigation strategies be altered in any way?
- Should the priority given to individual mitigation strategies be changed, based on any recent changes to financial and staffing resources, or recent hazard events?

Review of the Plan and Integration with Other Planning Documents

- Is the current process for reviewing the Hazard Mitigation Plan effective? Could it be improved?
- Are there any town plans in the process of being updated that should have the content of this Hazard Mitigation Plan incorporated into them?
- How can the current Hazard Mitigation Plan be better integrated with other town planning tools and operational procedures, including the zoning bylaw, the Comprehensive Emergency Management Plan, and the Capital Improvement Plan?

Following these discussions, it is anticipated that the planning team may decide to reassign the roles and responsibilities for implementing mitigation strategies to different town departments and/or revise the goals and objectives contained in the plan. The team will review and update the

Hazard Mitigation Plan every five years.

Public participation will be a critical component of the Hazard Mitigation Plan maintenance process. The Hazard Mitigation Team will hold all meetings in accordance with Massachusetts open meeting laws and the public invited to attend. The public will be notified of any changes to the Plan via the meeting notices board at Town Hall, and copies of the revised Plan will be made available to the public at Town Hall.

8.4 Potential Federal and State Funding Sources

Federal Funding Sources

The FEMA web pages identify a number of funding opportunities. Please refer to <https://www.fema.gov/grants>. Some programs are described briefly below:

Hazard Mitigation Assistance

The HMA grant programs provide funding opportunities for pre- and post-disaster mitigation. While the statutory origins of the programs differ, all share the common goal of reducing the risk of loss of life and property due to Natural Hazards. Brief descriptions of the HMA grant programs can be found below. For more information on the individual programs, or to see information related to a specific Fiscal Year, please click on one of the program links.

Hazard Mitigation Grant Program (HMGP)

HMGP assists in implementing long-term hazard mitigation measures following Presidential disaster declarations. Funding is available to implement projects in accordance with State, Tribal, and local priorities. Please refer to: <http://www.fema.gov/hazard-mitigation-grant-program> for additional information.

HMGP funds may be used to fund projects that will reduce or eliminate the losses from future disasters. Projects must provide a long-term solution to a problem, for example, elevation of a home to reduce the risk of flood damages as opposed to buying sandbags and pumps to fight the flood. In addition, a project's potential savings must be more than the cost of implementing the project. Funds may be used to protect either public or private property or to purchase property that has been subjected to, or is in danger of, repetitive damage. Examples of projects include, but are not limited to:

- Acquisition of real property for willing sellers and demolition or relocation of buildings to convert the property to open space use
- Retrofitting structures and facilities to minimize damages from high winds, earthquake, flood, wildfire, or other natural hazards
- Elevation of flood prone structures

- Development and initial implementation of vegetative management programs
- Minor flood control projects that do not duplicate the flood prevention activities of other Federal agencies
- Localized flood control projects, such as certain ring levees and floodwall systems, that are designed specifically to protect critical facilities
- Post-disaster building code related activities that support building code officials during the reconstruction process

Pre-Disaster Mitigation Grant Program (PDM)

The PDM Program, authorized by Section 203 of the Robert T. Stafford Disaster Relief and Emergency Assistance Act, is designed to assist States, U.S. Territories, Federally-recognized tribes, and local communities in implementing a sustained pre-disaster natural hazard mitigation program. The goal is to reduce overall risk to the population and structures from future hazard events, while also reducing reliance on Federal funding in future disasters. This program awards planning and project grants and provides opportunities for raising public awareness about reducing future losses before disaster strikes. Please refer to <http://www.fema.gov/pre-disaster-mitigation-grant-program> for additional information.

Flood Mitigation Assistance (FMA)

Flood Mitigation Assistance (FMA) provides funds on an annual basis so that measures can be taken to reduce or eliminate risk of flood damage to buildings insured under the National Flood Insurance Program. Please refer to the FMA website: <http://www.fema.gov/flood-mitigation-assistance-grant-program>.

Three types of FMA grants are available to States and communities:

- **Planning Grants** to prepare Flood Mitigation Plans. Only NFIP-participating communities with approved Flood Mitigation Plans can apply for FMA Project grants
- **Project Grants** to implement measures to reduce flood losses, such as elevation, acquisition, or relocation of NFIP-insured structures. States are encouraged to prioritize FMA funds for applications that include repetitive loss properties; these include structures with 2 or more losses each with a claim of at least \$1,000 within any ten-year period since 1978.
- **Technical Assistance Grants** for the State to help administer the FMA program and activities. Up to ten percent (10%) of Project grants may be awarded to States for Technical Assistance Grants

Disaster Assistance

Disaster assistance is money or direct assistance to individuals, families and businesses in an area whose property has been damaged or destroyed and whose losses are not covered by insurance. It is meant to help with critical expenses that cannot be covered in other ways. This assistance is not intended to restore damaged property to its condition before the disaster.

While some housing assistance funds are available through our Individuals and Households Program, most disaster assistance from the Federal government is in the form of loans administered by the Small Business Administration.

Disaster Assistance Available from FEMA

In the event of a Declaration of Disaster, assistance from FEMA is grouped in 3 categories:

- A. Housing Needs
- B. Other than Housing Needs
- C. Additional Services

A. Housing Needs

- **Temporary Housing** (a place to live for a limited period of time): Money is available to rent a different place to live, or a government provided housing unit when rental properties are not available.
- **Repair**: Money is available to homeowners to repair damage from the disaster to their primary residence that is not covered by insurance. The goal is to make the damaged home safe, sanitary, and functional.
- **Replacement**: Money is available to homeowners to replace their home destroyed in the disaster that is not covered by insurance. The goal is to help the homeowner with the cost of replacing their destroyed home.
- **Permanent Housing Construction**: Direct assistance or money for the construction of a home. This type of help occurs only in insular areas or remote locations specified by FEMA, where no other type of housing assistance is possible.

B. Other than Housing Needs

Money is available for necessary expenses and serious needs caused by the disaster, including:

- Disaster-related medical and dental costs.
- Disaster-related funeral and burial cost.
- Clothing; household items (room furnishings, appliances); tools (specialized or protective clothing and equipment) required for your job; necessary educational materials (computers, school books, supplies)
- Fuels for primary heat source (heating oil, gas).
- Clean-up items (wet/dry vacuum, dehumidifier).
- Disaster damaged vehicle.
- Moving and storage expenses related to the disaster (moving and storing property to avoid additional disaster damage while disaster-related repairs are being made to the home).

- Other necessary expenses or serious needs as determined by FEMA.
- Other expenses that are authorized by law.

C. Additional Services

- Crisis Counseling
- Disaster Unemployment Assistance
- Legal Services
- Special Tax Considerations

Assistance to Firefighters Grants

The FEMA Assistance to Firefighters Grants (AFG) program provides funds to equip and train emergency personnel to recognized standards, enhance operations efficiencies, foster interoperability, and support community resilience. Under AFG, funds may be available for equipment, vehicles and/or training that can be used to mitigate and/or respond to wildfire-related hazards. AFG also has a Fire Prevention and Safety (FPS) component which funds public outreach programs and prevention activities, which can emphasize wildfire mitigation. Please refer to: <https://www.fema.gov/welcome-assistance-firefighters-grant-program>.

Disaster Loans Available from the Small Business Administration

The U.S. Small Business Administration (SBA) can make federally subsidized loans to repair or replace homes, personal property or businesses that sustained damages not covered by insurance. The Small Business Administration can provide three types of disaster loans to qualified homeowners and businesses:

- Home disaster loans to homeowners and renters to repair or replace disaster- related damages to home or personal property (please refer to: <https://www.disasterassistance.gov/get-assistance/forms>)
- Business physical disaster loans to business owners to repair or replace disaster- damaged property, including inventory, and supplies (please refer to: <https://www.sba.gov/loans-grants/see-what-sba-offers/sba-loan-programs/disaster-loans/disaster-loan-data>); and
- Economic injury disaster loans, which provide capital to small businesses and to small agricultural cooperatives to assist them through the disaster recovery period (please refer to): <https://www.sba.gov/funding-programs/disaster-assistance>

For many individuals, the SBA disaster loan program is the primary form of disaster assistance.

Disaster Assistance from Other Organizations and Entities

The website <https://www.disasterassistance.gov/> is a secure, user-friendly U.S. Government web portal that consolidates disaster assistance information in one place. If you need assistance following a presidentially declared disaster— which has been designated for individual assistance— you can now go to DisasterAssistance.gov to register online. Local resource information to help keep citizens safe during an emergency is also available. Currently, 17 U.S. Government agencies, which sponsor almost 60 forms of assistance, contribute to the portal.

DisasterAssistance.gov speeds the application process by feeding common data to multiple online applications. Application information is shared only with those agencies you identify and is protected by the highest levels of security. DisasterAssistance.gov will continue to expand to include forms of assistance available at the federal, state, tribal, regional and local levels, with a projected completion date of 2014. Through www.DisasterAssistance.gov you have the ability to:

- Determine the number and forms of assistance you may be eligible to receive by answering a brief series of questions or start the individual assistance registration process immediately
- Apply for FEMA assistance and be referred to the Small Business Administration for loans through online applications
- Choose to have your Social Security benefits directed to a new address
- Access your federal student loan account information
- Receive referral information on forms of assistance that do not yet have online applications
- Access a call center in the event you do not have Internet access to ensure you can still register for assistance
- Check the progress and status of your applications online.
- Identify resources and services for individuals, families and businesses needing disaster assistance during all phases of an emergency situation
- Identify resources to help locate family members and pets
- Access assistance from the Department of State if you are affected by a disaster while traveling abroad
- Find information on disaster preparedness and response

Federal Funding Summary Table

The following is a summary of the programs which are the primary source for federal funding of hazard mitigation projects and activities in Massachusetts:

Table 8

Program	Type of Assistance	Availability	Managing Agency	Funding Source
National Flood Insurance Program (NFIP)	Pre-Disaster Insurance	Any time (pre & post disaster)	DCR Flood Hazard Management Program	Property Owner, FEMA
Community Rating System (CRS) (Part of the NFIP)	Flood Insurance Discounts	Any time (pre & post disaster)	DCR Flood Hazard Management Program	Property Owner
Flood Mitigation Assistance (FMA) Program	Cost share grants for pre- disaster planning & projects	Annual pre-disaster grant program	MEMA	75% FEMA/ 25% non- federal
Hazard Mitigation Grant Program (HMGP)	Post-disaster Cost-Share Grants	Post disaster program	MEMA	75% FEMA/ 25% non- federal
Pre-Disaster Mitigation Program	National, competitive grant program for projects & planning	Annual, pre-disaster mitigation program	MEMA	75% FEMA/ 25% non- federal
Severe Repetitive Loss	For SRL structures insured under the NFIP.	Annual	MEMA	Authorized up to \$40 million for each fiscal year 2005 through 2009
Assistance to Firefighters Grants (AFG)	Training & equipment for wildfire-related hazards	Annual	FEMA	FEMA
Small Business Administration (SBA) Mitigation Loans	Pre- & Post- disaster loans to qualified applicants	Ongoing	MEMA	Small Business Administration
Public Assistance	Post-disaster aid to state & local governments	Post Disaster	MEMA	FEMA/ plus a non-federal share

For a list of additional potential funding sources, please refer to Table 17-7 on Pages 545-8 of the 2013 State Hazard Mitigation Plan:

<http://www.mass.gov/eopss/docs/mema/resources/plans/state-hazard-mitigation-plan/massachusetts-state-hazard-mitigation-plan.pdf>.

State Funding Sources

The Commonwealth of Massachusetts provides matching FEMA assistance. This means that, following Presidential disaster declarations, the state may contribute a portion of the 25% non-federal share for federal Infrastructure Support funds. Since 1991, the state has contributed nearly \$20 million to match FEMA's funding following declared Presidential disasters. Other State funding sources include the following:

Special Appropriations and Legislative Earmarks

Although there is no separate state disaster relief fund in Massachusetts, the state legislature may enact special appropriations for those communities sustaining damages following a natural disaster that are not large enough for a Presidential disaster declaration. Since 1991, Massachusetts has issued 20 major disaster declarations. Additionally, individual legislators may seek specific project funding for projects through the legislative budgeting and appropriations process.

State Revolving Fund

This statewide loan program through the Executive Office of Environmental Affairs assists communities in funding local stormwater management projects which help to minimize and/or eliminate flooding in poor drainage areas.

Chapter 90 Funds

This statewide program reimburses communities for roadway projects, such as resurfacing and related work and other work incidental to the above such as preliminary engineering including State Aid/Consultant Design Agreements, right-of-way acquisition, shoulders, side road approaches, landscaping and tree planting, roadside drainage, structures (including bridges), sidewalks, traffic control and service facilities, street lighting (excluding operating costs), and for such other purposes as the Department may specifically authorize. Maintaining and upgrading critical infrastructure and evacuation routes is an important component of hazard mitigation.

MVP Program

Launched in 2017, the Municipal Vulnerability Preparedness (MVP) program provides support for cities and towns to begin or to supplement the process of planning for resiliency. The state awards communities with funding to complete vulnerability assessments and to develop action-oriented resiliency plans, with a special emphasis on the impacts climate change. Communities will be able to define extreme weather and natural and climate related hazards, identify existing and future vulnerabilities and strengths, develop and prioritize actions for the community, and identify opportunities to take action to reduce risk and build resilience. MVP activities can easily be integrated with updates to the local hazard mitigation plan. More information is available online here: www.mass.gov/eea/air-water-climate-change/climate-change/massachusetts-global-warming-solutions-act/municipal-vulnerability-preparedness-program.html

Community Development Block Grant (CDBG)

CDBG remains the principal source of revenue for communities to use in identifying solutions to address physical, economic, and social deterioration in lower-income neighborhoods and communities. While primarily a housing and community development program administered through the Executive Office of Housing and Community Development (EOHCD), the program can also fund the rehabilitation of municipal buildings such as town halls, which in many cases, also serve as Emergency Operations Centers for their communities.

State Land Acquisition & Conservation Program

Through the Massachusetts Executive Office of Energy and Environmental Affairs, this annual program purchases private property for open space, wetland protection and floodplain preservation purposes. For instance, in 1998, the state set an ambitious goal of protecting 200,000 acres of open space in the Commonwealth by 2010. In August 2001, less than three years later, the state announced that the Commonwealth and its land protection partners had reached the halfway mark in achieving that goal - 100,000 acres. Updated information may be found on the website of the Executive Office of Energy and Environmental Affairs Open Space Protection program at: <https://www.mass.gov/orgs/executive-office-of-energy-and-environmental-affairs>

Dams & Levees Program

EEA funds projects for the repair and removal of dams, levees, seawalls, and other forms of inland and coastal flood control. In FY 2016, the maximum award for any one application was \$1,000,000 for dams and levees and \$3,000,000 for seawalls and other coastal foreshore protection. A minimum financial match of 25% of total funds requested is required. For additional information, please refer to <http://www.mass.gov/eea/waste-mgmt-recycling/water-resources/preserving-water-resources/water-laws-and-policies/water-laws/draft-regs-re-dam-and-sea-wall-repair-or-removal-fund.html>.

Major Flood Control Projects

The state provides half of the non-federal share of the costs of major flood control projects developed in conjunction with the U.S. Army Corps of Engineers. This program is managed by DCR.

Flood Control Dams

Natural Resource Conservation Service (NRCS), manages the Flood Control Dams Program, (PL566), which funds states in the operation and maintenance of the 25 PL566 flood control dams located on state property. This program also includes technical assistance and other smaller services from the NRCS and partners.

Flood Hazard Management Program Staff Funding

The state provides the 25% non-federal share for FEMA's funding under the Community

Assistance Program - State Support Services Element (CAP-SSSE). CAP-SSSE funding, and the state match supports the Flood Hazard Management Program (FHMP) within the Department of Conservation and Recreation. The FHMP works with FEMA to coordinate the National Flood Insurance Program throughout Massachusetts, providing technical assistance to participating communities and professionals.

MassWorks Infrastructure Program

The MassWorks Infrastructure Program provides a one-stop shop for municipalities and other eligible public entities seeking public infrastructure funding to support economic development and job creation. Although not specific to natural hazards per se, these infrastructure enhancements under MassWorks could also address identified needs for hazard mitigation. The MassWorks Infrastructure Program is administered by the Executive Office of Housing and Economic Development, in cooperation with the Department of Transportation and Executive Office for Administration & Finance. Please refer to:

<http://www.mass.gov/hed/economic/eohed/pro/infrastructure/massworks/> for additional information.

Weatherization Assistance Program

The Weatherization Assistance Program is funded each year by the U.S. Department of Energy's Office of Energy Efficiency & Renewable. The extent of services to be provided depends on available funding. The program is intended to help low-income homeowners and renters lower their energy cost and reduce the potential impact from severe weather events. Weatherization service agencies throughout Massachusetts run the Weatherization Assistance Program. Please refer to <http://energy.gov/eere/wipo/weatherization-assistance-program> for additional information.

APPENDICES

- A. Maps**
- B. Public Survey Results**
- C. Planning Team & Public Meetings**
- D. Glossary**
- E. 2012/2018 Priorities Comparison**