

DATA COLLECTION UPDATES

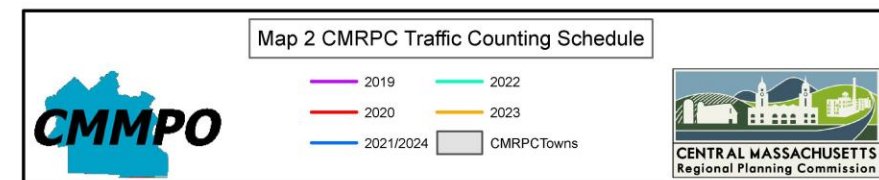
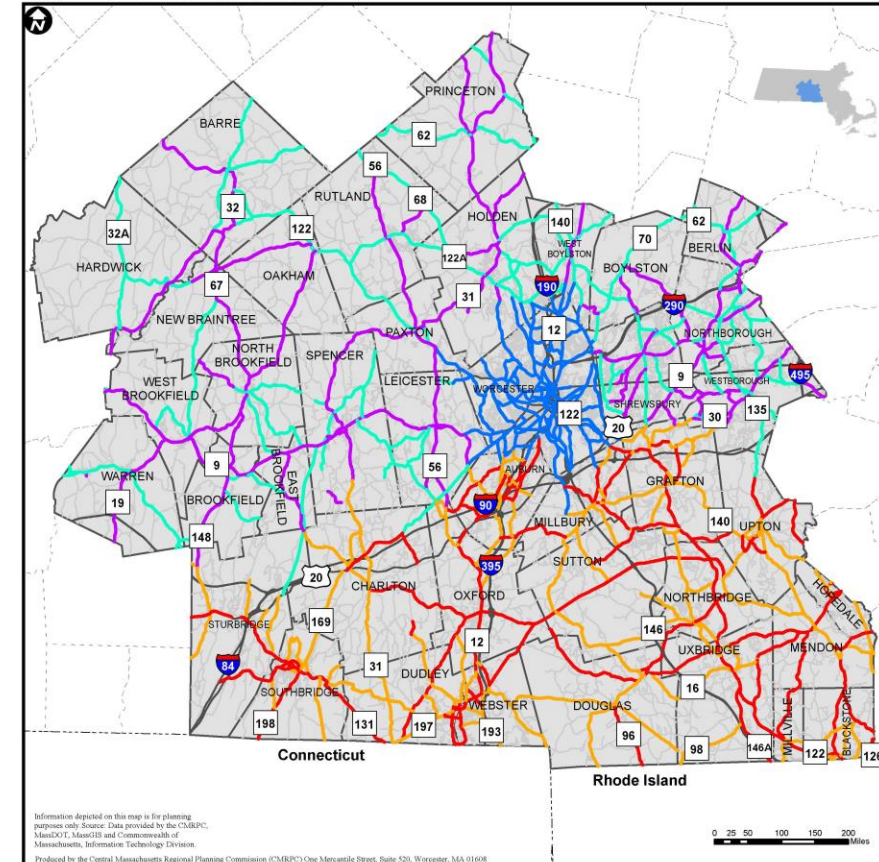
Central Massachusetts Regional Planning
Commission (CMRPC)



Traffic Counting

- Collect vehicle volume, speed, and axel configuration
- 9 ATRS, 1 Radar Recorder, 2 TMC cameras
- Count Federal-aid eligible roads throughout the region and provide local technical assistance as requested
- All data is upload to the MassDOT MS2 system
- Approximately 300 locations per year based on a rotating schedule
- Traffic counts are used in everything from corridor profile studies, TIP scoring and signal warrant analysis

Map 2 CMRPC Traffic Counting Schedule



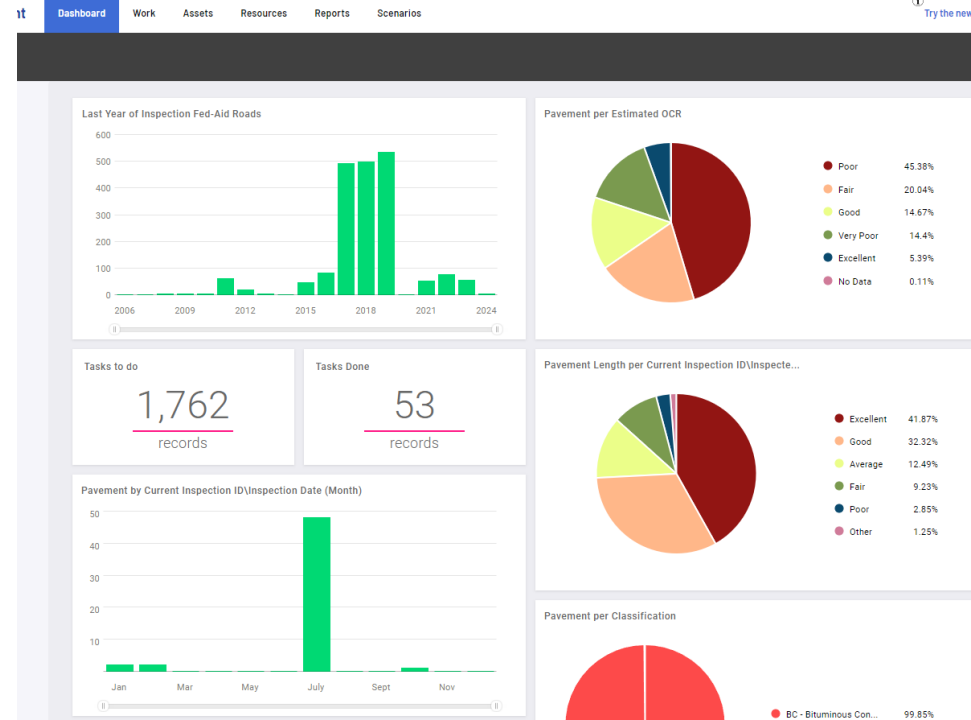
Culverts

- Assessed using North Atlantic Aquatic Connectivity (NAACC) protocols.
- Collects basic crossing data, inlet & outlet dimensions, and additional conditions like substrate, physical barriers, water depth/velocity, internal structures.
- Data collected is uploaded to NAACC Data Center and is scored to determine the aquatic passability of the culvert. These scores can help a town identify vulnerable culverts for upgrade/replacement for both structural and environmental benefits.
- Success story: Shrewsbury completed culvert training and have assessed nearly all culverts in their town, allowing them to identify vulnerable culverts to identify for grants and funding opportunities.
- CMRPC Work:
 - Staff assessments: West Brookfield, Sturbridge, Berlin
 - Training opportunities
 - Technical Expertise: Assisted Town of Warren to complete DER Culvert Replacement Municipal Assistance (CRMA) Grant Application



Pavement

- Windshield survey of Federal-Aid eligible roads for distress
- All data is entered into the CMRPC pavement management software for analysis (OpenGov)
 - o Overall Condition Index
 - o Budget Scenarios
- Pavement survey segments serve as the base for all "management systems analysis"
- Local pavement management contracts with communities upon request



Pedestrian and Bike Facilities

- Walking survey of pedestrian and bike infrastructure including sidewalks, curb ramps, crosswalks, pedestrian related signage and bike parking locations along Federal-Aid eligible roads.
- Local plans completed for towns upon request such as complete street prioritization plans, local sidewalk prioritization plans and walk safety audits
- Bike parking inventory is being completed in partnership with the City of Worcester

Drones

- Three FAA Part 107 Pilots
- Operate DJI Mavic Pro 2
- What we do
 - Imagery, Before and Afters, Orthomosaic Maps, 3D Models, Corridor Maps
- What we want to do
 - Pavement analysis for culverts, soil volume measurements, anything advance technique that can benefit for the CMRPC and our communities




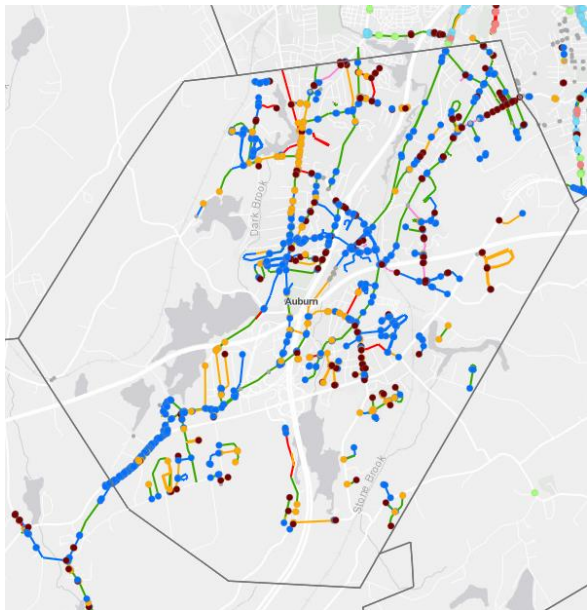
PROJECTS AND USE CASES

Vernon Hill Street School



PROJECTS AND USE CASES

Pedestrian Inventory




Town of Auburn

LOCAL SIDEWALK PRIORITIZATION PLAN

March 2024

Prepared by the



CENTRAL MASSACHUSETTS
Regional Planning Commission

Central Massachusetts Regional Planning Commission
One Mercantile Street, Suite 520
Worcester, MA 01608



WALK AUBURN

INTRODUCING A NEW ONLINE AGE FRIENDLY PEDESTRIAN TOOL

DESIGN YOUR OWN WALKING PATH

As part of Auburn's Age Friendly Initiative, we have created a proposed dashboard helps commuters find new pedestrian paths using a web map. It provides an overview of Auburn's routes, including age-friendly options, allowing users to plan and enjoy safe, scenic walks.



- Zoom In/Out
- Default View
- My Location
- Directions
- Bookmark
- Draw
- Basemap and Layer List
- Legends
- Print
- Measure

ACCESS HERE: [HTTPS://TINYURL.COM/2U9JCNRJ](https://tinyurl.com/2U9JCNRJ)



AUBURN
MASSACHUSETTS



CENTRAL MASSACHUSETTS
Regional Planning Commission