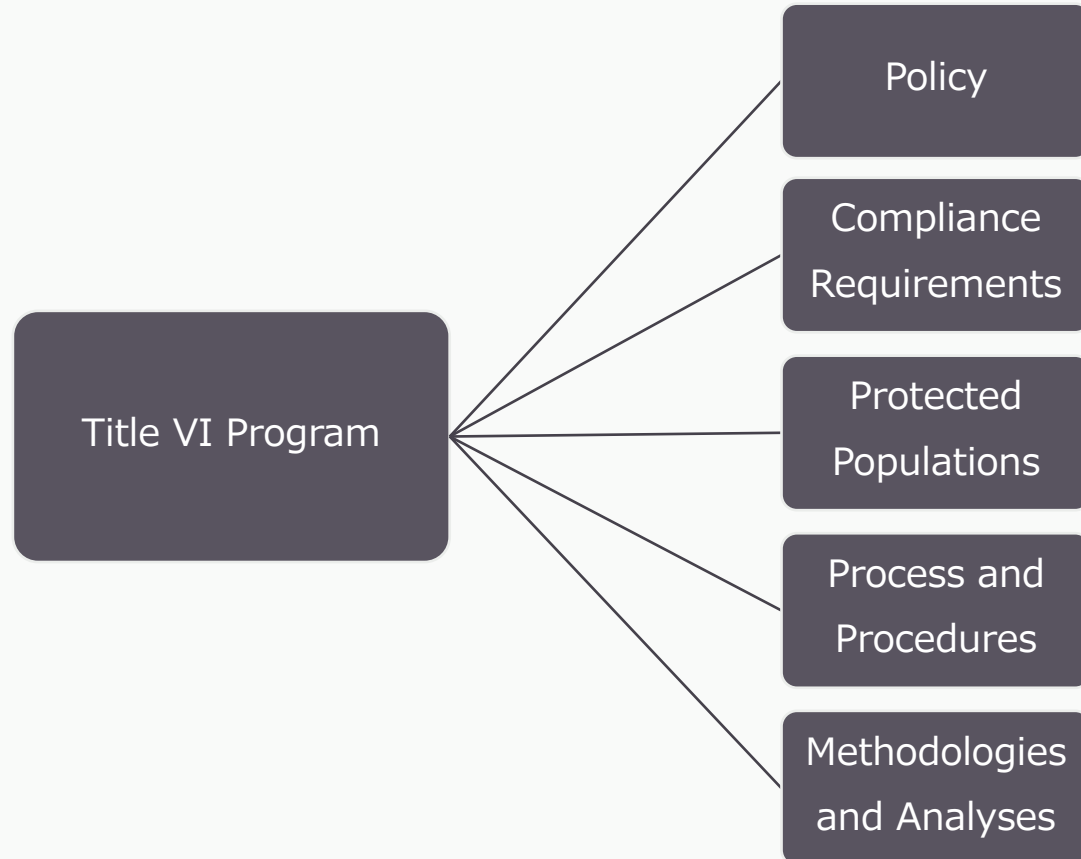


CMMPO TITLE VI PROGRAM

CMMPO Meeting
July 17, 2024



Purpose



CMMPO'S Transportation EQUITY Goal:

ENSURE THAT ALL PEOPLE IN THE CENTRAL MASSACHUSETTS REGION RECEIVE COMPARABLE BENEFITS FROM, AND ARE NOT DISPROPORTIONATELY BURDENED BY, CMMPO INVESTMENTS, REGARDLESS OF RACE, COLOR, NATIONAL ORIGIN, AGE, INCOME, ABILITY, SEX OR GENDER.



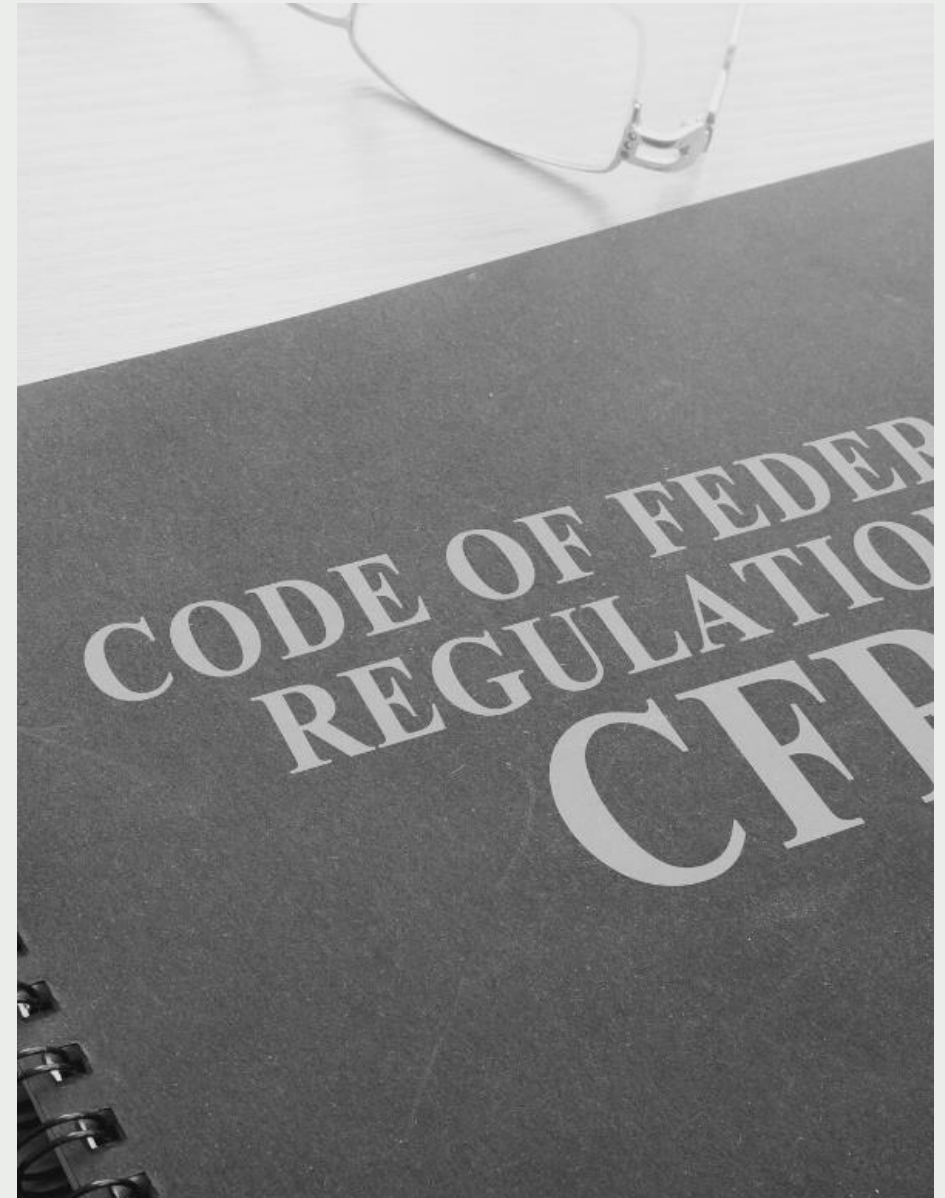


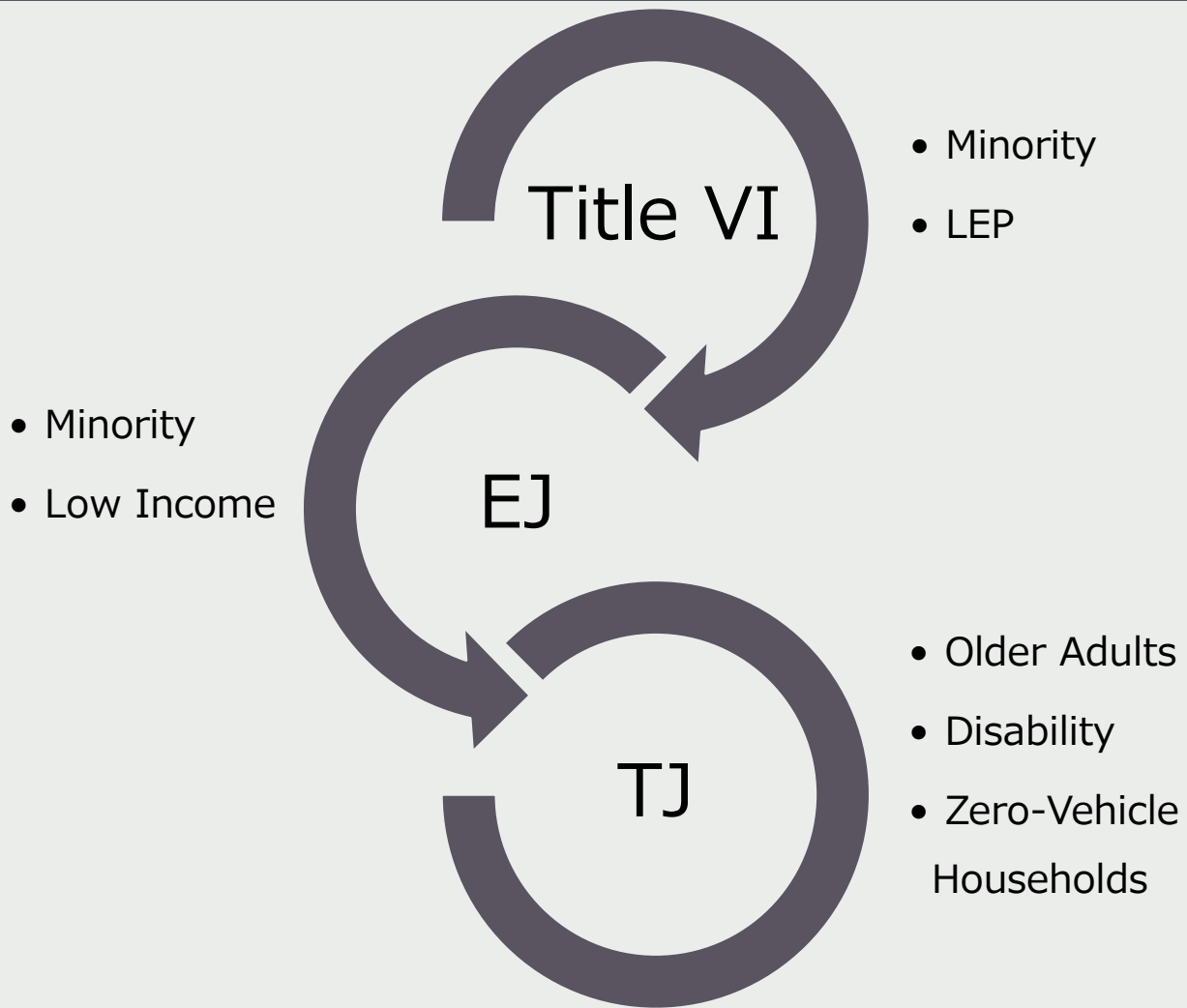
Objectives

- Prioritize CMMPO investments that benefit equity populations.
- Minimize potential harmful environmental, health, and safety effects of CMMPO-funded projects for all equity populations.
- Promote investments that support transportation for all ages.
- Promote investments that are accessible to all people regardless of ability.

Requirements and Compliance

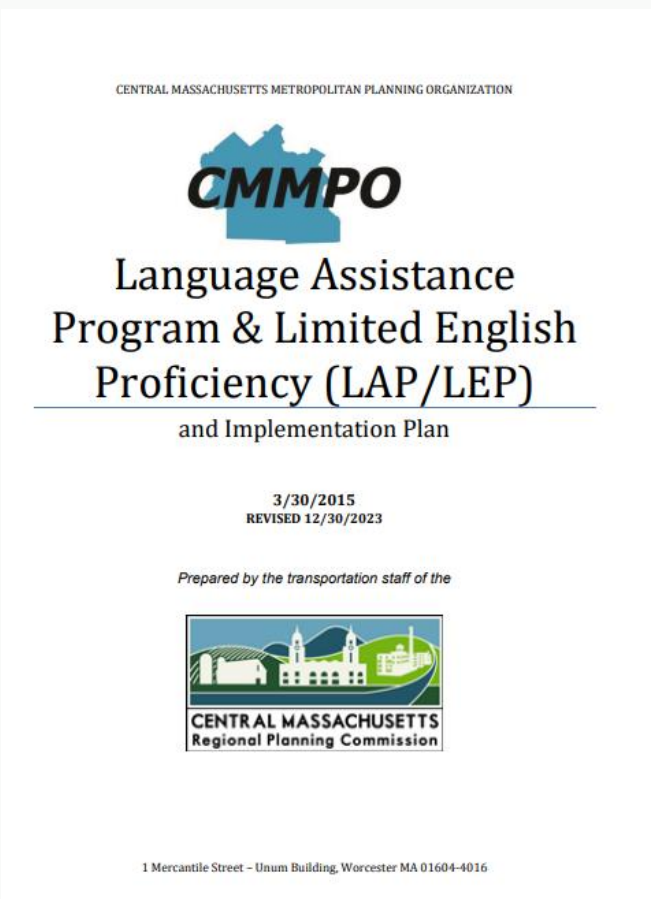
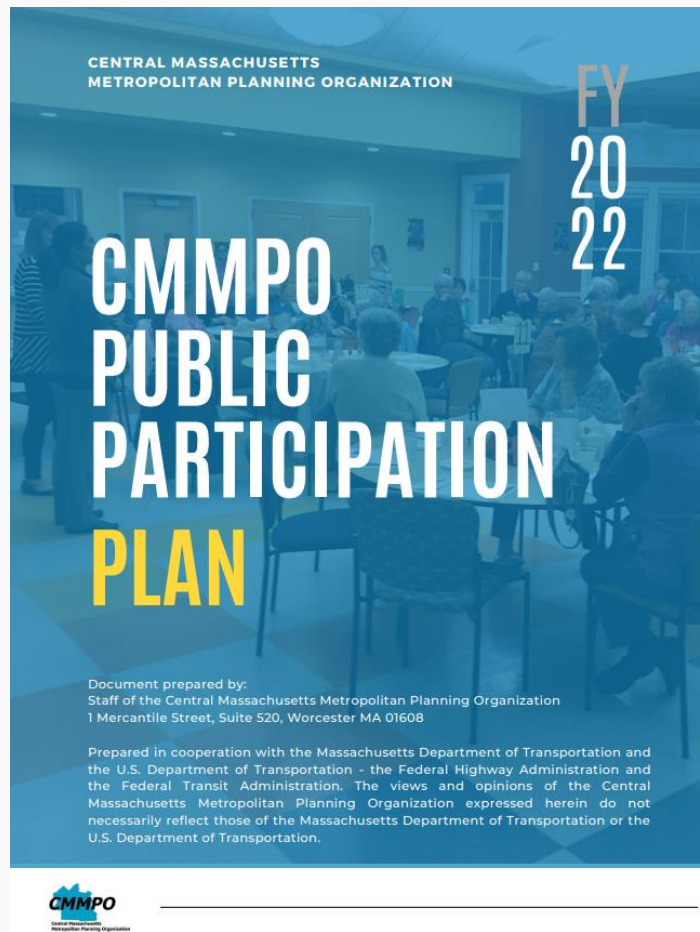
- ❑ Federal guidance
- ❑ General reporting requirements
- ❑ Training
- ❑ Staffing
- ❑ Review procedures
- ❑ Subrecipient monitoring





Protected Populations

- Adoption of MassDOT's REJ+ thresholds for the Central Massachusetts region
- Socio-Demographic data
- Mapping applications



Procedures endorsed by the CMMPO

Methodologies & Analyses

Equity Analysis included in certification documents

- Geographic Equity
- Locational Analysis
- Benefits and Burdens Analysis
 - Scenario Planning
 - TIP Investments
 - UPWP Technical Assistance & Studies

Benefits and Burdens Analysis

“an evaluation comparing impacts likely to be experienced by EJ populations against those likely to be experienced by non-EJ populations and the community as a whole in order to address any disproportionate benefits or burdens between EJ populations and the population at large.” (FTA C 4703.1, August 15, 2012)

Next Steps

- Release the Title VI Program for Public Comment & Review
- Title VI Program Quick Guide
- Translated versions
- Hybrid Public Meeting: August 13, 2024, 12PM
- Approval by the CMMPO

THANK YOU

WWW.CMRPC.ORG