



# CMMPO TITLE VI PROGRAM

Public Meeting  
August 28, 2024

MassDOT Conference Room  
499 Plantation Parkway,  
Worcester MA, 01605

# Agenda



Welcome &  
Introductions



About the CMMPO



What is Title VI?



Purpose of the CMMPO  
Title VI Program



Components of the  
Program



Discussion & Questions

# What is an MPO?



**Federally mandated in the 1970's for transportation planning in major U.S. metro areas**

Consortium of:

- Governmental bodies
- Transit authorities
- Planning agencies
- Local elected officials

Over 400 in the United States and 10 in Massachusetts

# What is the CMMPO's role?



MPO regions receive federal funding and provide planning for transportation projects:

- Highways
- Bridges
- Transit
- Trails
- Bicycle and Pedestrian

## WHAT IS TITLE VI?

This statute of the Civil Rights Act of 1964 provides that **NO PERSON** in the United States shall, on the grounds of **RACE, COLOR OR NATIONAL ORIGIN**, be excluded from participation in, be denied the benefits of, or be otherwise subjected to discrimination under any program or activity receiving Federal financial assistance.

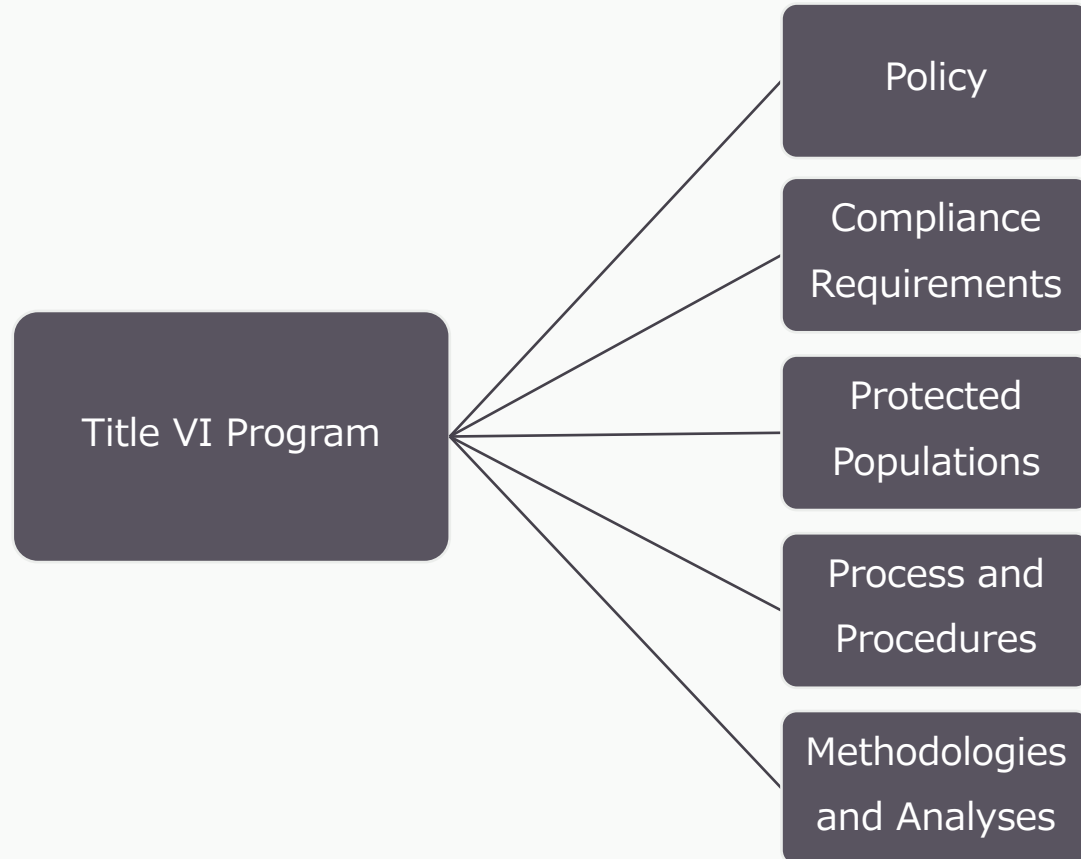




# Federal Compliance Requirements Beyond Title VI

- Limited English Proficiency (LEP)
- Environmental Justice
- Americans with Disabilities Act
- Racial Equity

# Purpose



**CMMPO'S Transportation EQUITY Goal:**

***ENSURE THAT ALL PEOPLE IN THE CENTRAL MASSACHUSETTS REGION RECEIVE COMPARABLE BENEFITS FROM, AND ARE NOT DISPROPORTIONATELY BURDENED BY, CMMPO INVESTMENTS, REGARDLESS OF RACE, COLOR, NATIONAL ORIGIN, AGE, INCOME, ABILITY, SEX OR GENDER.***



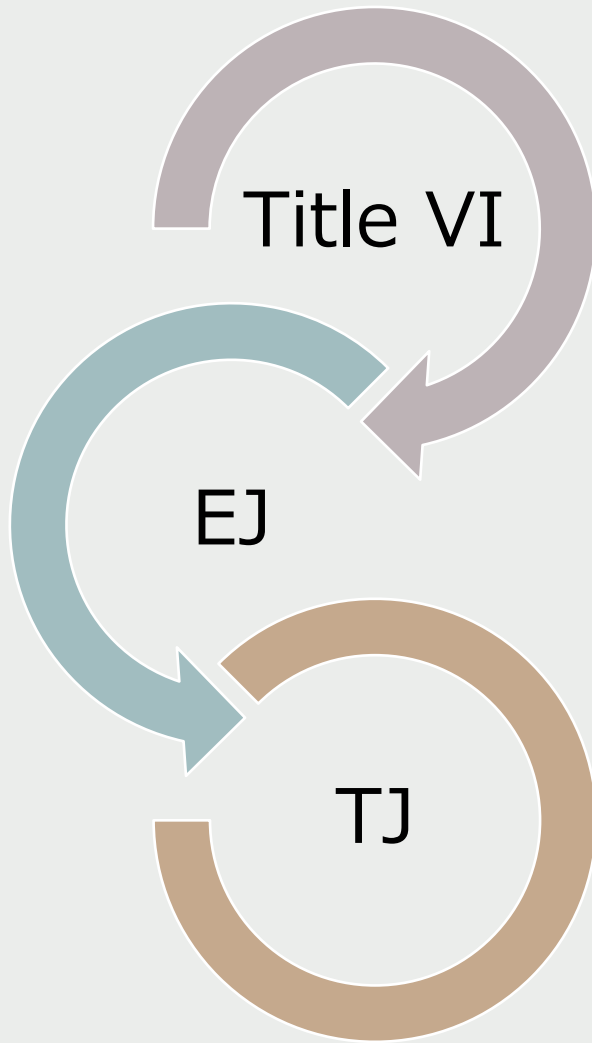




# Objectives

- ❑ **Prioritize** CMMPO investments that benefit protected populations.
- ❑ **Minimize** potential harmful environmental, health, and safety effects of CMMPO-funded projects for all protected populations.
- ❑ **Promote** investments that support transportation for all ages and are accessible to all people regardless of ability.

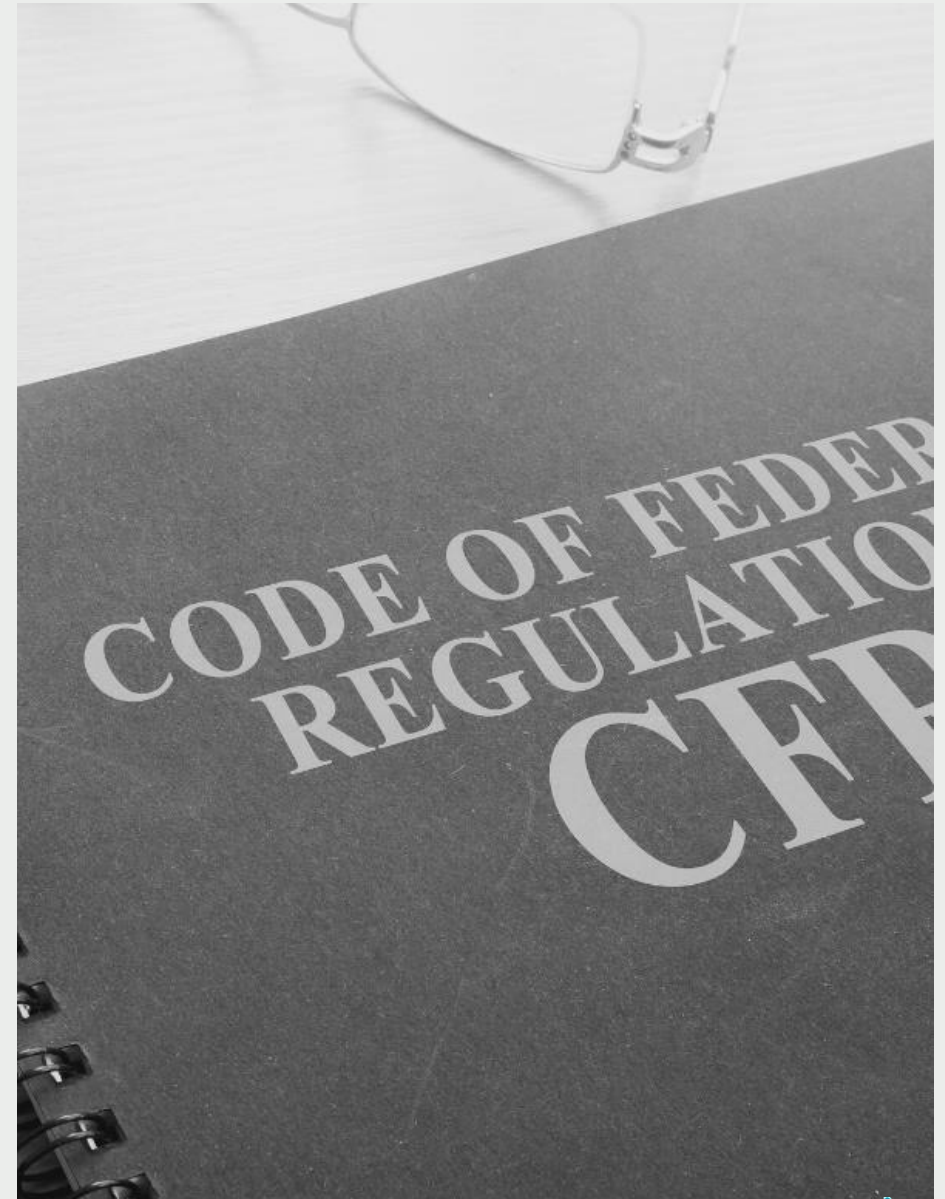
# Protected Populations

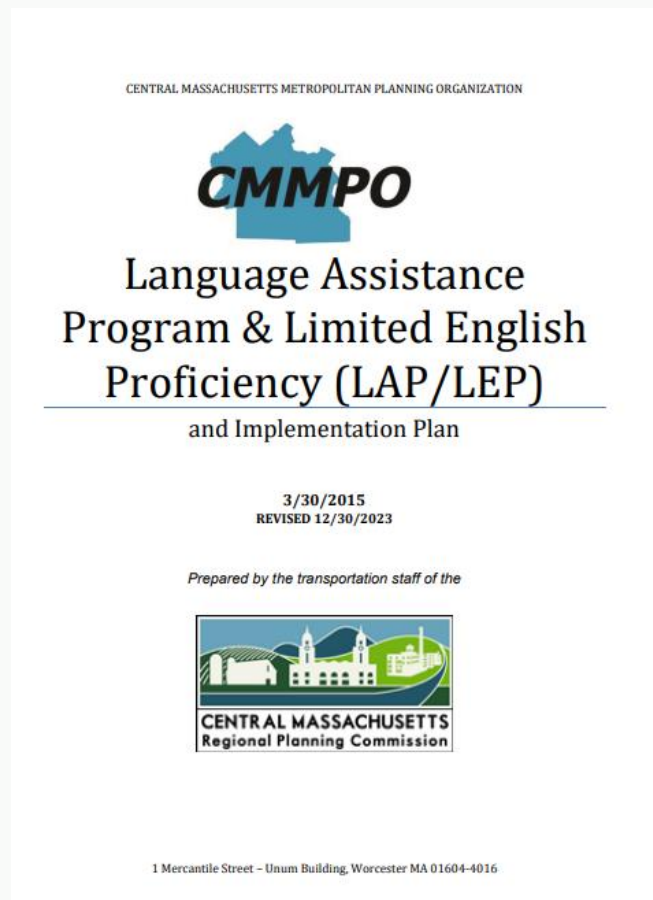
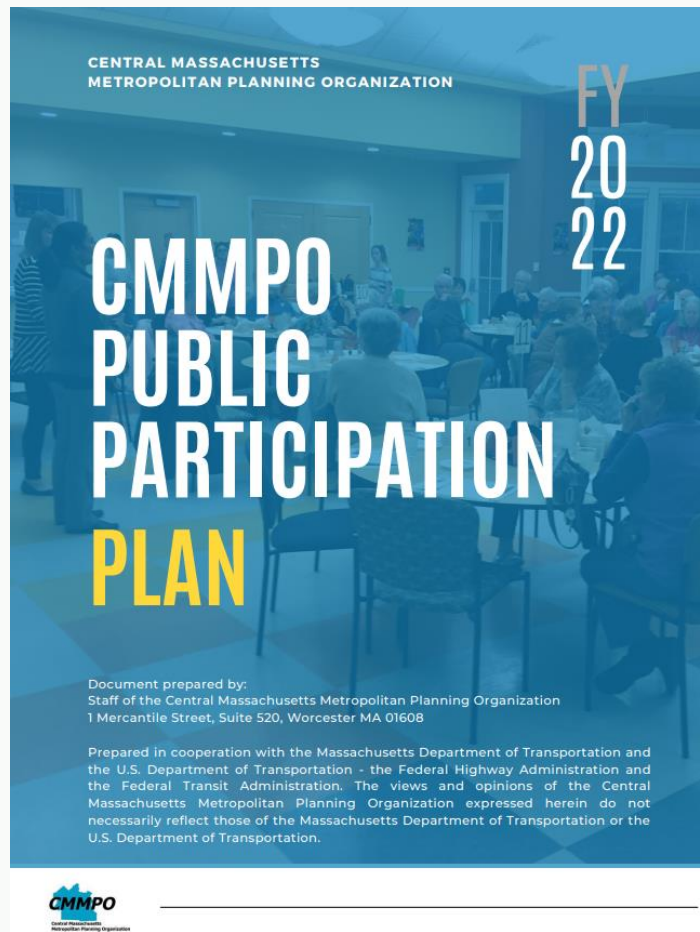


- Minority
- Limited English Proficient
- Minority
- Low Income
- Older Adults
- Disability
- Zero-Vehicle Households

# Requirements and Compliance

- ❑ Federal guidance
- ❑ General reporting requirements
- ❑ Training
- ❑ Staffing
- ❑ Review procedures
- ❑ Subrecipient monitoring





# Procedures endorsed by the CMMPO

# Methodologies & Analyses

Equity Analysis included in certification documents

- Geographic Equity
- Locational Analysis
- Benefits and Burdens Analysis
  - Scenario Planning
  - TIP Investments
  - UPWP Technical Assistance & Studies

# Methodologies & Analyses

## Benefits and Burdens Analysis

“an evaluation comparing impacts likely to be experienced by EJ populations against those likely to be experienced by non-EJ populations and the community as a whole in order to address any disproportionate benefits or burdens between EJ populations and the population at large.” (FTA C 4703.1, August 15, 2012)

# EXAMPLE

## 2025-2029 Transportation Improvement Program Federally Funded Projects Using Target Authority

TIP Year	Highway Projects Using Federal Target \$\$		Projects Located in Municipalities with Environmental Justice Neighborhoods		Projects Located in Environmental Justice Neighborhoods		EJ % of Total Federal Target \$\$
	#	\$\$	#	\$\$	#	\$\$	
	(in millions)		(in millions)		(in millions)		
2025	5	24.719	5	24.719	2	13.279	53.7%
2026	3	14.026	1	5.703	1	5.703	40.7%
2027	4	25.327	3	15.425	2	10.959	43.3%
2028	3	24.611	2	21.235	1	9.564	38.9%
2029	3	31.253	3	31.253	3	31.253	100.0%
<b>Total</b>	<b>18</b>	<b>119.936</b>	<b>14</b>	<b>98.335</b>	<b>9</b>	<b>70.758</b>	<b>59.0%</b>

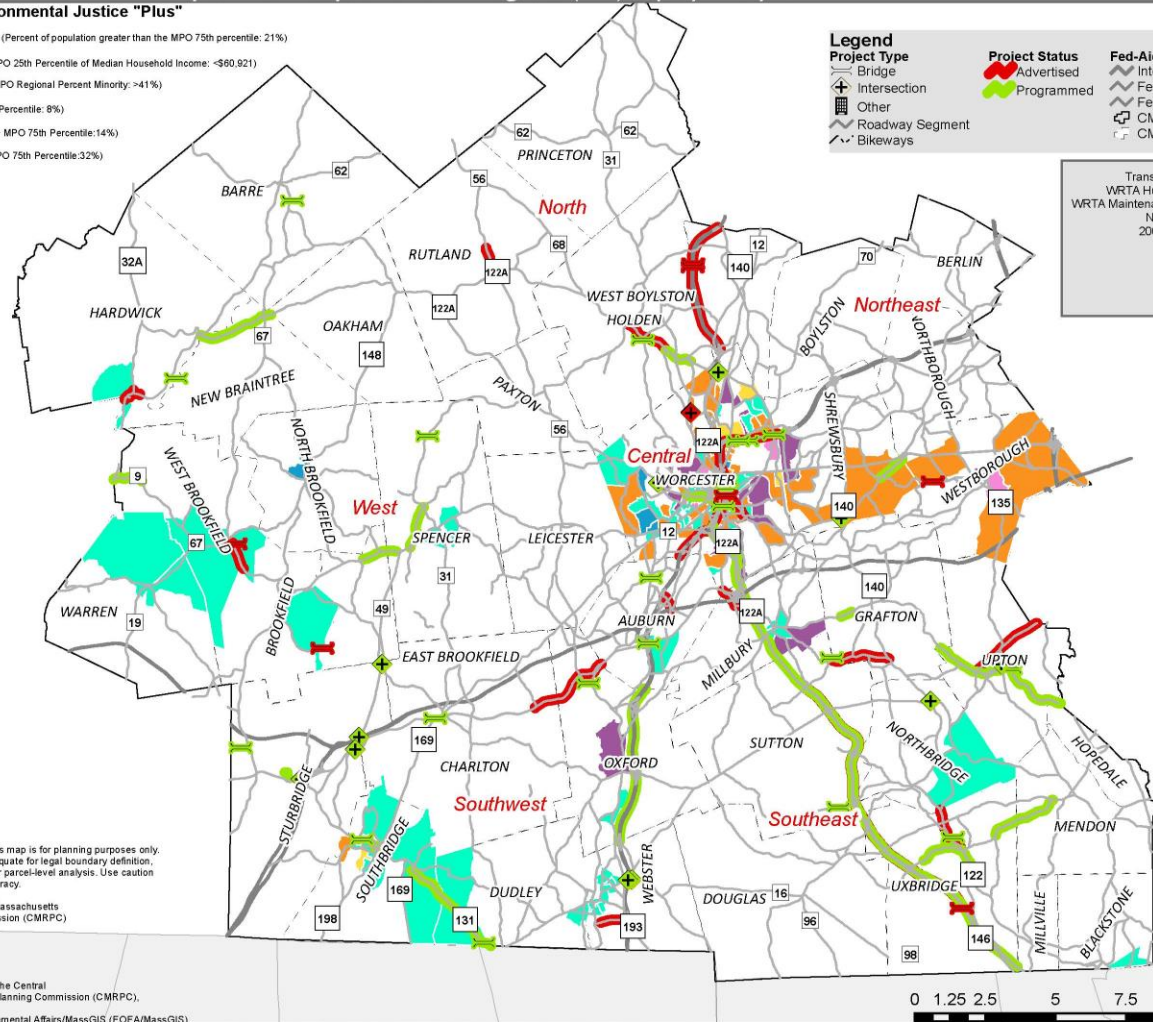
# 2019 - 2028 CMMPO Transportation Improvement Program (TIP) Equity Analysis

## Regional Environmental Justice "Plus"

- Population over 65 (Percent of population greater than the MPO 75th percentile: 21%)
- Low Income (< MPO 25th Percentile of Median Household Income: <\$60,921)
- Minority (> 75th MPO Regional Percent Minority: >41%)
- LEP (> MPO 75th Percentile: 8%)
- Zero Vehicle HH (> MPO 75th Percentile: 14%)
- Disability HH (> MPO 75th Percentile: 32%)

- |   |  |   |
|---|--|---|
| <b>Legend</b>   | <b>Project Status</b>  | <b>Fed-Aid Eligible Road</b>  |
| <ul style="list-style-type: none"> <li> Bridge</li> <li> Intersection</li> <li> Other</li> <li> Roadway Segment</li> <li> Bikeways</li> </ul> | <ul style="list-style-type: none"> <li> Advertised</li> <li> Programmed</li> </ul> | <ul style="list-style-type: none"> <li> Interstate Highway</li> <li> Fed-Aid Eligible Collector</li> <li> Fed-Aid Eligible Arterial</li> <li> CMMPO Boundary</li> <li> CMRPC Towns</li> </ul> |

Transit TIP Projects	
WRTA Hub Complex:	2012
WRTA Maintenance & Operations:	2014
New Buses:	
2008-2023:	72
2024:	8
2025:	7
2026:	3
2027:	0
2028:	0



Information depicted on this map is for planning purposes only. This information is not adequate for legal boundary definition, regulatory interpretation, or parcel-level analysis. Use caution interpreting positional accuracy.

Produced by the Central Massachusetts Regional Planning Commission (CMRPC)  
 1 Mercantile St. Ste. 520  
 Worcester, MA 01608  
<http://www.cmrpc.org/gis>

Source: Data provided by the Central Massachusetts Regional Planning Commission (CMRPC), Mass DOT and the Executive Office of Environmental Affairs/MassGIS (EOEA/MassGIS)



Document Path: K:\1.3 Transportation Improvement Program\2019-2028 CMMPO TIP Map Regional Equity Map.mxd

# EXAMPLE





# DISCUSSION

## FOR MORE INFORMATION:

Visit:

[www.cmrpc.org/transportation/titlevi](http://www.cmrpc.org/transportation/titlevi)

or scan the QR code below



# THANK YOU

For more information, questions or printed copies of the CMMPO Title VI Program contact:

Contact: Stephanie Toupin

[TitleVICoordinator@cmrpc.org](mailto:TitleVICoordinator@cmrpc.org)

1 Mercantile Street, Suite 520

Worcester, MA 01608

[www.cmrpc.org](http://www.cmrpc.org)