

CMMPO Regional Bicycle Plan: 2025 Update

Adam Wriggins

October 2025



Overview

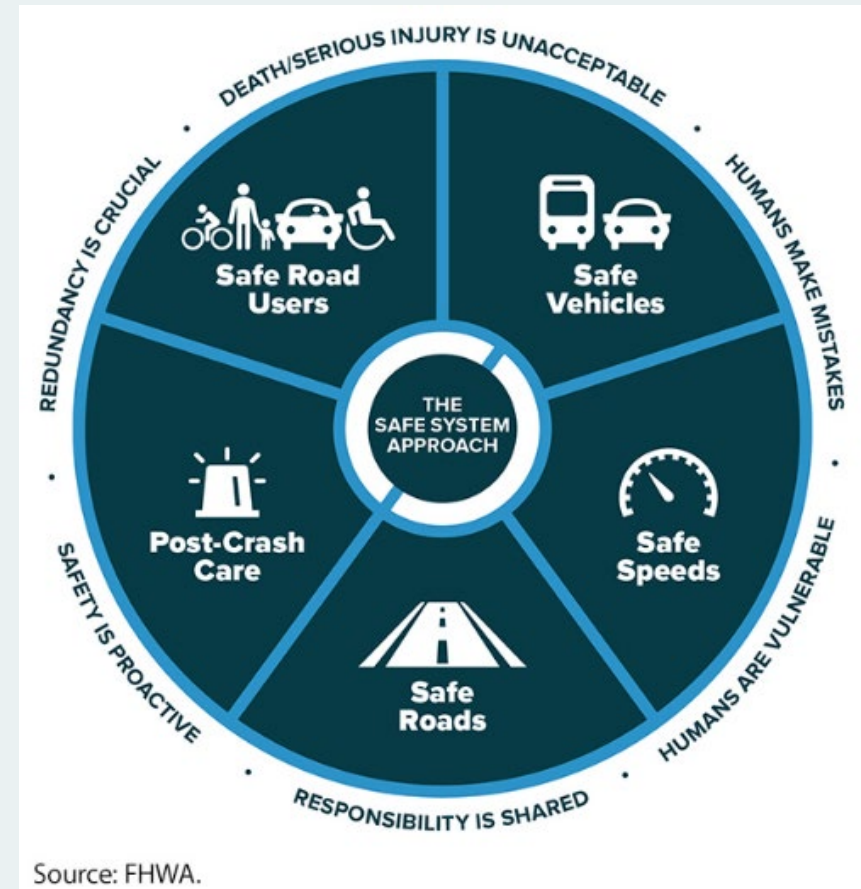
- Introduction
- History & Context
- Goals
- Tasks
- Community Engagement
- Analysis & Results



Blackstone River Bikeway

Introduction

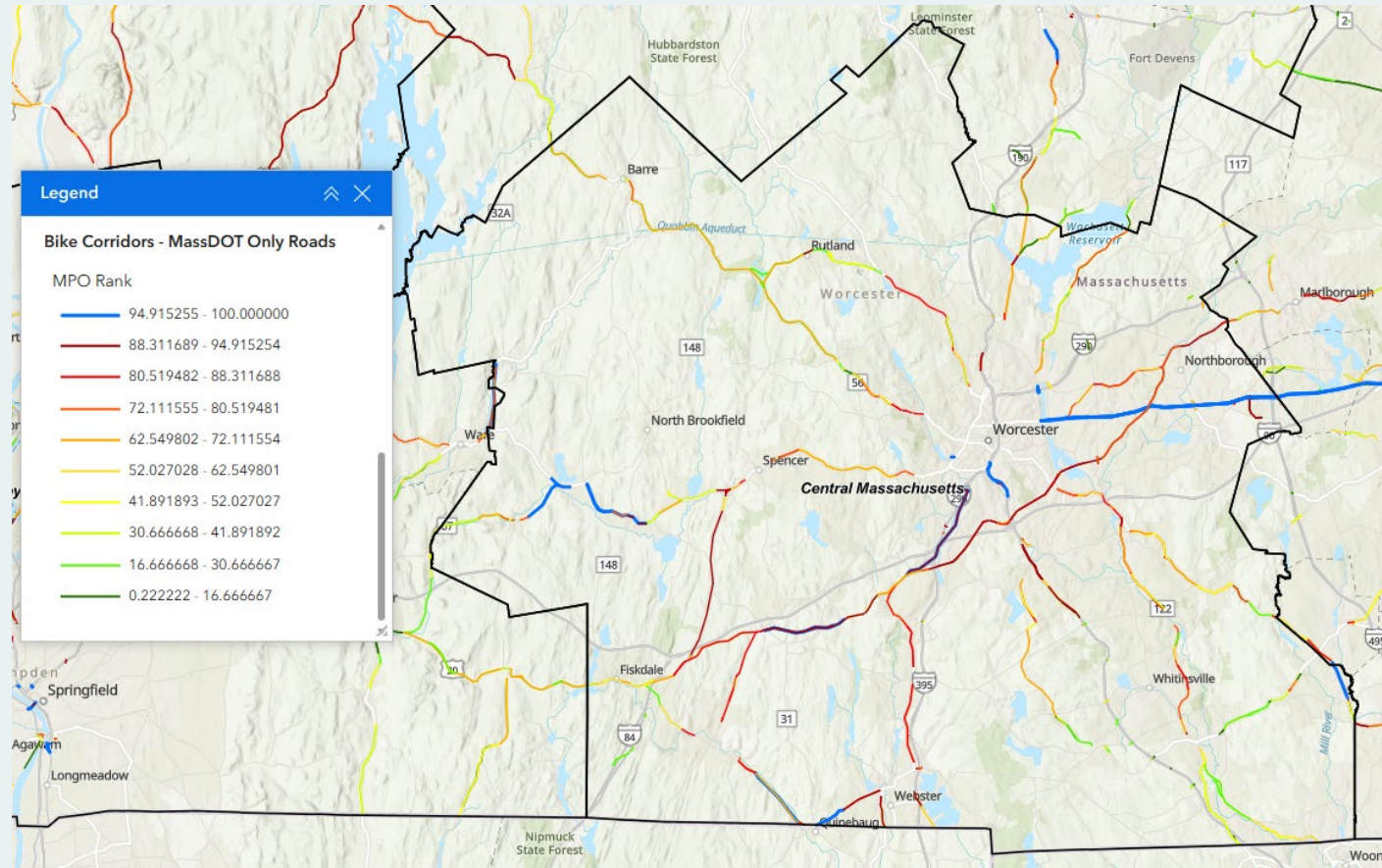
- What is a Regional Bicycle Plan?
- Benefits of Bicycling
 - Health
 - Safety
 - Economy
 - Livability
 - Environmental
- Policy shift toward all users
 - Vision Zero
 - Safe Systems Approach



Safe Systems Approach Framework

History & Context

- 2018 CMMPO Regional Bicycle Plan
- 2021 CMMPO Bicycle Compatibility Index (BCI)
- 2019 MassDOT Bicycle Transportation Plan
- 2025 MassDOT Next Gen Ped and Bike Vision Map
- Complete Streets Program



2025 MassDOT Next Generation Bicycle Vision Map Priorities

Goals

1. To continue the development of a safe regional bicycle network that encourages mode shift
2. To identify a prioritized list of potential improvements
3. To support member communities in the implementation of bicycle projects while addressing connectivity gaps in the regional network



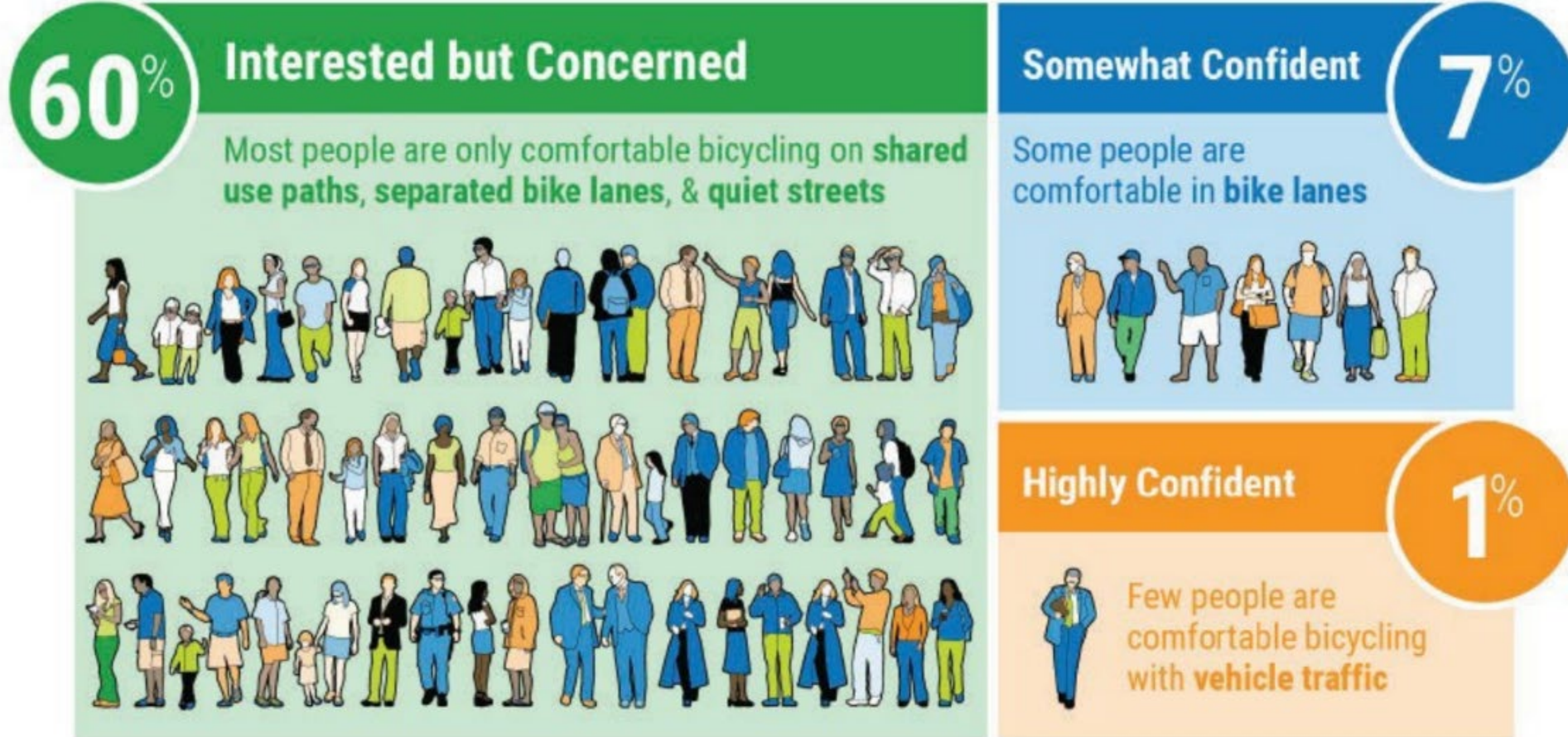
Water Street, Worcester

Tasks

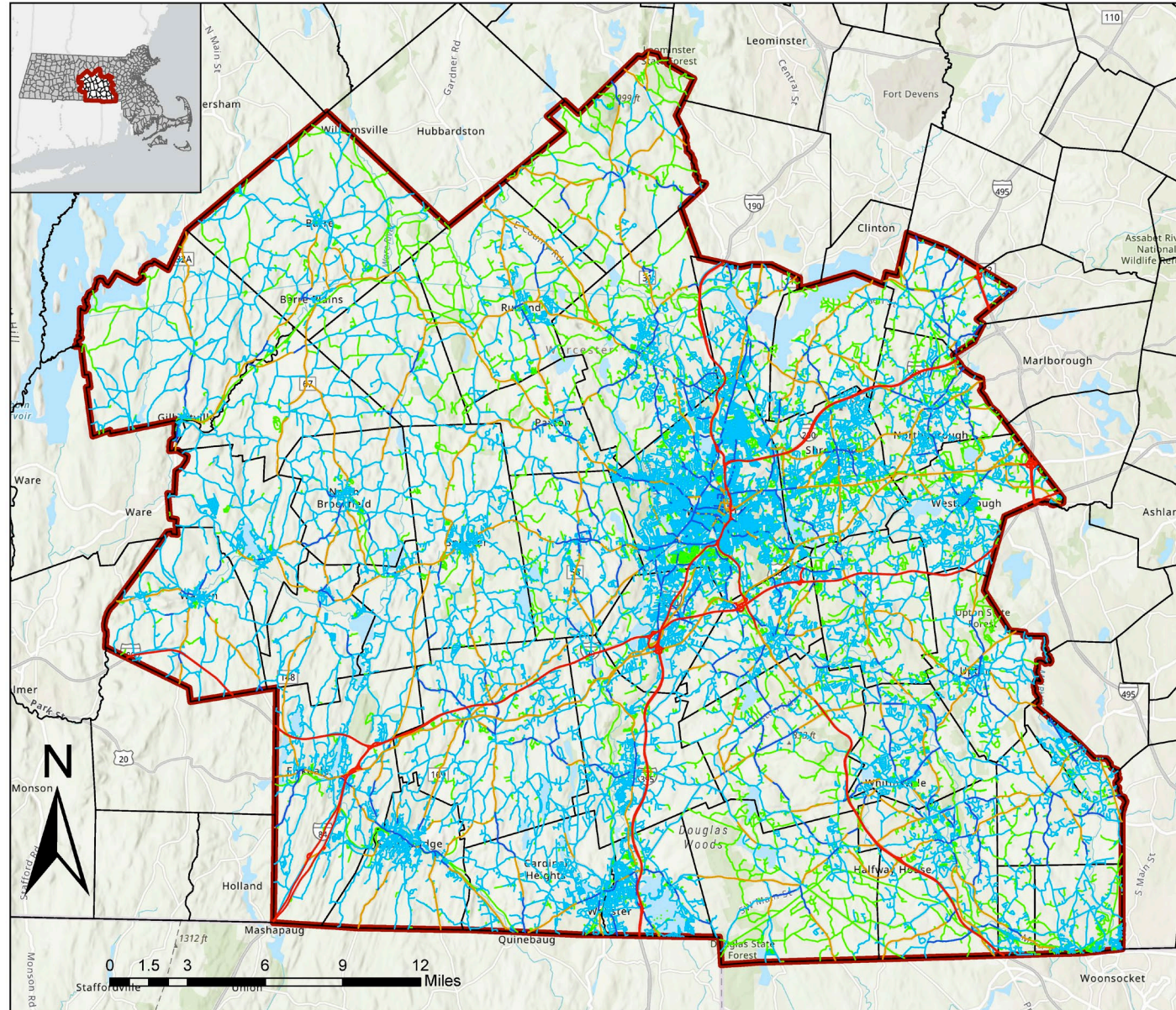
- Outreach & Community Engagement
 - Interactive Map/Survey
 - Formation of Bicycle Plan Advisory Committee
 - Subregional meetings with Municipal Staff
 - Stakeholder meetings (Worcester Bike Summit, 7 Hills Wheelmen Annual Meeting, MassBike Annual Meeting)
- Data collection, assembly, analysis
 - Bicycle Level of Traffic Stress (LTS) from MassDOT
- Conduct Access to Destinations Analysis
 - Schools, food stores, libraries, town halls
 - Travelsheds
- Conduct Safety Analysis
 - Crash locations, risk-based screening, MassDOT VRU Assessment

Understanding the Bicycle User Types

Biking must be **safe**, **comfortable**, and **convenient** to appeal to a broad range of people



Bicycle Level of Traffic Stress (LTS)



Bicycle Level of Traffic Stress (LTS): CMMPO Region

Legend

Level of Traffic Stress (LTS) Rating

- 1 Low Stress: Families and Children
- 2 Low-Medium Stress: Interested But Concerned
- 3 Medium-High Stress: Enthusiastic & Confident
- 4 High Stress: Strong & Fearless
- 5 Bicycling Prohibited

CMRPC Towns

CMRPC Outline

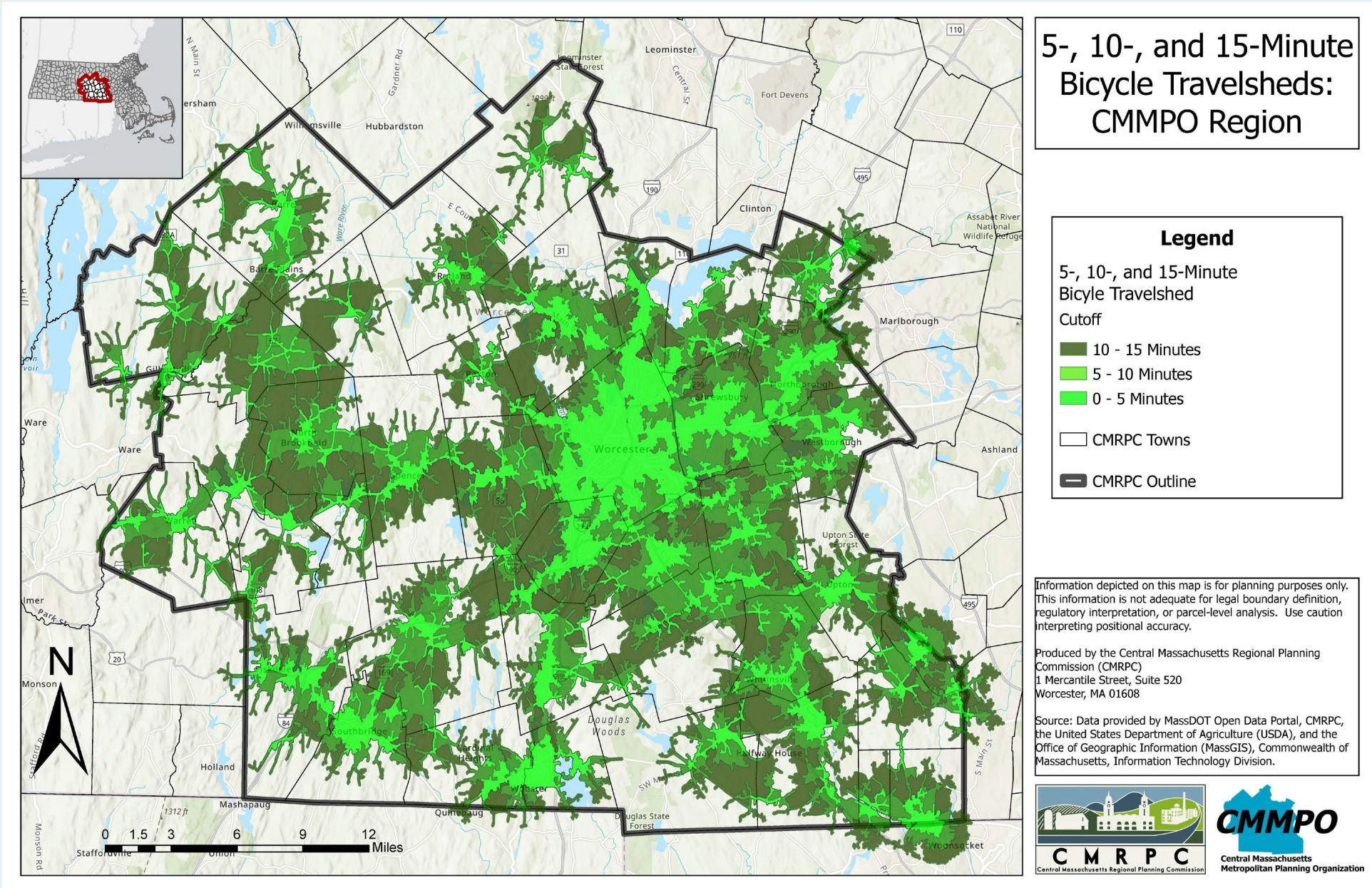
Information depicted on this map is for planning purposes only. This information is not adequate for legal boundary definition, regulatory interpretation, or parcel-level analysis. Use caution interpreting positional accuracy.

Produced by the Central Massachusetts Regional Planning Commission (CMRPC)
1 Mercantile Street, Suite 520
Worcester, MA 01608

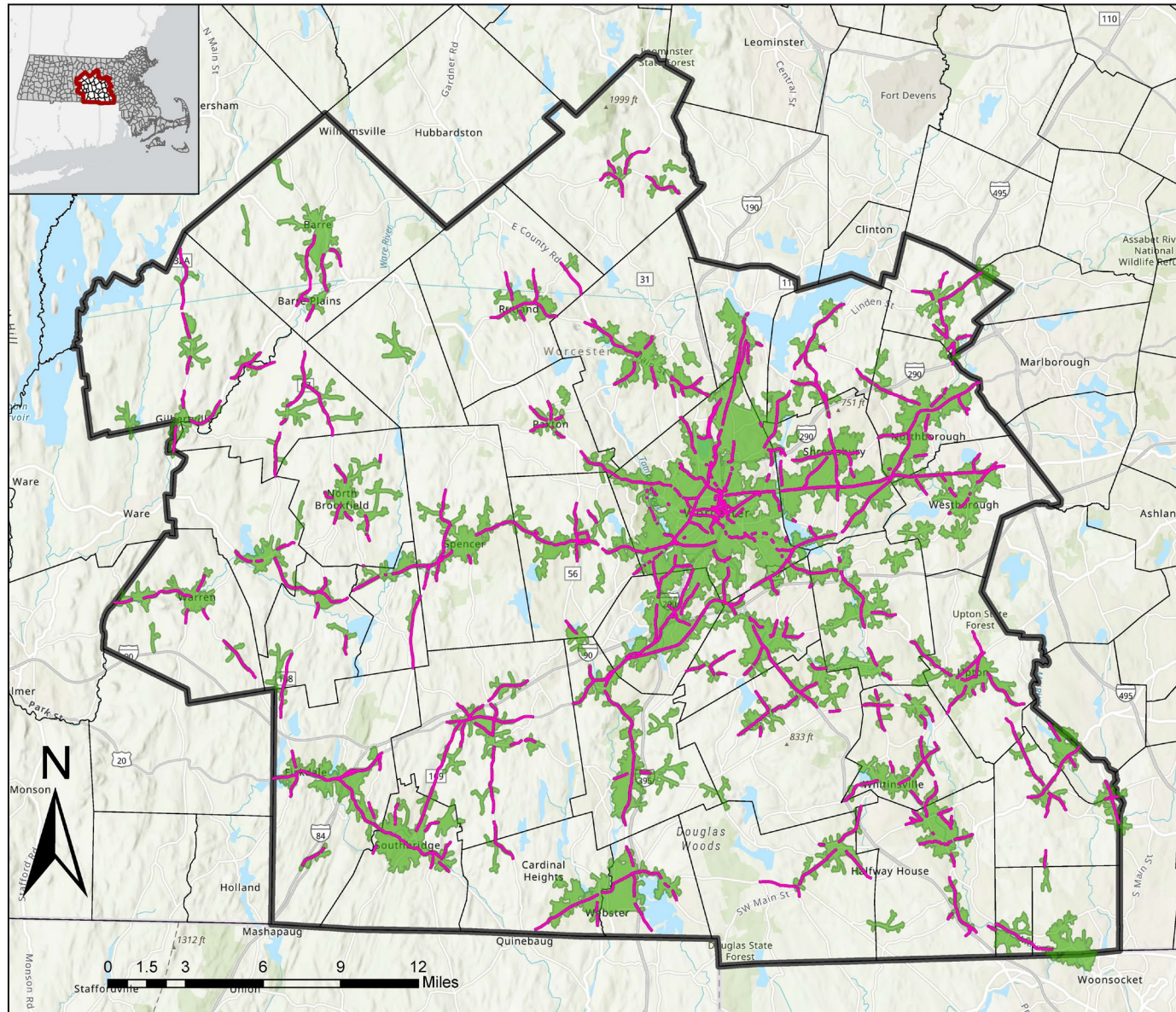
Source: Data provided by MassDOT Open Data Portal, CMRPC, the United States Department of Agriculture (USDA), and the Office of Geographic Information (MassGIS), Commonwealth of Massachusetts, Information Technology Division.



Access to Destinations Analysis: Travelsheds



Access to Destinations Analysis: Priority Identification



High Stress Bicycle Segments Intersecting 5-Minute Travelsheds: CMMPO Region

Legend

High Stress Segments
Intersecting 5-Minute Travelsheds

5-Minute Bicycle Travelshed
Cutoff

0 - 5 Minutes

CMRPC Towns

CMRPC Outline

Information depicted on this map is for planning purposes only. This information is not adequate for legal boundary definition, regulatory interpretation, or parcel-level analysis. Use caution interpreting positional accuracy.

Produced by the Central Massachusetts Regional Planning Commission (CMRPC)
1 Mercantile Street, Suite 520
Worcester, MA 01608

Source: Data provided by MassDOT Open Data Portal, CMRPC, the United States Department of Agriculture (USDA), and the Office of Geographic Information (MassGIS), Commonwealth of Massachusetts, Information Technology Division.



Prioritization Scoring Rubric

Safety (40%)

- Crash-based Analysis
- Risk-based Analysis
- MassDOT VRU Assessment

Access & Comfort (30%)

- Bicycle Level of Traffic Stress (LTS) Rating
- Number of Bicycle Trip Origins

Public Participation (10%)

- Interactive Map/Survey
- Other Local Survey

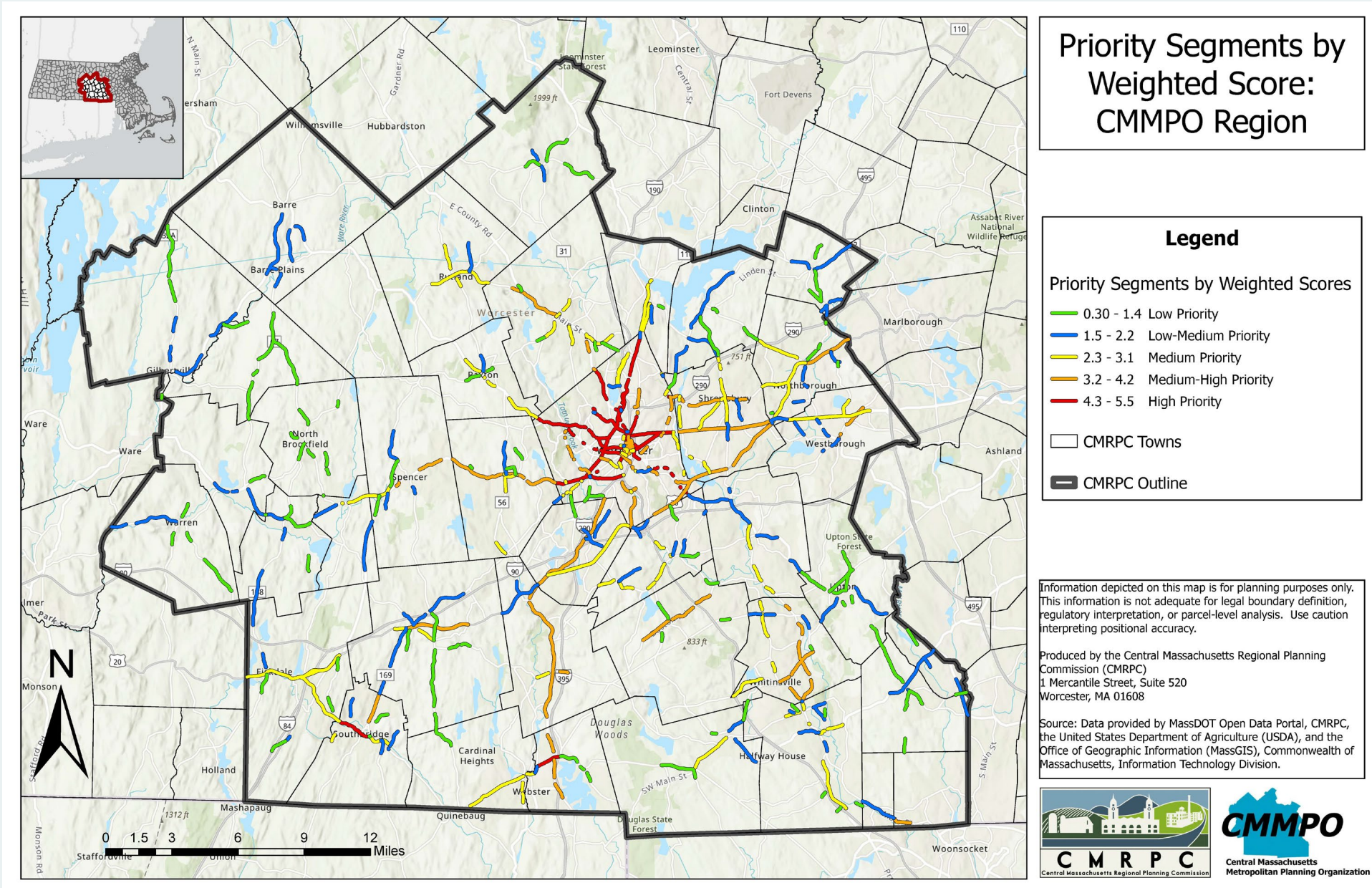
Local, Regional, State Priorities (10%)

- Local Priority
- Regional Priority
- State Priority

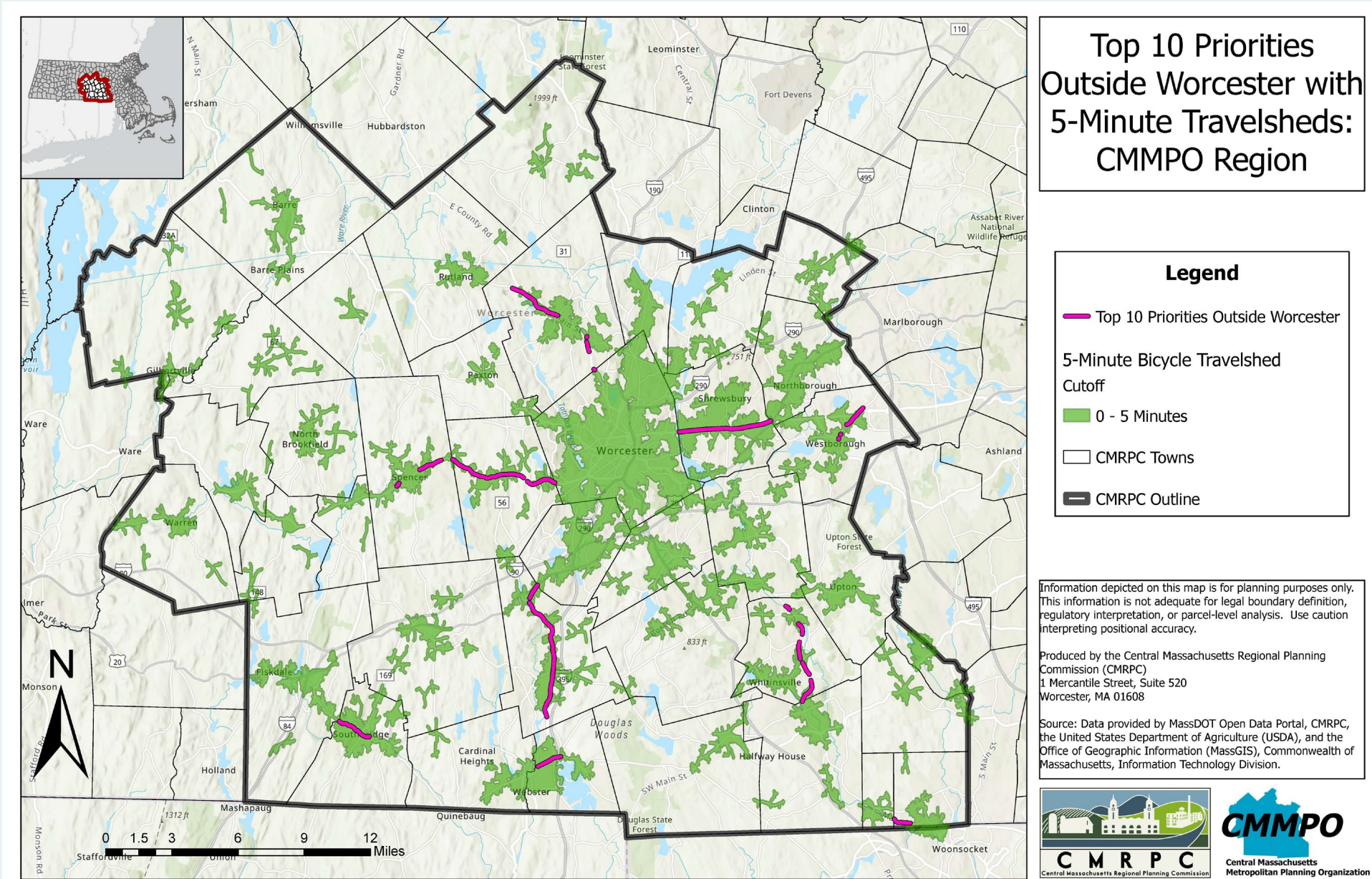
Socioeconomic & Demographic (10%)

- Population
- REJ+ Determination

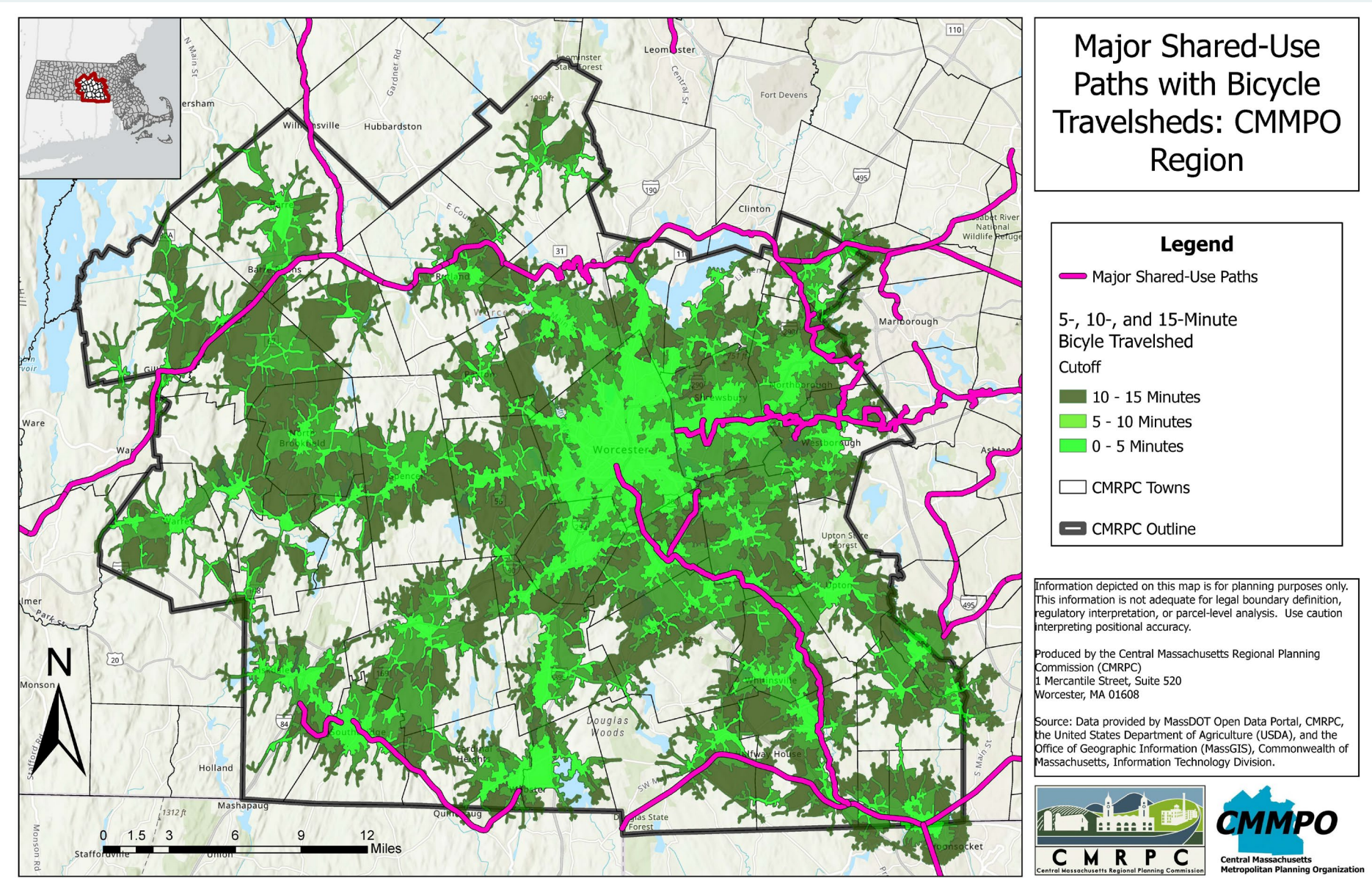
Results: Priorities by Weighted Score



Results: Top 10 Priorities Outside Worcester



Off-Road Regional Network Important Too!



Thank you



Questions?

Adam Wriggins

awriggins@cmrpc.org

www.cmrpc.org